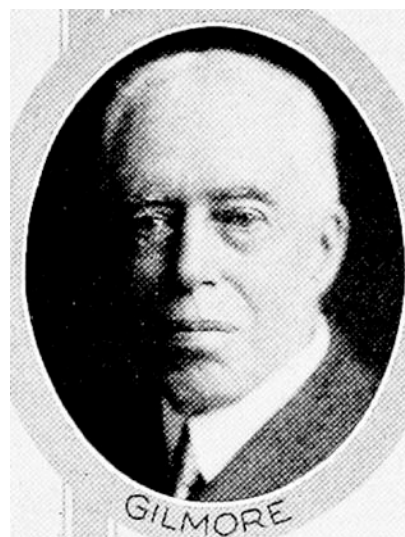


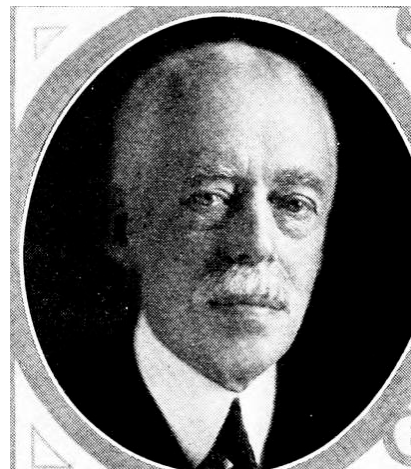
WM. T. GILMORE.—Representative from Cedar county, was born in Bellefontaine, Ohio. He was graduated from Iowa State College. Taught country school two terms; afterward engaged in the clothing business for some years. Is president of the Cedar County State Bank. Is a member of the Knights of Pythias, Consistory, Mystic Shrine, state historical society and the farm bureau. Served on the city council five years and was an alternate to the republican national convention in 1920. Member of the Iowa house since 1917 with the exception of 1925. Republican in politics.



WM. T. GILMORE.—Representative from Cedar county, was born in Bellefontaine, Ohio. He was graduated from Iowa State College. Taught country school for two terms; afterward engaged in the clothing business for some years. Is president of the Cedar County State Bank. Is a member of the Knights of Pythias, Consistory, Mystic Shrine, State historical society and the farm bureau. Served on the city council for five years and was an alternate to the republican national convention in 1920. Elected representative in 1920, re-elected in 1922 and in 1926. Republican in politics.



WM. T. GILMORE.—Representative from Cedar county, was born in Bellefontaine, Ohio. He was graduated from Iowa State college. Taught country school for two terms; afterward engaged in the clothing business for some years. Is now connected with the Cedar county state bank as vice president. Is a member of the Knights of Pythias, Consistory, Mystic Shrine, State Historical society and the farm bureau. Served on the city council for five years and was an alternate to the republican national convention in 1920. Elected representative in 1920, reelected in 1922 and in 1926. Republican in politics.



WM. T. GILMORE.—Representative from Cedar county, was born in Bellefontaine, O. When six weeks old he moved with his parents to Tipton, Iowa. He was graduated from Iowa state college. Taught country school for two terms; afterward engaged in the clothing business for some years. Is now connected with the Cedar county state bank as vice president. Is also interested in several other banks and is secretary and stock holder of the Tipton Canning company. Is a member of the Knights of Pythias, Consistory, Mystic Shrine, State Historical society and the farm bureau. Is vice president of the Cedar county Red Cross and director of the Tipton Community club. Served on the city council for five years and was an alternate to the republican national convention in 1920. Elected representative in 1920, and re-elected in 1922. Republican in politics.



WM. T. GILMORE

Representative from Cedar county, was born in Bellefontaine, Ohio. When six weeks old he moved with his parents to Tipton, Iowa. He was graduated from the Iowa State college. Taught country school for two terms; afterward entered the clothing business in which he remained for some years. Is now connected with the Cedar County State Bank as vice president. Is also interested in several other banks and is secretary and stock holder of the Tipton Canning Company. Is a member of the Knights of Pythias, Consistory, Mystic Shrine and State Historical Society and a member of the Farm Bureau. Is vice president of the Cedar County Red Cross and director of the Tipton Community club. Served on the city council for five years and was an alternate to the republican National Convention in 1920. Elected representative in 1920. Republican in politics.