



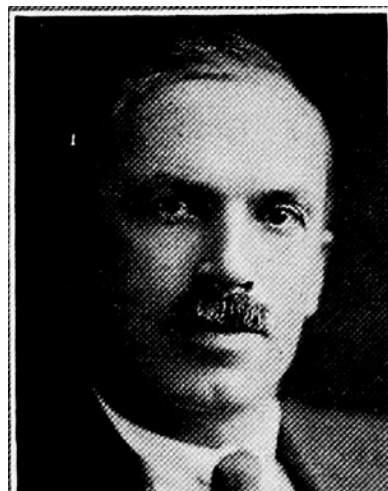
CLYDE H. TOPPING, Burlington.—Senator from the ninth district, Des Moines county, was born on a ranch near Utica, Ness county, Kansas, January 8, 1884. His parents, John W. Topping and Ida (nee Johnston) Topping, were born in Van Buren county, Iowa. In the year 1888 the family returned to Iowa, and moved to Burlington in 1896. Attended the public schools in Burlington, then the State University of Iowa, leaving there in 1906 for Regina, Saskatchewan, Canada, where he and his father operated a ranch in connection with a colonization project of theirs. Was married in 1908 to Miss Helen Welsh Young, of Burlington, daughter of Dr. and Mrs. H. B. Young. They have three children, Alice Hamilton, Eugenia Young, and Clyde Hamilton, Jr. After the disposal of the Canadian ranch, he entered the employ of the Canadian Pacific railway, and was connected with the land department of that railway at Calgary, Alberta, for ten years, leaving the Canadian Pacific railway to again engage in the real estate business with his father at Burlington. He is a member of the Beta Theta Pi fraternity, a member of the Rotary and Elks clubs, and a member of the Congregational church. Elected to the senate in 1926 and re-elected in 1930. A republican.



CLYDE H. TOPPING.—Senator from ninth district, Des Moines county, was born on a ranch near Utica, Ness county, Kansas, January 8, 1884. His parents were John W. Topping and Ida (nee Johnston) Topping, both of whom were born in Van Buren county, Iowa. In the year 1888 the family returned to Iowa, and moved to Burlington in 1896. Attended the public schools in Burlington, then the State University of Iowa, leaving there in 1906 for Regina, Saskatchewan, Canada, where he and his father operated a ranch in connection with a colonization project of theirs. They had one of the first steam plows in Saskatchewan. Was married in 1908 to Miss Helen Welsh Young, of Burlington, daughter of Dr. and Mrs. H. B. Young. They have three children, Alice Hamilton, Eugenia Young, and Clyde Hamilton, Jr. After the disposal of the Canadian ranch, he entered the employ of the Canadian Pacific railway, and was connected with the land department of that railway at Calgary, Alberta, for ten years, leaving the Canadian Pacific railway to again engage in the real estate business with his father at Burlington. He was elected to the Iowa senate in 1926, and again in 1930, republican member from Des Moines county. He is a member of the Beta Theta Pi fraternity, a member of the Rotary and Elks clubs, and a member of the Congregational church.



CLYDE H. TOPPING.—Senator from ninth district, Des Moines county, was born on a ranch near Utica, Ness county, Kansas, January 8, 1884. His parents were John W. Topping and Ida (nee Johnston) Topping, both of whom were born in Van Buren county, Iowa. In the year 1888 the family returned to Van Buren county and then moved to Burlington, Iowa, in 1896. Attended the public schools in Burlington, then the State University of Iowa, leaving there in 1906 for Regina, Saskatchewan, Canada, where he and his father operated a ranch in connection with a colonization project of theirs. Was married in 1908 to Miss Helen Welsh Young, of Burlington, Iowa, daughter of Dr. and Mrs. H. B. Young. They have three children, Alice Hamilton, Eugenia Young, and Clyde H., Jr. After the disposal of the Canadian ranch he entered the employ of the Canadian Pacific Railway, and was connected with the land sales organization of that railway at Calgary, Alberta, for ten years, leaving the Canadian Pacific Railway in 1921 to again engage in the real estate business with his father at Burlington, Iowa. He was elected to the Iowa senate in 1926, republican member from Des Moines county. He is a member of the Congregational church.



CLYDE H. TOPPING.—Senator from ninth district, Des Moines county, was born on a ranch near Utica, Ness county, Kansas, January 8, 1884. His parents returned to Van Buren county, Iowa, in 1888, and then moved to Burlington in 1896. Attended grammar and high school there and went to the State University of Iowa in 1903. Left the university in 1906 and with his father operated a ranch near Regina, Saskatchewan, Canada, in connection with a colonization project of theirs. Was married in 1908 to Miss Helen Welsh Young of Burlington, Iowa, and they have three children, Alice Hamilton, Eugenia Young, and Clyde H., Jr. After the disposal of the Canadian ranch he entered the employ of the Canadian Pacific Railway, and was connected with the sales organization of the land department of that railway at Calgary, Alberta, for ten years, leaving the Canadian Pacific Railway in 1921 to again engage in the real estate business with his father at Burlington, Iowa. He was elected to the Iowa senate in 1926. Republican member from Des Moines county. He is a member of the Congregational church.