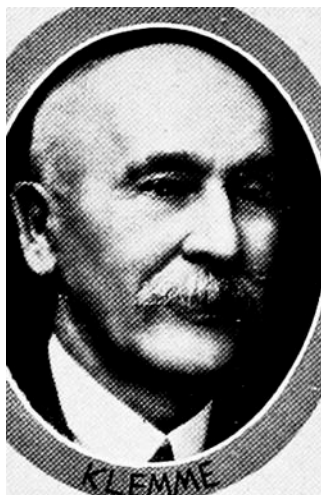
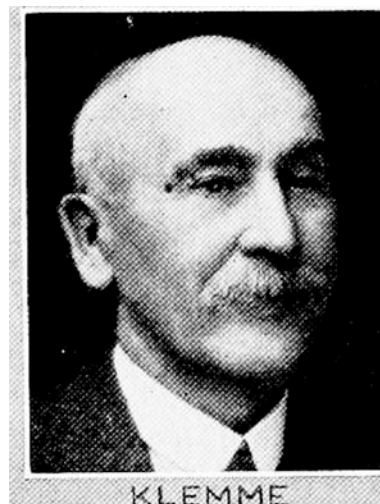


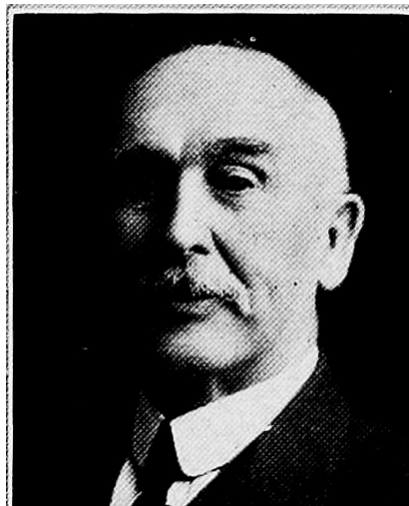
**WILLIAM H. KLEMME, Ridgeway.**—Senator from the forty-second district, composed of Winneshiek and Howard counties, was born in Franklin county, Indiana, February 17, 1849. He came to Iowa with his parents in the spring of 1862 and located on a farm of 200 acres, which his father purchased from the government in 1857 for a dollar and a quarter per acre. He remained there until he was twenty-one years old. He was married to Mary Augusta Bolles in 1870. They have one daughter, Mrs. J. G. Parker, of Fayette, Iowa. He was postmaster during McKinley's term of office, and justice of peace in Lincoln township thirty-two years. He was a member of the house of representatives during the twenty-fifth, twenty-sixth, and twenty-seventh general assemblies and the extra session. Elected senator in 1926, re-elected in 1930. Has been engaged in the lumber and coal business since 1873. A republican.



**WILLIAM H. KLEMMÉ.**—Senator from the forty-second district, composed of Winneshiek and Howard counties, was born in Franklin county, Ind., February 17, 1849. He came to Iowa with his parents in the spring of 1862 and located on a farm of 200 acres, which his father purchased from the government in 1857 for a dollar and a quarter per acre. He remained there until he was twenty-one years old. He was married to Mary Augusta Bolles in 1870. They have one daughter, Mrs. J. G. Parker, of Fayette, Iowa. He was postmaster during McKinley's term of office, and justice of peace in Lincoln township thirty-two years. He was a member of the house of representatives during the twenty-fifth, twenty-sixth, and twenty-seventh general assemblies and the extra session. Elected senator in 1926, re-elected in 1928. Has been engaged in the lumber and coal business since 1873. A republican in politics.



**WILLIAM H. KLEMME.**—Senator from the forty-second district, composed of Winneshiek and Howard counties, was born in Franklin county, Ind., February 17, 1849. He came to Iowa with his parents in the spring of 1862 and located on a farm of 200 acres, which his father purchased from the government in 1857 for a dollar and a quarter per acre. He remained there until he was twenty-one years old. He was married to Mary Augusta Bolles in 1870. They have one daughter, Mrs. J. G. Parker, of Fayette, Iowa. He was postmaster during McKinley's term of office, and justice of peace in Lincoln township for thirty-two years. He was a member of the house of representatives during the twenty-fifth, twenty-sixth and twenty-seventh general assemblies and the extra session. Elected senator in 1926. Has been engaged in the lumber and coal business since 1873. A republican in politics.



**WILLIAM H. KLEMME**—Senator from the forty-second district, composed of Winneshiek and Howard counties, was born in Franklin county, Ind., February 17, 1849. He came to Iowa with his parents in the spring of 1862 and located on a farm of 200 acres, which his father purchased from the government in 1857 for a dollar and a quarter per acre. He remained there until he was twenty-one years old. He was married to Mary Augusta Bolles in 1870. They have one daughter, Mrs. J. G. Parker, of Fayette, Iowa. He was postmaster during McKinley's term of office, and justice of peace in Lincoln township for thirty-two years. He was a member of the house of representatives during the twenty-fifth, twenty-sixth and twenty-seventh general assemblies and the extra session. Elected senator in 1926. Has been engaged in the lumber and coal business since 1873. A republican in politics.