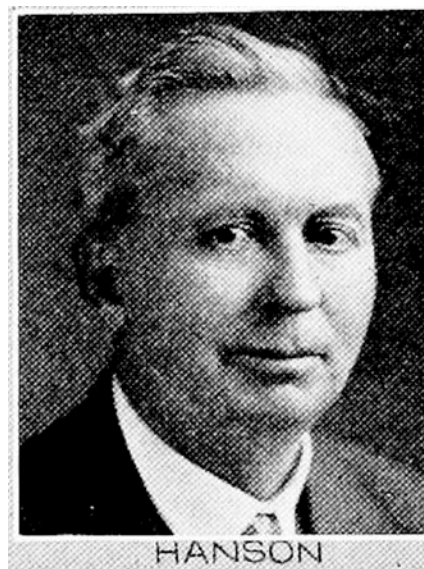




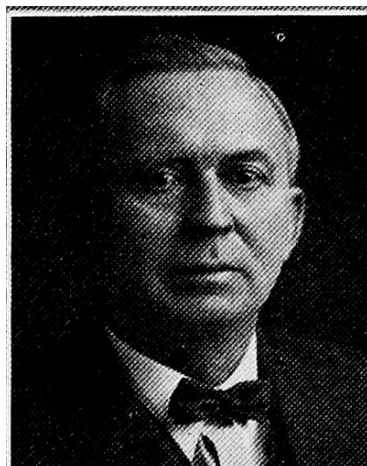
**HENRY N. HANSON, Leland.**—Representative from Winnebago county, was born on a farm in Webster county, Iowa, September 3, 1876. He received his education in the rural schools of his county, in Luther Academy at Bode, Humboldt county, Iowa, and at Humboldt College, Humboldt, Iowa. He engaged in the general merchandise business with his father in 1893 until moving to North Dakota in the fall of 1902, filing on a homestead on which he lived and proved up in 1909. He then returned to Iowa and settled on a farm in Winnebago county. He served as a member of the board of supervisors, resigning to better look after his duties on the farm. Since 1914 he has acted as auditor of the Co-operative Elevator and Creamery Association at Leland. In June, 1928, was elected president of the Leland Cooperative bank; served in the forty-first, forty-second, forty-second extra, forty-third, forty-fourth and forty-fifth general assemblies. A republican.



**HENRY N. HANSON.**—Representative from Winnebago county, was born on a farm in Webster county, Iowa, September 3, 1876. He received his education in the rural schools of his county, in Luther Academy at Bode, Humboldt county, Iowa, and at the Humboldt college, Humboldt, Iowa. He engaged in the general merchandise business with his father in 1893 until moving to North Dakota in the fall of 1902, filing on a homestead on which he lived and proved up in 1909. He then returned to Iowa and settled on a farm in Winnebago county. He served as a member of the board of supervisors, resigning to better look after his duties on the farm. Since 1914 he has acted as auditor of the co-operative elevator and creamery association at Leland. In June, 1928, was elected president of the Leland Co-operative bank; served in the forty-first, forty-second, forty-second extra, forty-third, and forty-fourth general assemblies. A republican.



**HENRY N. HANSON.**—Representative from Winnebago county, was born on a farm in Webster county, Iowa, September 3, 1876. He received his education in the rural schools of his county, in Luther Academy at Bode, Humboldt county, Iowa, and at the Humboldt college, Humboldt, Iowa. He engaged in the general merchandise business with his father in 1893 until moving to North Dakota in the fall of 1902, filing on a homestead on which he lived and proved up in 1909. He then returned to Iowa and settled on a farm in Winnebago county. He served as a member of the board of supervisors, resigning to better look after his duties on the farm. Since 1914 he has acted as auditor of the co-operative elevator and creamery association at Leland. In June, 1928, was elected president of the Leland Co-operative bank; served in the forty-first, forty-second and forty-second extra general assemblies; was re-elected as a member of the forty-third general assembly in the November election of 1928; is a republican in politics.



**HENRY N. HANSON.**—Representative from Winnebago county, was born on a farm in Webster county, Iowa, September 3, 1876. He received his education in the rural schools of his county, in Luther Academy at Bode, Humboldt county, Iowa, and at the Humboldt college, Humboldt, Iowa. He engaged in the general merchandise business with his father in 1893 until moving to North Dakota in the fall of 1902, filing on a homestead on which he lived and proved up in 1909. He then returned to Iowa and settled on a farm in Winnebago county. He served as a member of the board of supervisors, resigning to better look after his duties on the farm. Since 1914 he has acted as auditor of the co-operative elevator and creamery association at Leland, secretary of the school board, and has held other public offices in his township. In the fall of 1924 was elected to the legislature and re-elected in 1926. Is a republican in politics.



**HENRY N. HANSON.**—Representative from Winnebago county, was born on a farm in Webster county, Iowa, September 3, 1876. He received his education in the rural schools of his county, in Luther Academy at Bode, Humboldt county, Iowa, and at the Humboldt college, Humboldt, Iowa. He engaged in the general merchandise business with his father in 1893 until moving to North Dakota in the fall of 1902, filing on a homestead on which he lived and proved up in 1909. He then returned to Iowa and settled on a farm in Winnebago county. He served as a member of the board of supervisors, resigning to better look after his duties on the farm. Since 1914 he has acted as auditor of the co-operative elevator and creamery association at Leland, secretary of the school board, and has held other public offices in his township. In the fall of 1924 was elected to the legislature. Is a republican in politics.