



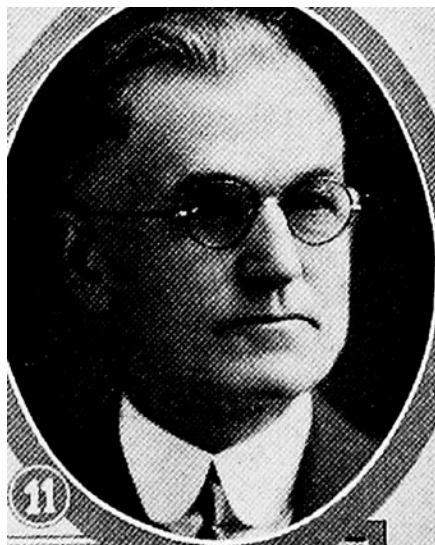
**WILLIAM CARDEN, Winfield.**—Senator from the tenth senatorial district including Washington and Henry counties, was born on a farm near Middletown in Des Moines county, Iowa. Attended the country school, later took a course at the state normal school and finished his education at Parsons College, Fairfield, Iowa. Mr. Carden taught school about three years and then entered the hardware and implement business at Winfield, Iowa. He served as postmaster under President Taft, after which he engaged in the insurance and loan business. He is vice president of the Winfield National Bank. He is a member of the different lodges of his town, as well as having been active in its civic affairs. A member of the Presbyterian church and has been moderator of the Presbyterian as well as vice moderator of the synod of Iowa. He was first district manager of the Coolidge campaign in 1925. Served as a representative in four general assemblies and now serving his second term as senator. A republican.



**WILLIAM CARDEN.**—Senator from the tenth senatorial district including Washington and Henry counties, was born on a farm near Middletown in Des Moines county, Iowa. Attended the country school, later took a course at the state normal school and finished his education at Parsons college, Fairfield, Iowa. Mr. Carden taught school about three years and then entered the hardware and implement business at Winfield, Iowa. He served as postmaster under President Taft, after which he engaged in the insurance and loan business. He is vice-president of the Winfield National Bank. He is a member of the different lodges of his town, as well as having been active in its civic affairs. He is a member of the Presbyterian church and has been moderator of the Presbytery as well as vice-moderator of the synod of Iowa. He was first district manager of the Coolidge campaign in 1925. Has previously served in the lower house and is now serving his second term in the senate.



**WILLIAM CARDEN.**—Senator from the tenth senatorial district including Washington and Henry counties, was born on a farm near Middletown in Des Moines county, Iowa. Attended the country school, later took a course at the state normal school and finished his education at Parsons college, Fairfield, Iowa. Mr. Carden taught school about three years and then entered the hardware and implement business at Winfield, Iowa. He served as postmaster under President Taft, after which he engaged in the insurance and loan business. He is vice-president of the Winfield National Bank. He is a member of the different lodges of his town, as well as having been active in its civic affairs. He is a member of the Presbyterian church and has been moderator of the Presbytery as well as vice-moderator of the synod of Iowa. He was first district manager of the Coolidge campaign in 1925. Has previously served in the lower house and is now serving his second session in the senate.



**WILLIAM CARDEN.**—Senator from the tenth senatorial district including Washington and Henry counties, was born on a farm near Middletown in Des Moines county, Iowa. Attended the country school, later took a course at the state normal school and finished his education at Parsons college, Fairfield, Iowa. Mr. Carden taught school for about three years and then entered the hardware and implement business at Winfield, Iowa. He served as postmaster under President Taft, after which he engaged in the insurance and loan business. He is a member of the different lodges of his town, as well as having been active in its civic affairs. He is a member of the Presbyterian church and has been moderator of the Presbytery as well as vice moderator of the Synod of Iowa. He was first district manager of the Coolidge campaign in 1925. Has previously served in the lower house and is now serving his first term in the senate.