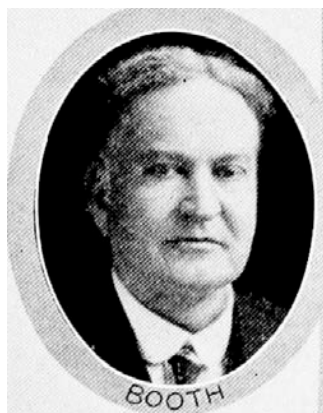
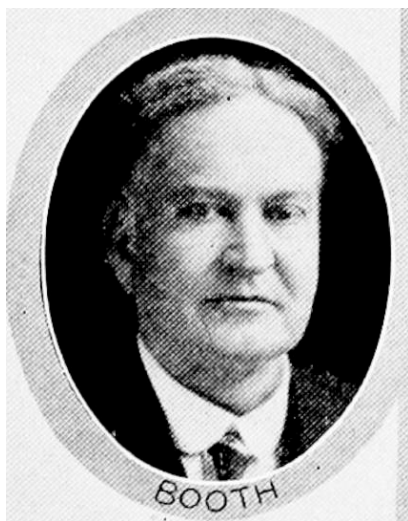




CHAS. D. BOOTH, Harlan.—Senator from the eighteenth district, comprising Cass and Shelby counties, was born in Stockton, California, January 2, 1870. In 1871 the family moved from California to a farm two miles east of Harlan, Shelby county, Iowa, where they lived until 1881, at which time they moved to Harlan. He graduated from the Harlan high school in 1888, and afterward finished one year's work at the Iowa State College at Ames. He has been president of the Harlan Commercial Club, the Kiwanis Club, and the Masonic Temple Association, serving as presiding officer of all the Masonic bodies up to and including the Commandery. Was county chairman of three successful war drives. He served in the Iowa senate during the forty-second, forty-second extra, forty-third, and was elected without opposition to the forty-fourth and forty-fifth general assemblies. He married Edith Pickard of Harlan October 31, 1895. They have one daughter, Estella May. The family holds membership in the Congregational church. He has been a consistent republican in politics, and acted as county chairman from 1920 to 1926.



CHAS. D. BOOTH.—Senator from the eighteenth district, comprising Cass and Shelby counties, was born in Stockton, California, January 2, 1870. In 1871 the family moved from California to a farm two miles east of Harlan, Shelby county, Iowa, where they lived until 1881, at which time they moved to Harlan. He graduated from the Harlan high school in 1888, and afterward finished one year's work at the Iowa State college at Ames. Following this he assisted his father in the farm machinery business in Harlan, and when of age was made partner in the business. He still holds a substantial interest in the business, which is continued under the name of the Booth Motor Company. Although living in Harlan he operates four hundred acres of land which is well stocked. Has served as township clerk of Harlan township, and city councilman of Harlan, and ten years in the Harlan volunteer fire department, two years of which he was chief. Has been president of the Harlan commercial club, the Kiwanis club, and the Masonic Temple Association. Has served as presiding officer of all the Masonic bodies up to and including the Commandery. Was director in the Shelby County Farmers Mutual Telephone Company fifteen years. County chairman of three successful war drives. Served in the Iowa senate during the forty-second, forty-second extra, forty-third, and forty-fourth general assemblies. Married October 31, 1895, to Edith Pickard of Harlan, and they now have one daughter, Estella May. The family holds membership in the Congregational church. Has been a consistent republican in politics, county chairman from 1920 to 1926.



CHAS. D. BOOTH.—Senator from the eighteenth district, comprising Cass and Shelby counties, was born in Stockton, California, January 2, 1870. In 1871 the family moved from California to a farm two miles east of Harlan, Shelby county, Iowa, where they lived until 1881, at which time they moved to Harlan. He graduated from the Harlan high school in 1888, and afterward finished one year's work at the Iowa State college at Ames. Following this he assisted his father in the farm machinery business in Harlan, and when of age was made partner in the business. He still holds a substantial interest in the business, which is continued under the name of the Booth Motor Company. Although living in Harlan he operates four hundred acres of land which is well stocked. Has served as township clerk of Harlan township, and city councilman of Harlan, and ten years in the Harlan volunteer fire department, two years of which he was chief. Has been president of the Harlan Commercial club, the Kiwanis club, and the Masonic Temple Association. Has served as presiding officer of all the Masonic bodies up to and including the Commandery. Was director in the Shelby County Farmers Mutual Telephone Company fifteen years. County chairman of three successful war drives. Served in the Iowa senate during the forty-second, forty-second extra and forty-third general assemblies. Married October 31, 1895, to Edith Pickard of Harlan, and they now have one daughter, Estella May, who is attending high school. The family holds membership in the Congregational church. Has been a consistent republican in politics, county chairman from 1920 to 1926. Elected to senate in 1926.



CHAS. D. BOOTH.—Senator from the eighteenth district, comprising Cass and Shelby counties, was born in Stockton, California, January 2, 1870. In 1871 the family moved from California to a farm two miles east of Harlan, Shelby county, Iowa, where they lived until 1881, at which time they moved to Harlan. He graduated from the Harlan high school in 1888, and afterward finished one year's work at the Iowa State college at Ames. Following this he assisted his father in the farm machinery business in Harlan, and when of age was made partner in the business. He still holds a substantial interest in the business, which is continued under the name of The Booth Motor Company. Although living in Harlan he operates four hundred acres of land which is well stocked. Has served as township clerk of Harlan township, and city councilman of Harlan, and ten years in the Harlan volunteer fire department, two years of which he was chief. Has been president of the Harlan Commercial Club, the Kiwanis Club, and the Masonic Temple Association. Has served as presiding officer of all the Masonic bodies up to and including the Commandery. Was director in the Shelby County Farmers Mutual Telephone Company for fifteen years. County chairman of three successful war drives. Married October 31, 1895, to Edith Pickard of Harlan, and they now have one daughter, Estella May, who is attending high school. Has been a consistent republican in politics, county chairman from 1920 to 1926. Elected to senate in 1926.