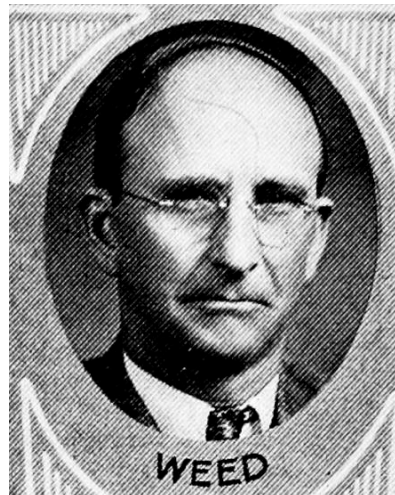




ARTHUR RAY WEED, Winterset.—Representative from Madison county; was born near Irwin, Shelby county, Iowa, November 15, 1877. He moved with his parents to North Loup, Nebraska, in 1885, and in 1891 he, with his older sister, Sibyl, went to White Water, Colorado. In 1892 he returned to Port Union, Adair county, Iowa, and in 1895 moved to Madison county and has resided in Madison county since that time. On November 16, 1898, he was married to Flora J. Little and they have four children: Lonnie L., Christina Husted, Lyle A., and Edna, who died in infancy. His education has been in the college of hard knocks. At the age of forty-two he was admitted to the active ministry of the Methodist Episcopal church and since that time has served in that capacity. He was reared on a farm and has worked on a farm all his life, and his ministry has been among the rural people. Serving second term in the legislature. A republican.



ARTHUR RAY WEED, Winterset.—Representative from Madison county, was born near Irwin, Shelby county, Iowa, November 15, 1877. He moved with his parents to North Loup, Nebraska, in 1885, and in 1891 he with his older sister, Sibyl, went to White Water, Colorado. In 1892 he returned to Fort Union, Adair county, Iowa, and in 1895 moved to Madison county and has resided in Madison county since that time. On November 16, 1898, he was married to Flora J. Little and they have four children: Lonnie L., Christina Husted, Lyle A., and Edna, who died in infancy. His education has been in the college of hard knocks. At the age of forty-two he was admitted to the active ministry in the M. E. church and since that time has served in that capacity. He was reared on a farm and has worked on the farm all his life, and his ministry has been among the rural people. Serving first term in the legislature. A republican.