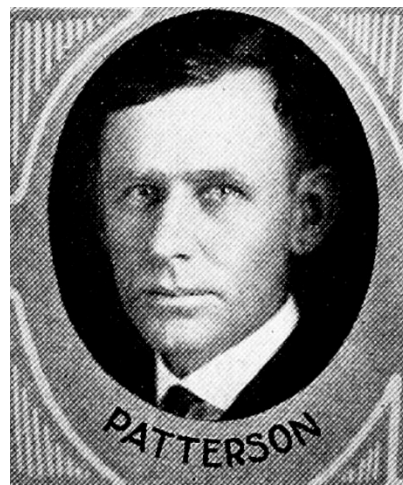




G. W. PATTERSON, Burt.—Senator from the forty-seventh district, including Emmet, Palo Alto, Clay, Dickinson and Kossuth counties, was born at Burt, Iowa, September 4, 1887, of Scotch parentage. Graduate of Burt high school. Graduated from Iowa State college, animal husbandry department, 1909. Married December 28, 1913, to Miss Eva M. Stensrud, Lake Mills, Iowa. Has three children: Donald W., Virginia Mae, and Kenneth Howard. Business, farming and stock feeding. Elected to house of representatives, 1922; re-elected in 1924 and 1926. Elected senator in 1928; re-elected 1932. A republican.



G. W. PATTERSON, Burt—Senator from the forty-seventh district, including Emmet, Palo Alto, Clay, Dickinson and Kossuth counties, was born at Burt, Iowa, September 4, 1887, of Scotch parentage. Graduate of Burt high school. Graduated from Iowa State College, animal husbandry department, 1909. Married December 28, 1913, to Miss Eva M. Stensrud, Lake Mills, Iowa. Has three children, Donald W., Virginia Mae, and Kenneth Howard. Business, farming and stock feeding. Elected to house of representatives, 1922; re-elected in 1924 and 1926. Elected senator in 1928; re-elected 1932. A republican.



G. W. PATTERSON.—Senator from the forty-seventh district, including Emmet, Palo Alto, Clay, Dickinson and Kossuth counties, was born at Burt, Iowa, September 4, 1887, of Scotch parentage. Graduate of Burt high school. Graduated from Iowa State college, animal husbandry department, 1909. Married December 28, 1914, to Miss Eva M. Stensrud, Lake Mills, Iowa. Has three children, Donald W. Patterson, Virginia Mae Patterson, and Kenneth Howard Patterson. Business, farming and stock feeding. Elected to house of representatives, 1922; re-elected in 1924 and 1926. Elected senator in 1928. A republican.



G. W. PATTERSON.—Senator from the forty-seventh district, including Emmet, Palo Alto, Clay, Dickinson and Kossuth counties, was born at Burt, Iowa, September 4, 1887, of Scotch parentage. Graduate of Burt high school. Graduated from Iowa State college, animal husbandry department, 1909. Married December 28, 1914, to Miss Eva M. Stensrud, Lake Mills, Iowa. Has two children, Donald W. Patterson and Virginia Mae Patterson. Business, farming and stock feeding. Elected to house of representatives 1922; re-elected in 1924 and 1926. Elected senator in 1928. A republican.



G. W. PATTERSON.—Representative from Kossuth county, born at Burt, Iowa, September 4, 1887, of Scotch parentage. Graduate of Burt high school. Graduated from Iowa State College, animal husbandry department, 1909. Married December 28, 1914, to Miss Eva M. Stensrud, Lake Mills, Iowa. Has two children, Donald W. Patterson and Virginia Mae Patterson. Business, farming and stock feeding. Elected to house of representatives 1922. Re-elected in 1924 and in 1926. A republican.



G. W. PATTERSON.—Representatives from Kossuth county, born at Burt, Iowa, September 4, 1887, of Scotch parentage. Graduate of Burt high school. Graduated from Iowa state college, animal husbandry department, 1909. Married December 28, 1914, to Miss Eva M. Stensrud, Lake Mills, Iowa. Has two children, Donald W. Patterson and Virginia Mae Patterson. Business, farming and stock feeding. Elected to house of representatives 1922. Re-elected in 1924. A republican.



G. W. PATTERSON.—Representative from Kossuth county, born at Burt, Iowa, September 4, 1887, of Scotch parentage. Graduate of Burt high school. Graduated from Iowa state college, animal husbandry department, 1909. Married December 28, 1914, to Miss Eva M. Stensrud, Lake Mills, Iowa. Has two children, Donald W. Patterson and Virginia Mae Patterson. Business, farming and stock feeding. Elected to house of representatives 1922. A republican.