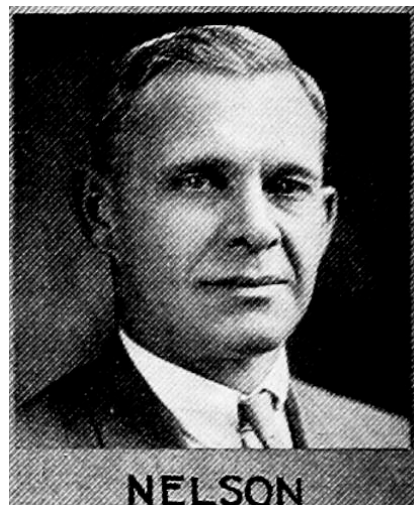
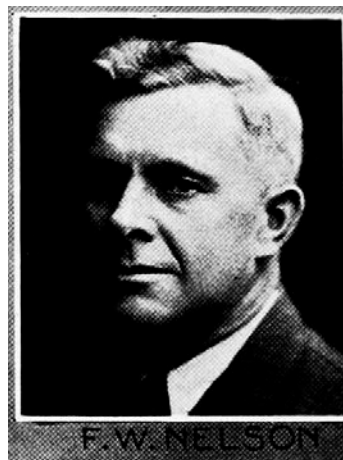




FRED W. NELSON, Nevada.—Senator from the thirty-first district, composed of Boone and Story counties, was born April 7, 1886, in Story county, Iowa. He received his early education in the rural schools and later at Highland Park college at Des Moines, and at Iowa State college. Was married to Edna R. Smith, February 22, 1911, and has four children: Avis Vere, Richard F., Robert L., and Donald L. Served as township clerk eighteen years, as board member of the Story county farm bureau four years, treasurer three years, and president three years. He is a member of the Nevada lodge No. 99, A. F. and A. M., and was master of that order in 1926, and is also member of O. E. S. Served as a member and president of the North Grant consolidated school board, and is board member of the Farmers Elevator company and Farmers Grain Dealers association of Iowa. Former member of Nevada Rotary club. Awarded master farmer medal, January 13, 1927. Member of Lutheran church. Elected representative in 1928 and 1930 and senator in 1932. A republican.



FRED W. NELSON, Nevada.—Senator from the thirty-first district, composed of Boone and Story counties, was born April 7, 1886, in Story county, Iowa. He received his early education in the rural schools and later at Highland Park College at Des Moines, and at Iowa State College. Was married to Edna R. Smith, February 22, 1911, and has four children: Avis Vere, Richard F., Robert L., and Donald L. Served as township clerk eighteen years, as board member of the Story County Farm Bureau four years, treasurer three years, and president three years. He is a member of the Nevada Lodge No. 99, A. F. and A. M., and was master of that order in 1926, and is also a member of O. E. S. Served as a member and president of the North Grant consolidated school board, and is board member of the Farmers Elevator Company and Farmers Grain Dealers Association of Iowa. Former member of Nevada Rotary Club. Awarded master farmer medal, January 13, 1927. Member of Lutheran church. Elected representative in 1928 and 1930 and senator 1932. A republican.



FRED W. NELSON.—Representative from Story county. His parents came from Denmark in the late sixties and found employment soon after in the silver mining industry in the Carson Valley, state of Nevada. A few years later they moved to Iowa, located on a farm in Grant township, Story county, where the representative was born on April 7, 1886, and where he still resides. He received his early education in the rural schools and later at Highland Park college at Des Moines, Iowa, and Iowa State College. Was married to Edna R. Smith, February 22, 1911. Has four children: Avis Vere, Richard F., Robert L., and Donald L. Served as township clerk eighteen years, as board member of the Story county farm bureau four years, treasurer three years, and president three years. Is a member of the Nevada Lodge No. 99, A. F. and A. M. Was Master of that order in 1926. Is also a member of O. E. S. Served as a member and president of the North Grant consolidated school board. Is board member of local shipping association and farmers elevator company. Former member of Nevada, Iowa, Rotary club. Awarded master farmer medal, January 13, 1927. Member of Lutheran church. Elected representative in 1928 and 1930. Republican.



FRED W. NELSON.—Representative from Story county. His parents came from Denmark in the late sixties and found employment soon after in the silver mining industry in the Carson Valley, state of Nevada. A few years later they moved to Iowa, located on a farm in Grant township, Story county, where the representative was born on April 7, 1886, and where he still resides. He received his early education in the rural schools and later at Highland Park college at Des Moines, Iowa, and Iowa State College. Was married to Edna H. Smith, February 22, 1911. Has four children, Avis Vere, Richard F., Robert L., and Donald L. Served as township clerk eighteen years, as board member of the Story county farm bureau four years, treasurer three years, and president three years. Is a member of the Nevada Lodge No. 99 A. F. and A. M. Was master of that order in 1926. Is also a member of O. E. S. Served as a member and president of the North Grant consolidated school board. Is board member of local shipping association and farmers elevator company. Member of Nevada, Iowa, Rotary club. Awarded master farmer medal, January 13, 1927. Member of Lutheran church. Elected representative in 1928. Republican in politics.