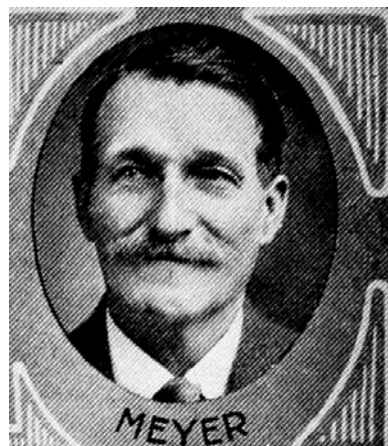




L. H. MEYER, Readlyn.—Senator from the thirty-ninth district, composed of Bremer and Butler counties, was born on a farm near Readlyn, Bremer county, Iowa, December 17, 1876, where he attended public schools. He was married to Mary Rohrsen in 1899. To this union three children were born, only one living to maturity, Paul L., of Readlyn. Due to ill health they moved to the town of Readlyn in 1906, where they have since resided. He is engaged in the livestock and grain business and has held numerous town and township offices. He served on the questionnaire board during the World war. He is a Lutheran in faith and is serving his first term in the legislature. A democrat.



L. H. MEYER, Readlyn.—Senator from the thirty-ninth district, composed of Bremer and Butler counties, was born on a farm near Readlyn, Bremer county, Iowa, December 17, 1876, where he attended public schools. He was married to Mary Rohrsen in 1899. To this union three children were born, only one living to maturity, Paul L., of Readlyn. Due to ill health they moved to the town of Readlyn in 1906, where they have since resided. He is engaged in the live stock and grain business and has held numerous town and township offices. He served on the questionnaire board during the World War. He is a Lutheran in faith and is serving his first term in the legislature. A democrat.