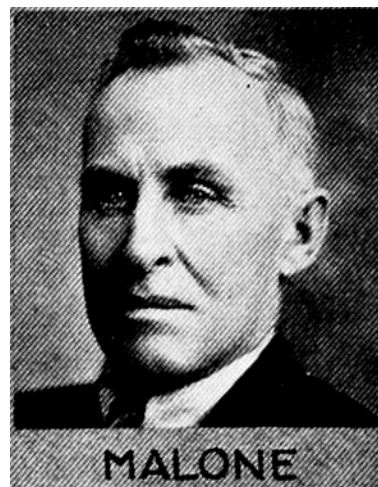
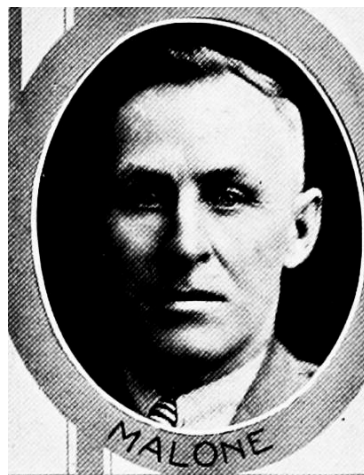




CHARLES E. MALONE, Atlantic.—Senator from the eighteenth district, composed of Cass and Shelby counties, was born on a farm in Cass county, Iowa, October 24, 1881. Attended country school in that county. He has been interested in growing and exhibiting of purebred seed corn and grains for over thirty years, and served as assistant superintendent of the Iowa department of agriculture at World's fair at St. Louis, Missouri, in 1903. Married to Edna E. Harris, April 18, 1906, and has two sons: Claude and Cecil. Engaged in farming and operating seed store. Served as county treasurer for two terms, and as county supervisor for three terms in Cass county. Was chosen by Dante Pierce, editor Iowa Homestead, to represent farmers of middle west in Chicago in 1931 at the installation of new equipment of C., R. I. & P. R. R. Elected as representative from Cass county at the 1930 and 1932 elections and to the senate in 1934. A democrat.



CHARLES E. MALONE, Atlantic.—Representative from Cass county, was born on a farm in Cass county, Iowa, October 24, 1881. Attended country school in that county. He has been interested in growing and exhibiting of purebred seed corn and grains for over thirty years, and served as assistant superintendent of the Iowa department of agriculture at World's Fair at St. Louis, Missouri, in 1903. Married to Edna E. Harris, April 18, 1906, and has two sons: Claude and Cecil. Engaged in farming and operating seed store. Served as county treasurer for two terms, and as county supervisor for three terms in Cass county. Was chosen by Dante Pierce, editor Iowa Homestead, to represent farmers of middle west in Chicago in 1921 at the installation of new equipment of C., R. I. & P. R. R. Elected to the legislature in 1930 and re-elected in 1932. A democrat.



CHARLES E. MALONE.—Representative from Cass county, was born in Cass county, Iowa, October 24, 1881. Attended country school, became interested in agricultural work, the growing and exhibiting of purebred seed corn, and other grains. Served as assistant superintendent Iowa department of agriculture at the World's Fair held at St. Louis, Missouri, in 1903. Was married to Edna E. Harris, April 18, 1906. Have two sons: Claude and Cecil. Engaged in farming. Served four years as county treasurer of Cass county; also six years as a member of the board of supervisors. Chosen by Dante Pierce of the Iowa Homestead to represent the farmers of the middle west in Chicago in 1930 at the installing of the new equipment by the C. R. I. & P. R. R. A lifelong democrat and farmer.