



HUSH

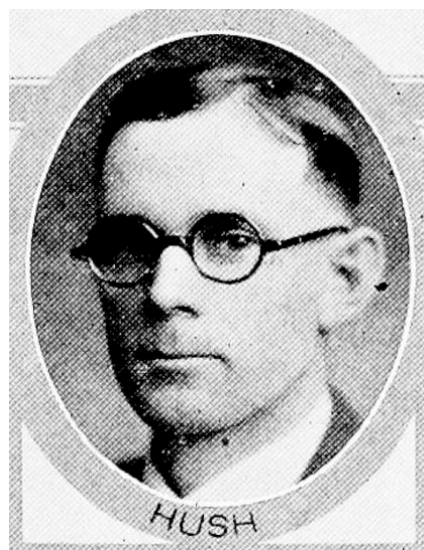
HOMER HUSH, Essex.—Senator from the eighth district, composed of Mills and Montgomery counties, was born July 14, 1889, in West township, Montgomery county, Iowa, on the farm which he now owns and operates. His parents settled in Montgomery county at an early time. He was educated in the schools of Montgomery county and at Simpson college. In 1910 he married Ada M. Fryrear of Mills county, and they have three boys, Howard, Clarence and Merle. Mr. Hush was elected representative from Montgomery county in 1928 and 1930 and was elected to the senate in 1932. A republican.



HOMER HUSH, Essex.—Senator from the eighth district, composed of Mills and Montgomery counties, was born July 14, 1889, in West township, Montgomery county, Iowa, on the farm which he now owns and operates. His parents settled in Montgomery county at an early time and lived for more than thirty years on this same farm. He was educated in the schools of Montgomery county and at Simpson College. In 1910, he married Ada M. Fryrear of Mills county, and they have three boys, Howard, Clarence and Merle. Mr. Hush was elected to the Iowa house of representatives from Montgomery county in 1928 and 1930 and was elected to the senate in 1932. A republican.



HOMER HUSH.—Representative from Montgomery county, was born in West township, Montgomery county, on the farm which he now owns and operates, July 14, 1889. His parents settled in Montgomery county at an early time and lived for more than thirty years on this same farm. Educated in the schools of Montgomery county and Simpson college. Married Ada M. Fryrear in 1910. They have three boys, Howard, Clarence, and Merle. He is a member of the Methodist church, Masonic lodge, and Eastern Star. Served as president of the Montgomery county farm bureau, and is now serving his second term as representative.



HOMER HUSH.—Representative from Montgomery county, was born in West township, Montgomery county, on the farm which he now owns and operates, July 14, 1889. His parents settled in Montgomery county at an early time and lived for more than thirty years on this same farm. Educated in the schools of Montgomery county and Simpson college. Married Ada M. Fryrear in 1910. They have three boys, Howard, 17, Clarence, 14, and Merle, 8. He is a member of the Methodist church, Masonic lodge, and Eastern Star. Served as president of the Montgomery county farm bureau, and is now serving his first term as representative.