



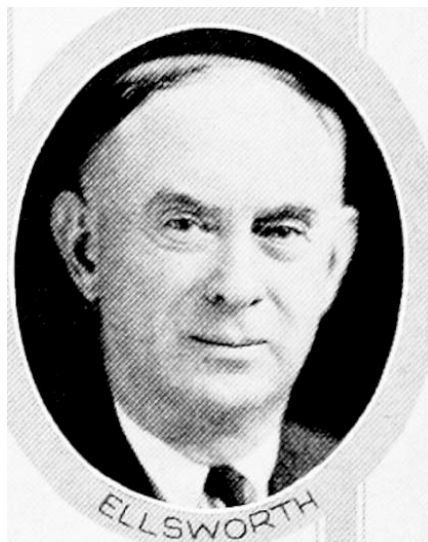
**E. O. ELLSWORTH, Iowa Falls.**—Representative from Hardin county, was born in Iowa Falls in the county he represents and where he is still engaged in business. Was actively identified with the construction of the Des Moines, Iowa Falls and Northern railroad from Iowa Falls to Des Moines, now a part of the Rock Island system. During the World war was assigned to the preliminary training of all boys called into service from Hardin county. Member of both York and Scottish branches of Masonry. Elected to forty-third, forty-fourth, forty-fifth and forty-sixth general assemblies. Was the republican nominee for speaker of the house of representatives in the forty-sixth general assembly. A republican.



**E. O. ELLSWORTH, Iowa Falls.**—Representative from Hardin county, was born in Iowa Falls in the county he represents and where he is still engaged in business. Was actively identified with the construction of the Des Moines, Iowa Falls and Northern railroad from Iowa Falls to Des Moines, now a part of the Rock Island system. During the World War was assigned to the preliminary training of all boys called into service from Hardin county. Member of both York and Scottish branches of Masonry. Elected to forty-third assembly and re-elected to the forty-fourth and forty-fifth. A republican.



**E. O. ELLSWORTH.**—Representative from Hardin county, was born in Iowa Falls in the county he represents and where he is still engaged in the banking and farm loan business. Was actively identified with the construction of the Des Moines, Iowa Falls and Northern Railroad from Iowa Falls to Des Moines, now a part of the Rock Island system. During the World war was assigned to the preliminary military training of all boys called into service from Hardin county. Member of both York and Scottish branches of Masonry. Elected to forty-third assembly. Re-elected to forty-fourth. Republican.



E. O. ELLSWORTH.—Representative from Hardin county, was born in Iowa Falls in the county he represents and where he is still engaged in the banking and farm loan business. Was actively identified with the construction of the Des Moines, Iowa Falls and Northern Railroad from Iowa Falls to Des Moines, now a part of the Rock Island system. During the World War was assigned to the preliminary military training of all boys called into service from Hardin county. Member of both York and Scottish branches of Masonry. Republican.