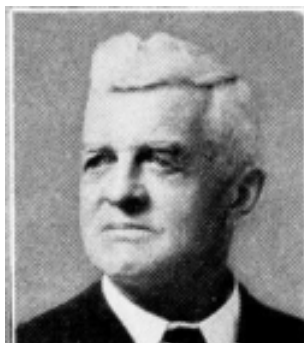




GEORGE M. SCHLATTER, Bellevue.—Representative from Jackson county, was born in Bellevue, Iowa, May 31, 1864. He is a graduate of the Bellevue public school and the State University of Iowa, class of 1885. Civil engineer by profession, but has been engaged in the general grain, seed and banking business for many years. Served as a member of the school board, city treasurer, and filled the office of city mayor for three terms. Married in 1889 to Amella Kucheman and has one daughter, Frances. Elected to fill vacancy in the forty-fifth special session and re-elected in 1934 and in 1936. A democrat.



GEORGE M. SCHLATTER, Bellevue.—Representative from Jackson county, was born in Bellevue, Jackson county, May 31, 1864. Graduate of the Bellevue public school and the State University of Iowa, class of 1885. Civil engineer by profession. Has been engaged in the general grain and seed business for many years; also engaged in banking for twenty-five years, holding the offices of director and president. Served as a member of local school board, city treasurer and filled the office of mayor for three terms. Married in 1889 to Amelia Kucheman and has one daughter, Frances. Elected at a special election to fill vacancy caused by appointment of Representative F. J. Swift as deputy health commissioner and was re-elected in 1934. A democrat.



GEORGE M. SCHLATTER, Bellevue.—Representative from Jackson county, was born in Bellevue, Jackson county, May 31st, 1864. Graduate of the Bellevue public school and the State University of Iowa, class of 1885. Civil engineer by profession. Has been engaged in the general grain and seed business for many years; also engaged in banking for twenty-five years, holding the offices of director and president. Served as a member of local school board, city treasurer and filled the office of mayor for three terms. Married in 1889 to Amelia Kucheman and has one daughter, Frances. Elected at a special election to fill vacancy caused by appointment of Representative F. J. Swift as deputy health commissioner. A democrat.