

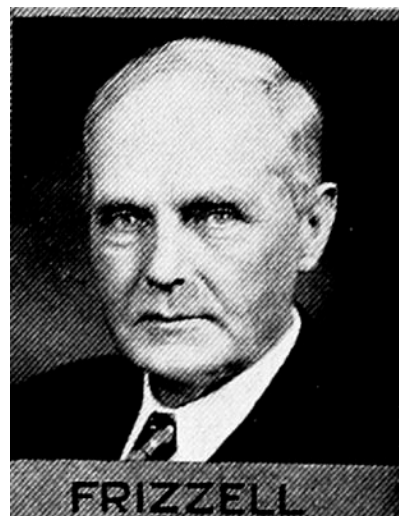


J. W. FRIZZELL, Brooklyn.—Representative from Poweshiek county, was born on a farm three and a half miles northwest of Brooklyn, Iowa, January 10, 1865. His parents, Thomas Frizzell and Margaret (Buchanan) Frizzell, were early settlers coming to Iowa in 1853. He was educated in the rural schools and assisted his father in farming and stock raising until 1891, when he located on the farm two miles west of Brooklyn, which his grandfather had purchased from the government. Married Miss June Sleggel, February 17, 1892. Four children were born, Wayne, Thomas Lee (deceased), Helen Sara Ritter, and Ruth Reading. Resided continuously on the home farm, two miles west of Brooklyn, until 1916, when the family moved to Brooklyn. Served on city council and board of supervisors. Is a member of all branches of the I. O. O. F., a past grand patriarch and past department commander. Also belongs to Knights of Pythias. His church preference is Presbyterian. Serving third term in the legislature. A democrat.



FRIZZELL

J. W. FRIZZELL, Brooklyn.—Representative from Poweshiek county, was born on a farm three and a half miles northwest of Brooklyn, Iowa, January 10, 1865. His parents, Thomas Frizzell and Margaret (Buchanan) Frizzell, were early settlers coming to Iowa in 1853. Educated in the rural schools and assisted his father in farming and stock raising until 1891, when he located on the farm two miles west of Brooklyn, which his grandfather had purchased from the government. Married Miss June Sleggel, February 17, 1892. Four children were born, Wayne, Thomas Lee (deceased), Helen Sara Ritter, and Ruth Reading. Resided continuously on the home farm, two miles west of Brooklyn, until 1916, when the family moved to Brooklyn. Served on city council and board of supervisors. Is a member of all branches of the I. O. O. F., a past grand patriarch and past department commander. Also belongs to Knights of Pythias. His church preference is Presbyterian. Serving second term in the legislature. A democrat.



J. W. FRIZZELL, Brooklyn.—Representative from Poweshiek county, was born on a farm three and a half miles northwest of Brooklyn, Iowa, January 10, 1865. His parents, Thomas Frizzell and Margaret (Buchanan) Frizzell, were early settlers coming to Iowa in 1853. Educated in the rural schools and assisted his father in farming and stock raising until 1891, when he located on the farm two miles west of Brooklyn, which his grandfather had purchased from the government. Married Miss June Sleggel, February 17, 1892. Four children were born, Wayne, Thomas Lee (deceased), Helen Sara Ritter, and Ruth, a student at Iowa State College. Resided continuously on the home farm, two miles west of Brooklyn, until 1916, when the family moved to Brooklyn. Served on city council and board of supervisors. Is a member of all branches of the I. O. O. F., a past grand patriarch and past department commander. Also belongs to Knights of Pythias. His church preference is Presbyterian. Serving first term in the legislature. A democrat.