

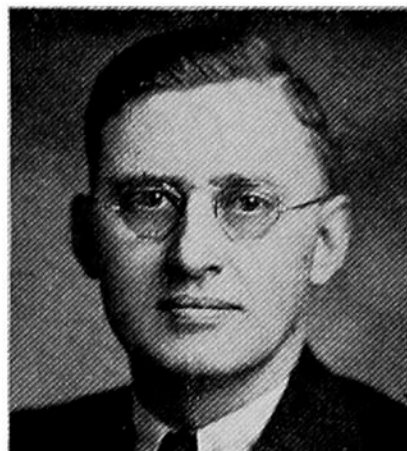


**PRALL, S. E., Indianola**

**Warren County**

*Republican*

Born in Warren county, Iowa, on a farm near Carlisle, February 13, 1905. He attended a rural school and was graduated from the Carlisle high school. Attended Simpson College, Indianola, and graduated from the University of Iowa law school in 1928. Began the practice of law in Indianola, in 1928. Has served as Indianola city attorney, Warren county attorney for four years. He has been a member of the Warren county farm debt advisory council since its beginning. Is a member of I. O. O. F., Lion's Club, and the Methodist church. Married to Martha Mitchell of Oceanside, California, and has one daughter, Kathleen. Serving second term in legislature.



S. E. PRALL, Indianola.—Representative from Warren county, was born in Warren county, Iowa, on a farm near Carlisle, February 13, 1905. He attended the rural school in Palmyra township. He graduated from the Carlisle high school, attended Simpson College at Indianola, Iowa, and graduated from the University of Iowa law school in 1928. Began the practice of law in Indianola, Iowa, in August, 1928. He has served as city attorney of the city of Indianola for several years, and as county attorney of Warren county for four years. He has been a member of the Warren county farm debt advisory council since its beginning in 1933, and has served as secretary of this council. Is a member of I. O. O. F., Lion's club, and the Methodist church. Married and has one daughter. Elected as representative in 1936. A republican.