

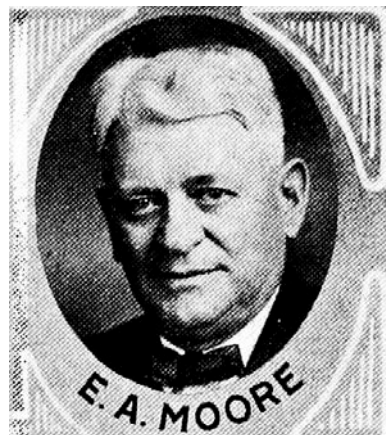


MOORE, Edwin A., Harlan

Shelby County

Democrat

Born in Washington county, Iowa, in 1872, a son of Dr. Edwin B. and Elizabeth (Watters) Moore. Moved to Harlan, Iowa, in 1878. Attended Harlan public schools. Taught school in Portsmouth, Iowa, five years. Graduated from medical department of Creighton University in 1901. Actively engaged in practice of medicine and surgery in Harlan, Iowa, since 1903. A past member of board of education, member of Masonic lodge, active in Kiwanis and community clubs. Married Effie Lathrop in 1897; father of one son, E. Rex, Osage, Iowa, and one daughter, Margaret, wife of Dr. C. F. Peck, D.D.S., of Decorah. Serving third term in the legislature.



EDWIN A. MOORE, Harlan.—Representative from Shelby county, was born in Washington county, Iowa in 1872. Father, Edwin B. Moore, physician; mother, Elizabeth (Watters) Moore. Moved to Harlan, Iowa, in 1878. Attended Harlan public schools. Taught school in Portsmouth, Iowa, five years. Graduated from medical department of Creighton University in 1901. Has been actively engaged in practice of medicine and surgery in Harlan, Iowa, since 1903. Has served as a member of board of education of Harlan, member of Masonic lodge, active in Kiwanis and community clubs. Married Effie Lathrop in 1897, and has one son, E. Rex, federal land bank appraiser living at Osage, Iowa. One daughter, Margaret, wife of Dr. C. F. Peck, D.D.S., of Decorah, Iowa. Elected to the legislature in 1934 and re-elected in 1936. A democrat.



E.A. MOORE

EDWIN A. MOORE, Harlan.—Representative from Shelby county, was born in Washington county, Iowa in 1872. Father, Edwin B. Moore, physician; mother, Elizabeth (Watters) Moore. Moved to Harlan, Iowa in 1878. Attended Harlan public schools. Taught school in Portsmouth, Iowa, five years. Graduated from medical department of Creighton university in 1901. Has been actively engaged in practice of medicine and surgery in Harlan, Iowa, since 1903. Has served as a member of board of education of Harlan, member of Masonic lodge, active in Kiwanis and community clubs. Married Effie Lathrop in 1897. Has one son, E. Rex, federal land bank appraiser living at Osage, Iowa. One daughter, Margaret, wife of Dr. C. F. Peck, D.D.S., of Decorah, Iowa. Elected to the legislature in 1934. A democrat.