

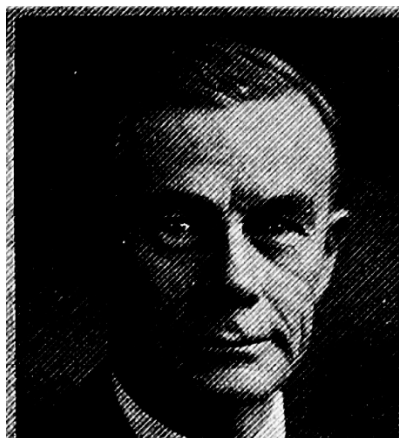


**MIGHELL, Winfred, Holstein**

*Democrat*

46th Senatorial District—Cherokee, Ida and Plymouth Counties

Born at Ames, Iowa, August 28, 1874, a descendant of Deacon Thomas MigHELL, who came to Plymouth colony in 1636 from Brighton, England. Moved with parents to farm in Ida county in 1884; attended country school winter terms. Admitted to Iowa State College at Ames in 1892, attending three years. Taught school and farmed till 1904. Graduated at Iowa City with degree of M.D. in 1908. Practiced medicine and surgery in Washington state and Iowa till 1932, at the same time taking an active part in farming and stock production. Married to Sadie B. Gleason of Cherokee county, April 10, 1901; father of one son and two daughters, Ronald L., a senior economist in the department of agriculture, Washington, D. C.; Winifred Viola (Mrs. Geo.) Mathews of Danville, Iowa, and Helen Lola (Mrs. Charles) Hodde of Colville, Washington. Has served as township clerk, city councilman, coroner, health officer, county physician and surgeon, and bank director. Member Masonic lodge, Unitarian church. Elected to senate in 1936.



**WINFRED MIGHELL, Holstein.**—Senator from the forty-sixth district, composed of Ida, Cherokee and Plymouth counties, was born in Ames, Iowa, August 28, 1874, and is of the ninth generation of Deacon Thomas Mighell who came to Plymouth colony in 1636 from Brighton, England. Moved with parents to farm in Ida county in 1884; worked on farm and attended country school winter terms. Admitted to Iowa State college at Ames in 1892 on examination, attending three years. Taught school and farmed till 1904. Graduated at Iowa City with degree of M.D. in 1908. Practiced medicine and surgery in Washington state and Iowa till 1932, at the same time taking an active part in farming and stock production. Was married to Sadie B. Gleason of Cherokee county, April 10, 1901, and they have one son and two daughters, Ronald L., a senior economist in the department of agriculture, Washington, D. C., Winifred Viola, now Mrs. Geo. Mathews of Danville, Iowa, and Helen Lola, now Mrs. Charles Hodde of Colville, Washington. Has served as township clerk, city councilman, coroner, health officer, county physician and surgeon, and bank director. Member Masonic lodge, Unitarian church and American Hereford Breeder's Association. Elected to senate in 1936. A democrat.