

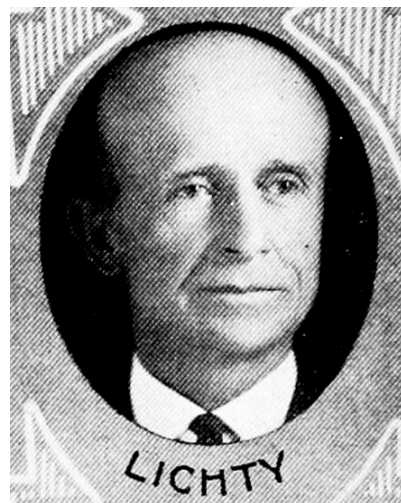


LICHTY, E. M., Waterloo

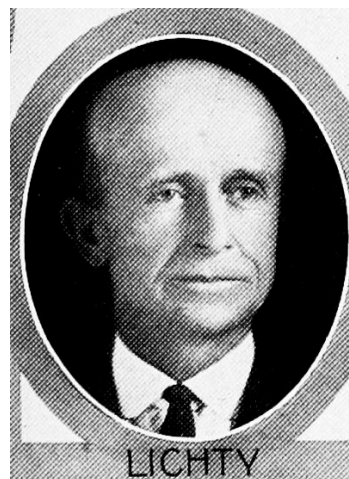
Blackhawk County

Republican

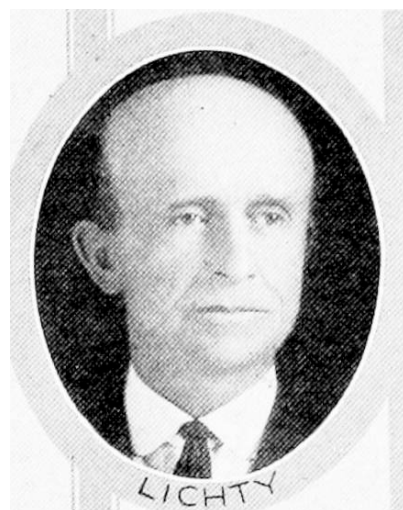
Born in Orange township, Black Hawk county, Iowa, February 2, 1867. When he was six months old his parents moved on the farm where he has lived continuously ever since, and which he now owns. Attended rural schools and business college at Waterloo. Married in 1889 to Emma Miller of Somerset county, Pennsylvania (now deceased); father of seven children, one of whom died in infancy. He has made farming, dairying and livestock feeding his life work. He has served as president of the consolidated school board, secretary and treasurer of the telephone company, township trustee, and chairman of township farm bureau. In December, 1922, he married Clara Miller of Waterloo. Served in the 40th regular and extra, 41st, 42d, 43d, 44th, 45th and 48th general assemblies.



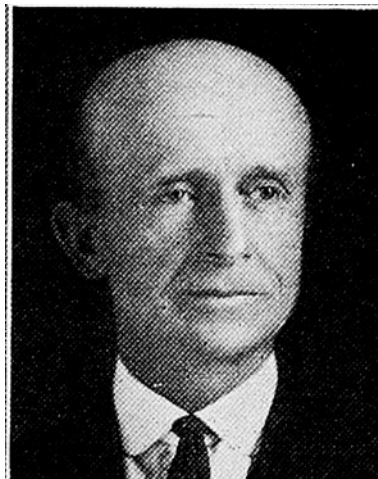
E. M. LICHTY, Waterloo.—Representative from Black Hawk county, was born in Orange township, Black Hawk county, Iowa, February 2, 1867. When he was six months old his parents moved on the farm where he has lived continuously ever since, and which he now owns. He received his education in the rural schools and business college at Waterloo; married in 1889 to Emma Miller of Somerset county, Pennsylvania, and to this union were born seven children, one of whom died in infancy. He has made farming his life work, always raising and feeding a large number of hogs, besides dairying and cattle feeding. After being elected to the fortieth general assembly he resigned as president of the consolidated school board, secretary and treasurer of the telephone company (which office he held for twenty years), township trustee, and chairman of township farm bureau. The three sons and son-in-law are working the several farms consisting of 680 acres on a fifty-fifty basis. In May, 1921, his wife died and in December, 1922, he married Clara Miller of Waterloo, Iowa. Served in the fortieth, fortieth extra, forty-first, forty-second, forty-third, forty-fourth and forty-fifth general assemblies. A republican.



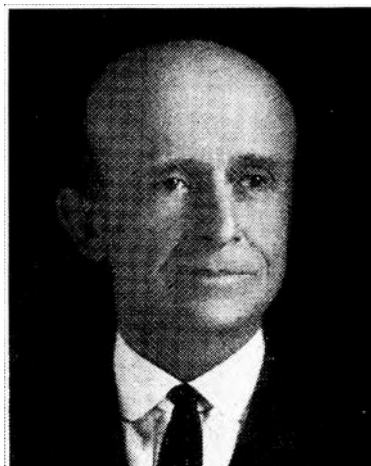
E. M. LICHTY.—Representative from Black Hawk county, was born in Orange township, Black Hawk county, Iowa, February 2, 1867. When he was six months old his parents moved on the farm where he has lived continuously ever since, and which he now owns. He received his education in the rural schools and business college at Waterloo; married in 1889 to Emma Miller of Somerset county, Pennsylvania. To this union were born seven children, one of whom died in infancy. He has made farming his life work, always raising and feeding a large number of hogs, besides dairying and cattle feeding. After being elected to the fortieth general assembly he resigned as president of the consolidated school board, secretary and treasurer of the telephone company, (which office he held for twenty years), township trustee, and chairman of township farm bureau. The three sons and son-in-law are working the several farms consisting of 680 acres on a fifty-fifty basis. In May, 1921, his wife died and in December, 1922, he married Clara Miller of Waterloo, Iowa. Served in the fortieth, fortieth extra, forty-first, forty-second, forty-third, and forty-fourth general assemblies. A republican in politics.



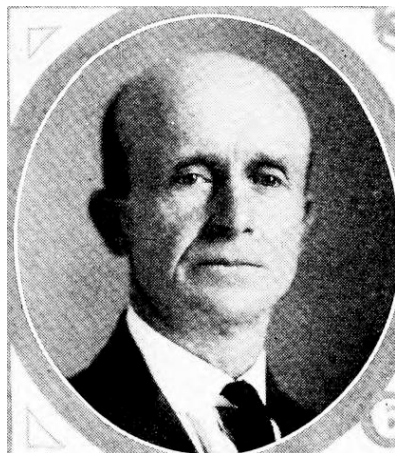
E. M. LICHTY.—Representative from Black Hawk county, was born in Orange township, Black Hawk county, Iowa, February 2, 1867. When he was six months old his parents moved on the farm where he has lived continuously ever since, and which he now owns. He received his education in the rural schools and business college at Waterloo; married in 1889 to Emma Miller of Somerset county, Pennsylvania. To this union were born seven children, one of whom died in infancy. He has made farming his life work, always raising and feeding a large number of hogs, besides dairying and cattle feeding. After being elected to the fortieth general assembly he resigned as president of the consolidated school board, secretary and treasurer of the telephone company (which office he held for twenty years), township trustee, and chairman of township farm bureau. The three sons and son-in-law are working the several farms consisting of 680 acres on a fifty-fifty basis. In May, 1921, his wife died and in December, 1922, he married Clara Miller of Waterloo, Iowa. Served in the fortieth, fortieth extra, forty-first, forty-second and forty-third general assemblies. A republican in politics.



E. M. LICHTY.—Representative from Black Hawk county, was born in Orange township, Black Hawk county, Iowa, February 2, 1867. When he was six months old his parents moved on the farm where he has lived continuously ever since, and which he now owns. He received his education in the rural schools and business college at Waterloo; married in 1889 to Emma Miller of Summerset county, Pennsylvania. To this union were born seven children, one of whom died in infancy. He has made farming his life work, always raising and feeding a large number of hogs, besides dairying and cattle feeding. After being elected to the fortieth general assembly he resigned as president of the consolidated school board, secretary and treasurer of the telephone company (which office he held for twenty years), township trustee, and chairman of township farm bureau. The three sons and son-in-law are working the several farms consisting of 680 acres on a fifty-fifty basis. In May, 1921, his wife died and in December, 1922, he married Clara Miller of Waterloo, Iowa. Served in the fortieth, fortieth extra, forty-first and forty-second general assemblies. A republican in politics.



E. M. LICHTY.—Representative, was born in Orange township, Blackhawk county, Iowa, February 2, 1867. When he was six months old his parents moved on the farm where he has lived continuously ever since, and which he now owns. He received his education in the rural schools and business college at Waterloo; married in 1889 to Emma Miller of Summerset county, Pennsylvania. To this union were born seven children, one of whom died in infancy. He has made farming his life work, always raising and feeding a large number of hogs, besides dairying and cattle feeding. After being elected to the fortieth general assembly he resigned as president of the consolidated school board, secretary and treasurer of the telephone company (which office he held for twenty years), township trustee, and chairman of township farm bureau. The three sons and son-in-law are working the several farms consisting of 680 acres on a fifty-fifty basis. In May, 1921, his wife died and in December, 1922, he married Clara Miller of Waterloo, Iowa. Served in the fortieth, fortieth extra and forty-first general assemblies. A republican in politics.



E. M. LICHTY.—Representative, was born in Orange township, Blackhawk county, Iowa, February 2, 1867. When he was six months old his parents moved on the farm where he has lived continually ever since, and now owns the said farm. He received his education in the rural schools and business college at Waterloo; married in 1889 to Emma Miller of Summerset county, Penn. To this union were born seven children, one of whom died in infancy. He has made farming his life work, always raising and feeding a large number of hogs, besides dairying and cattle feeding. Has always been interested in the activities of his community. After being elected to the fortieth general assembly he resigned as president of the consolidated school board, secretary and treasurer of the telephone company (which office he held for twenty years), township trustee, and chairman of township farm bureau. The three sons and son-in-law are working the several farms consisting of 580 acres on a fifty-fifty basis. In May, 1921, his wife died and in December, 1922, he married Clara Miller of Waterloo, Iowa, who accompanied him to Des Moines during the present session. He expects to retire from active farm work after the present session has adjourned, and move to Waterloo where he has bought a home. A republican in politics.