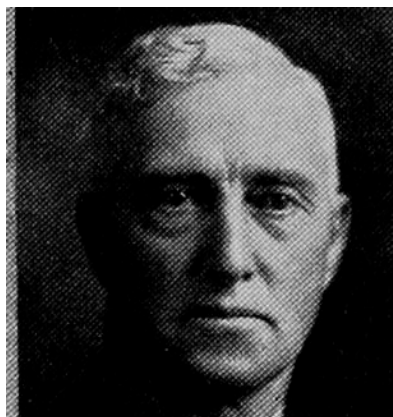
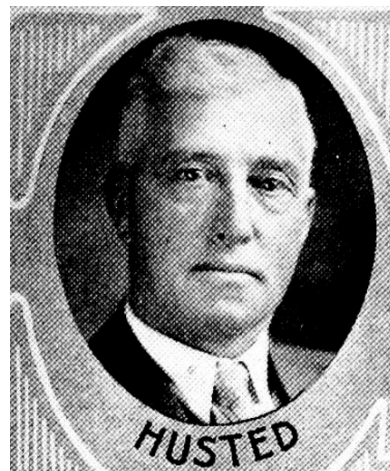




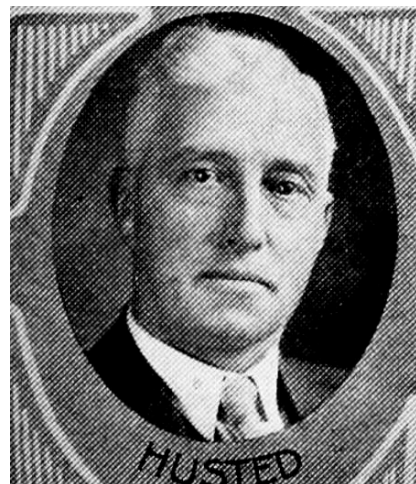
**HUSTED, Ora E., Truro** *Republican*  
16th Senatorial District—Adair and Madison Counties  
Born in Ohio township, Madison county, Iowa, March 20, 1876. Has spent all except seven years in the community in which he now resides. Was reared on a farm; actively engaged in farming and livestock raising. Received his education in the schools of that county. Was married January 23, 1899, to Etna E. Kale; father of three living children: Cresley, Esther, and Merrill. A member of the Methodist Episcopal church. Served on the official board for more than thirty years. A member of the county and state Sunday school associations, and a talented Sunday school and church speaker. Active in Hi. Y. and boys' club work, and farm bureau. Elected as representative from Madison county in 1930, and as senator in 1932 and 1936.



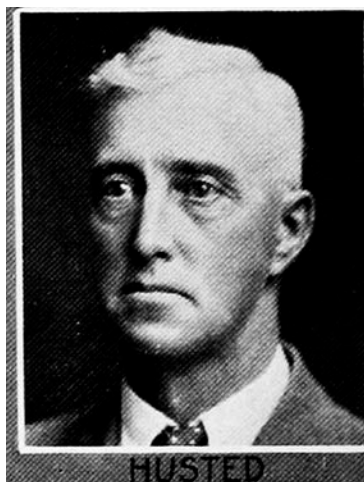
**ORA E. HUSTED, Truro.**—Senator from the sixteenth district, composed of Adair and Madison counties, was born in Ohio township, Madison county, March 20, 1876. Has spent his entire life except seven years in the community in which he now resides, receiving his education in the schools of that county. Was married January 23, 1899, to Etna E. Kale, and to this union were born four children: Cresley, Esther, Merrill, and Maurice. Maurice died at the age of four years. A member of the Methodist Episcopal church, having served on the official board for more than thirty years. A member of the county and state Sunday school associations. Has given Sunday school talks in almost every church in Madison county and in a great many churches in adjoining counties, often being called on to fill the pulpit for pastors of his county. Active in Hi. Y. and boys' club work. Active in farm bureau and local activities. Rendered a great many years of service on township school boards. Was on local finance board during World war. He was reared on a farm and has always been actively engaged in farming and stock raising. Elected as representative from Madison county in 1930 and as senator in 1932, and re-elected in 1936. A republican.



**ORA E. HUSTED, Truro.**—Senator from the sixteenth district, composed of Adair and Madison counties, was born in Ohio township, Madison county, March 20, 1876. Has spent his entire life except seven years in the community in which he now resides, receiving his education in the schools of that county. Was married January 23, 1899, to Etna E. Kale, and to this union were born four children: Cresley, Esther, Merrill, and Maurice. Maurice died at the age of four years. A member of the Methodist Episcopal church, having served on the official board for more than thirty years. A member of the county and state Sunday school associations. Has given Sunday school talks in almost every church in Madison county and in a great many churches in adjoining counties, often being called on to fill the pulpit for pastors of his county. Active in Hi. Y. and boys' club work. Active in farm bureau and local activities. Rendered a great many years of service on township school boards. Was on local finance board during World war. He was reared on a farm and has always been actively engaged in farming and stock raising. Elected as representative from Madison county in 1930 and as senator in 1932. A republican.



**ORA E. HUSTED, Truro.**—Senator from the sixteenth district, composed of Adair and Madison counties, was born in Ohio township, Madison county, March 20, 1876. Has spent his entire life except seven years in the community in which he now resides, receiving his education in the schools of that county. Was married January 23, 1899, to Etna E. Kale, and to this union was born four children: Cresley, Esther, Merrill, and Maurice. Maurice died at the age of four years. A member of the Methodist Episcopal church, having served on the official board for more than thirty years. A member of the county and state Sunday school associations. Has given Sunday school talks in almost every church in Madison county and in a great many churches in adjoining counties, often being called on to fill the pulpit for pastors of his county. Active in H. Y. and boys club work. Active in farm bureau and local activities. Rendered a great many years of service on township school boards. Was on local finance board during World War. He was reared on a farm and has always been actively engaged in farming and stock raising. Elected as representative from Madison county in 1930 and as senator in 1932. A republican.



**ORA E. HUSTED.**—Representative from Madison county, was born in Ohio township, Madison county, March 20, 1876. Has spent his entire life except seven years in the community in which he now resides. Received his education in the schools of that county. Was married January 23, 1899, to Etna E. Kale. To this union was born four children: Cresley, Esther, Merrill, and Maurice. Maurice died at the age of four years. A member of the Methodist Episcopal church, having served on the official board for more than thirty years. A member of the county and state Sunday school associations. Has given Sunday school talks in almost every church in Madison county and in a great many churches in adjoining counties, often being called on to fill the pulpit for pastors of his county. Active in Hi. Y. and boys club work. Active in farm bureau and local activities. Rendered a great many years of service on township school boards. Was on local finance board during World war. Was reared on a farm and has always been actively engaged in farming and stock raising, especially of hogs. A republican, serving first term as representative twenty-eighth district.