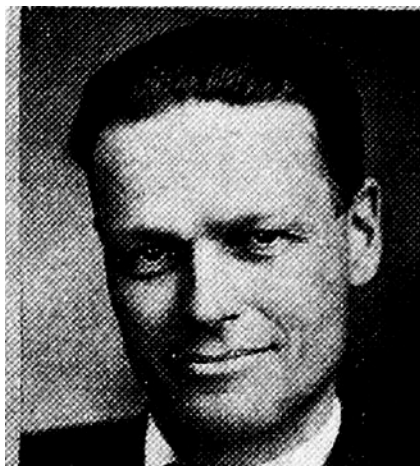




**GILLETTE, Lester S., Fostoria** *Democrat*  
47th Senatorial District—Clay, Dickinson, Emmet, Kossuth  
and Palo Alto Counties

Born in Iowa, and attended rural school, Milford high school. Iowa State College and University of Missouri. Has Master's degree. A member of the honorary fraternities Alpha Zeta, Delta Sigma Rho, Phi Kappa Phi and Sigma Xi. Member of the staff of Iowa State College experiment station 1914 to 1919. Farmer. Nationally known as judge of dairy cattle. Served Farm Debt Advisory Board, Dickinson County Farm Bureau, Milford township school board, C. D. Farm Service Company, Spencer Farm Loan Association and Iowa State Farm Bureau Executive Committee. Present member of the state advisory committee of the Farm Security Administration. Married Cecelia E. Murray in 1917; father of seven children: Jean, Mary, Riley, John, Charles, Rita and Frances. Elected to state senate in 1936.



**LESTER S. GILLETTE, Fostoria.**—Senator from the forty-seventh district, comprising Clay, Dickinson, Emmet, Kossuth and Palo Alto counties, was born in Iowa and attended rural schools, Milford high school, Iowa State college, and the University of Missouri, where he received a master's degree. A member of Alpha Zeta, Delta Sigma Rho, Phi Kappa Phi and Sigma Ki, fraternities. Member, staff of Iowa State college and experiment station 1914 to 1919. Has farmed since 1919. Has judged various breeds of dairy cattle, and served as chairman of Dickinson county farm debt advisory board, Dickinson county farm bureau, Milford Township school board and C-D. Farm Service Company. Former member county committee, agricultural programs 1934-1936, and of the Iowa farm bureau executive committee. Married Cecelia E. Murray in 1917, and they have seven children, Jean, Mary, Riley, John, Charles, Rita and Frances. Elected to the senate in 1936. A democrat.