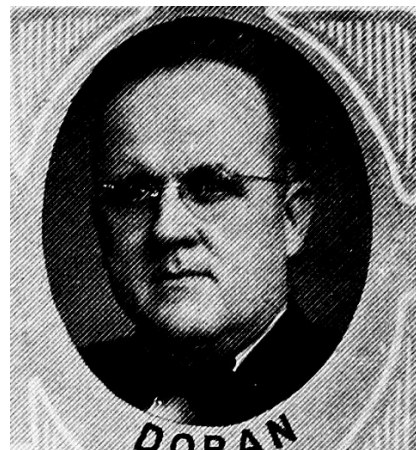




DORAN, L. H., Boone *Republican*
31st Senatorial District—Boone and Story Counties

Born at Beaver, Iowa, May 4, 1893, one of thirteen children born to Justin R. and Olive F. Doran. Resided on the farm of his parents except for the time spent in school and in the army. His father served as a member of the Iowa house of representatives from Boone county in the 30th, 31st, 32nd and 32nd extra general assemblies, and as a member of the state senate from the 31st senatorial district in the 35th and 36th general assemblies of Iowa. Graduate of the public school at Beaver, Iowa, and the Drake University law school in 1920. Married De Elda Kinson of Minneapolis, Minnesota; father of one daughter and two sons. Since 1920 he has been engaged in the practice of law in Boone, and is a member of the firm of Doran & Doran. Member of the American Legion, A. F. & A. M., B. P. O. E., K. P., A. T. O. fraternity, and the Lions Club. Served in the 43rd and 44th general assemblies, and was again elected senator in 1936.



L. H. DORAN, Boone.—Senator from the thirty-first district, composed of Boone and Story counties, was born at Beaver, Iowa, May 4, 1893; being one of thirteen children born to Justin R. and Olive F. Doran. Resided on the farm with his parents except for the time spent in school and in the army. His father served as a member of the Iowa house of representatives from Boone county in the thirtieth, thirty-first, thirty-second and thirty-second extra general assemblies, and as a member of the state senate from the thirty-first senatorial district in the thirty-fifth and thirty-sixth general assemblies of Iowa. Graduate of the public school at Beaver, Iowa, and the Drake University law school in 1920. Married De Elda Kinson of Minneapolis, Minnesota, and they have one daughter and two sons. Since 1920 he has been engaged in the practice of law in the city of Boone, Iowa, and is a member of the firm of Doran and Doran. Member of the American Legion, A. F. and A. M., B. P. O. E., K. P., A. T. O. fraternity, and the Lions club of Boone. Served as state senator in the forty-third and forty-fourth general assemblies, and was again elected senator in 1936. A republican.



L. H. DORAN.—Senator from Boone-Story, thirty-first senatorial district, was born at Beaver, Iowa, May 4, 1893. Is one of thirteen children born to Justin R. and Olive F. Doran. Resided on the farm with his parents except for the time spent in school and in the army. His father served as a member of the Iowa house of representatives from Boone county in the thirtieth, thirty-first, thirty-second and thirty-second extra general assemblies, and as a member of the state senate from the thirty-first senatorial district in the thirty-fifth and thirty-sixth general assemblies of Iowa. Graduate of the public school at Beaver, Iowa. Graduate of Drake University law school in 1920. October 10, 1917, enlisted in Battery C, 339th Field Artillery, and on April 12, 1918, while stationed at Camp Dodge, Iowa, was injured in a motor truck accident which resulted in his being confined to the army hospital until the 4th day of January, 1919. While a patient in the army hospital at Fort Des Moines, Iowa, in 1918, he met DeElda Kinson, of Minneapolis, Minn., a Red Cross nurse, whom he married following his graduation from the university in 1920. He has one daughter and two sons. Since 1920 has been engaged in the practice of law in the city of Boone, Iowa, and is a member of the firm of Baker, Doran and Boone. Has never held any other political office. Member of the American Legion, A. F. and A. M., B. P. O. E., A. T. O. fraternity, and the Lions club of Boone. Elected to state senate November 6, 1928. Republican in politics.



L. H. DORAN.—Senator from Boone-Story, thirty-first senatorial district, was born at Beaver, Iowa, May 4, 1893. Is one of thirteen children born to Justin R. and Olive F. Doran. Resided on the farm with his parents except for the time spent in school and in the army. His father served as a member of the Iowa house of representatives from Boone county in the thirtieth, thirty-first, thirty-second and thirty-second extra general assemblies, and as a member of the state senate from the thirty-first senatorial district in the thirty-fifth and thirty-sixth general assemblies of Iowa. Graduate of the public school at Beaver, Iowa. Graduate of Drake University Law School in 1920. October 10, 1917, enlisted in Battery C, 339th Field Artillery, and on April 12, 1918, while stationed at Camp Dodge, Iowa, was injured in a motor truck accident which resulted in his being confined to the army hospital until the 4th day of January, 1919. While a patient in the army hospital at Fort Des Moines, Iowa, in 1918, he met DeElda Kinson, of Minneapolis, Minn., a Red Cross nurse, whom he married following his graduation from the university in 1920. He has one daughter and two sons. Since 1920 has been engaged in the practice of law in the city of Boone, Iowa, and is a member of the firm of Baker and Doran. Has never held any other political office. Member of the American Legion, A. F. and A. M., B. P. O. E., A. T. O. fraternity, and the Lions club of Boone. Elected to state senate November 6th, 1928. Republican in politics.