



STEWART, E. L., Washington Washington County
Republican

Born on the farm on which he now lives, February 9, 1885. Attended rural school, graduated from Washington academy in 1902; spent two years in college at Monmouth, Illinois, and in 1909 was graduated from the agricultural department of the Iowa State College. In March, 1913, he was married to Jessie Mae White of Des Moines; father of four daughters. Farmer and livestock breeder. President of his school board for many years, president of farm bureau and cooperative shipping organization, and leader in boys' 4-H club work. A ruling elder in the United Presbyterian church. Serving fourth term in the legislature.



STEWART, E. L., Washington

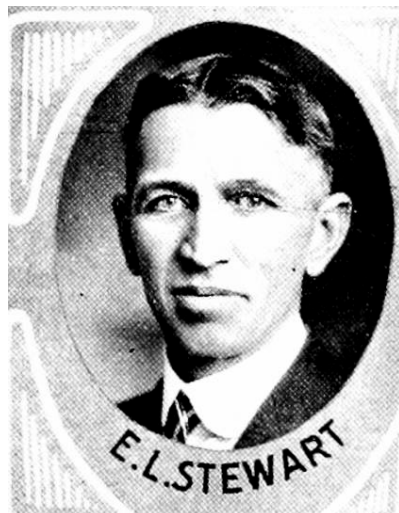
Washington County

Republican

Born on the farm on which he now lives, February 9, 1885. Attended rural school, graduated from Washington academy in 1902; spent two years in college at Monmouth, Illinois, and in 1909 was graduated from the agricultural department of the Iowa State College. In March, 1913, he was married to Jessie Mae White of Des Moines; father of four daughters. Farmer and livestock breeder. President of his school board for many years, president of farm bureau and cooperative shipping organization, and leader in boys' 4-H club work. A ruling elder in the United Presbyterian church. Serving third term in the legislature.



E. L. STEWART, Washington.—Representative from Washington county, was born on the same farm on which he now lives, February 9, 1885. Attended the rural school, graduated from Washington academy in 1902; spent two years in college at Monmouth, Illinois, and in 1909 was graduated from the agricultural department of the Iowa State College. In March, 1913, he was married to Jessie Mae White of Des Moines, and they are the parents of four girls. He has made farming his life work, always raising and feeding a large number of hogs and cattle. As president of his school board for many years, president of farm bureau and cooperative shipping organization, and leader in boys' 4-H club work, he has given much time to the development of his community. Is a ruling elder in the United Presbyterian church. Serving his second term in the legislature. A republican.



E. L. STEWART, Washington—Representative from Washington county, was born on the same farm on which he now lives, on February 9, 1885. Attended the rural school, graduated from Washington academy in 1902; spent two years in college at Monmouth, Illinois, and in 1909 was graduated from the agricultural department of the Iowa State College. In March, 1913, he was married to Jessie Mae White of Des Moines, and they are the parents of four girls. He has made farming his life work, always raising and feeding a large number of hogs and cattle. As president of his school board for many years, president of farm bureau and cooperative shipping organization, and leader in boys' 4-H club work, he has given much time to the development of his community. Is a ruling elder in the United Presbyterian church. Serving his first term in the legislature. A republican.