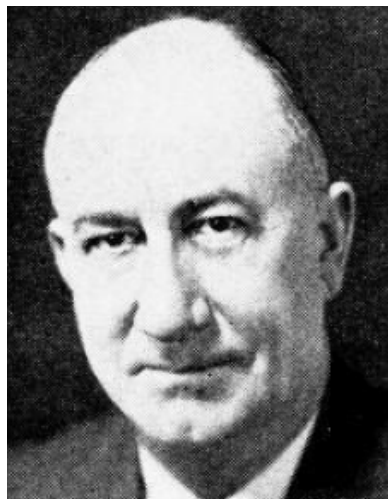


CORWIN, E. P., Fruitland

Republican

20th Senatorial District—Louisa and Muscatine Counties

Born one mile east of Fruitland in Fruitland township, Muscatine county, Iowa, July 15, 1883. Spent entire life in that community, with the exception of six years in the retail drug business. For the last thirty-four years has followed the growing and shipping of Muscatine Island products. Received education in Muscatine county schools and attended business and normal college. Was married to Jessie E. Smith of Chariton, Iowa, in 1908, they have two children, Donald F. and Marjorie La Rue, now Mrs. R. A. Weber. A member of the Methodist Episcopal church, belongs to all the Masonic orders, Eastern Star Order and Knights of Pythias, also a charter member of the Muscatine County Farm Bureau. Elected to the Senate in 1934; re-elected in 1938.

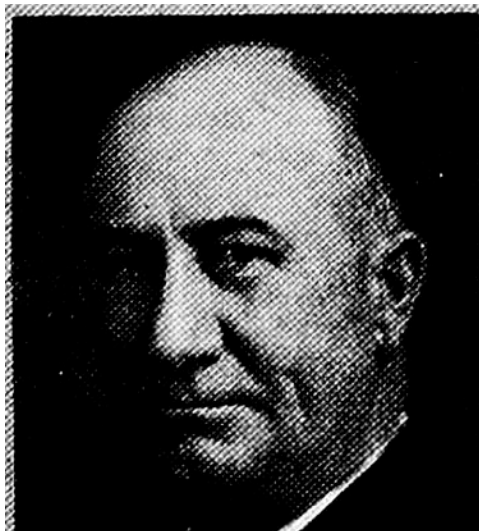


CORWIN, E. P., Fruitland

Republican

20th Senatorial District—Louisa and Muscatine Counties

Born in Fruitland township, Muscatine county, Iowa, July 15, 1883. Spent entire life, with the exception of six years, in the retail drug business in that community. For the last twenty-seven years has followed the growing and shipping of Muscatine island products. Received education in Muscatine county, and attended business and normal college. Was married in 1908 to Jessie E. Smith of Chariton, Iowa, and they have two children, Donald and Marjorie. A member of the Methodist Episcopal church, and belongs to all the Masonic orders. Elected to the senate in 1934; re-elected in 1938.



E. P. CORWIN, Fruitland.—Senator from the twentieth district, composed of Muscatine and Louisa counties, was born in Fruitland township, Muscatine county, Iowa, July 15, 1883. Spent entire life, with the exception of six years, in the retail drug business, in that community. For the past twenty-five years has followed the growing and shipping of Muscatine island products. Received education in Muscatine county, and attended business and normal college. Was married in 1908 to Jessie E. Smith of Chariton, Iowa, and they have two children, Donald and Marjorie. A member of the Methodist Episcopal church, and belongs to all the Masonic orders. Elected to the senate in 1934. A republican.



E. P. CORWIN, Fruitland.—Senator from the twentieth district, composed of Muscatine and Louisa counties, was born in Fruitland township, Muscatine county, Iowa, July 15, 1883. Spent entire life, with the exception of six years, in the retail drug business, in that community. For the past twenty-five years has followed the growing and shipping of Muscatine island products. Received education in Muscatine county, and attended business and normal college. Was married in 1908 to Jessie E. Smith of Chariton, Iowa, and they have two children, Donald and Marjorie. A member of the Methodist Episcopal church, and belongs to all the Masonic orders. Elected to the senate in 1934. A republican.