

ALESCH, Gustave, Marcus **Plymouth County**
Democrat

Born in Luxemburg in 1877. Educated in Luxemburg. Member of Catholic church and Knights of Columbus. Came to the U. S. when 18. Married Justine Kass, to which union seven children were born. After marriage, farmed first in Plymouth County; three years in Kansas; returned to Plymouth county, purchased a farm near Remsen, which he and his family now occupy. Past secretary of the Farmers' Elevator Co. of Marcus; secretary-treasurer of the shippers' association; president of Co-operative Community Oil Company of Marcus; and president of the rural independent school board of Remsen. Six years a member of the Plymouth county board of supervisors. Serving fifth term in legislature.



ALESCH, Gustave, Marcus

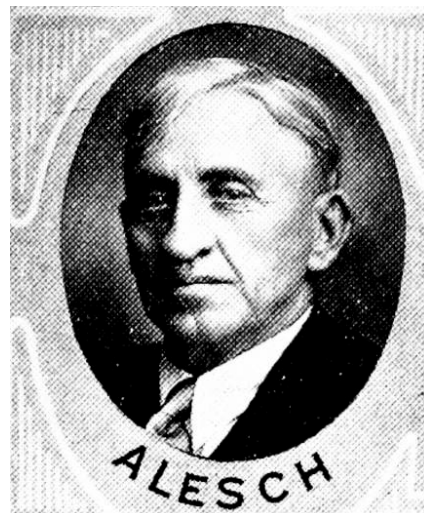
Plymouth County

Democrat

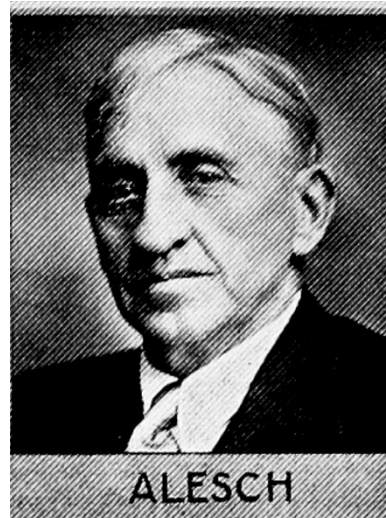
Born in Luxemburg in 1877. Educated in Luxemburg. Member of the Catholic church and the Knights of Columbus. Came to the United States when 18 years of age. United in marriage to Justine Kass, to which union seven children were born. After marriage, farmed first in Plymouth county; three years in Kansas; returned to Plymouth county, purchased a farm near Remsen, which he and his family now occupy. Has been secretary of the Farmer's Elevator Co. of Marcus; secretary-treasurer of the shippers' association; president of the Co-operative Community Oil Company of Marcus; and president of the board of the rural independent school district of Remsen. Six years a member of the Plymouth county board of supervisors. Serving fourth term in the legislature.



GUSTAVE ALESCH, Marcus.—Representative from Plymouth county, was born in Luxemburg in 1877, and was educated in the public schools of Luxemburg. He is a member of the Catholic church and a member of the Knights of Columbus. He came to the United States when 18 years of age. He was united in marriage to Justine Kass, to which union seven children were born. After his marriage, he first farmed in Plymouth county, then moved to Kansas, where he farmed three years, returning to Plymouth county, where he purchased a farm near Remsen, which he and his family now occupy. He has been secretary of the Farmers' Elevator Company of Marcus, and secretary-treasurer of the shippers' association. He has been president of the Co-operative Community Oil Company of Marcus, and has been president and is now a member of the rural independent school district of Remsen. Mr. Alesch served as a member of the Plymouth county board of supervisors for six years. Serving third term in the legislature. A democrat.



GUSTAVE ALESCH, Marcus.—Representative from Plymouth county, was born in Luxemburg in 1877, and was educated in the public schools of Plymouth county. He is a member of the Catholic church and a member of the Knights of Columbus. He came to the United States when 18 years of age. He was united in marriage to Justine Kass, to which union seven children were born. After his marriage, he first farmed in Plymouth county, then moved to Kansas, where he farmed three years, returning to Plymouth county, where he purchased a farm near Remsen, which he and his family now occupy. He has been secretary of the Farmers' Elevator Company of Marcus, and secretary-treasurer of the Shippers' Association. He is now president of the Co-operative Community Oil Company of Marcus, and president of the rural independent school district of Remsen. Mr. Alesch served as a member of the Plymouth county board of supervisors for six years. Serving second term in the legislature. A democrat.



GUSTAVE ALESCH, Marcus.—Representative from Plymouth county, was born in Luxemburg in 1877, and was educated in the public schools of Plymouth county. He is a member of the Catholic church and a member of the Knights of Columbus. He came to the United States when 18 years of age. He was united in marriage to Justine Kass, to which union seven children were born. After his marriage, he first farmed in Plymouth county, then moved to Kansas, where he farmed three years, returning to Plymouth county, where he purchased a farm near Remsen, which he and his family now occupy. He has been secretary of the Farmers' Elevator Company of Marcus, and secretary-treasurer of the Shippers' Association. He is now president of the Co-operative Community Oil Company of Marcus, and president of the Rural Independent school district of Remsen. Mr. Alesch served as a member of the Plymouth county board of supervisors for six years. Serving first term in the legislature. A democrat.