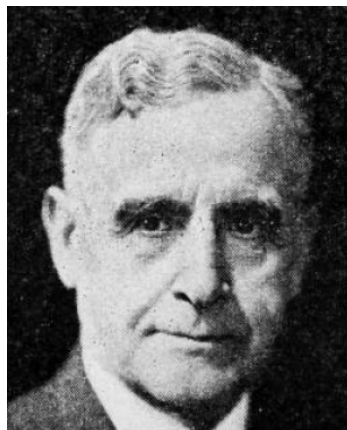


## **In Memoriam**

**WHITEHILL, B. C., Marshalltown Republican  
25th Senatorial District—Marshall County**

**He was for 20 years prior to 1936 Com-  
mandant of the Soldier's Home at Marshall-  
town. He was elected to the State Senate in  
1936 and was re-elected in 1940 and 1944. He was  
chosen as President Pro Tempore at the begin-  
ning of the 1945 session, but suffered a heart at-  
tack a few minutes before the session convened  
and passed away a short time later in a Des  
Moines hospital.**



**WHITEHILL, B. C., Marshalltown**      *Republican*

**28th Senatorial District—Marshall County**

Born on a farm near State Center, Iowa, March 6, 1875. Graduated from the State Center high school and attended Grinnell College. Enlisted in the forty-ninth Iowa infantry in the Spanish-American war, serving in Cuba. Married to Manie L. Vance, of Laurens, Iowa, April 5, 1900; father of two sons, Nelson and Joseph, both of Marshalltown. For a number of years he was in the mercantile business at State Center, where he served upon the town council and school board. Served for a time as county chairman of the republican central committee. In 1916 he was appointed by the board of control as commandant of the Iowa Soldiers' Home, which position he held for twenty years, or until 1936, when he was elected senator. A member of various Masonic orders and civic organizations.

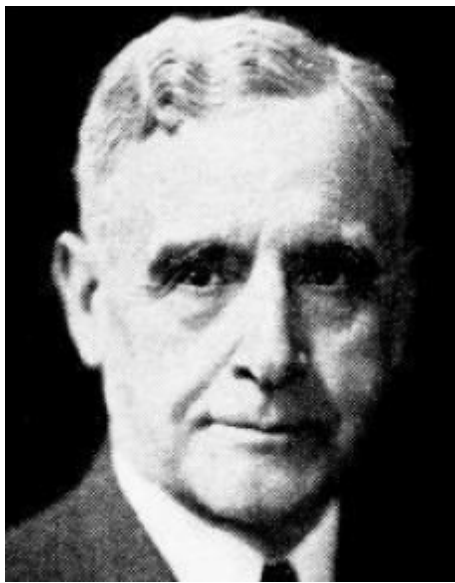


**WHITEHILL, B. C., Marshalltown**

*Republican*

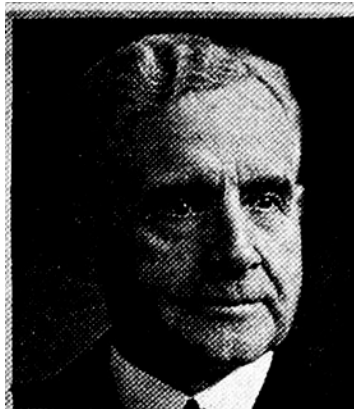
**28th Senatorial District—Marshall County**

Born on a farm near State Center, Iowa, March 6, 1875. Graduated from State Center high school and attended Grinnell College. Enlisted in the forty-ninth Iowa infantry in the Spanish-American war, serving in Cuba. Married to Manie L. Vance, of Laurens, Iowa, April 5, 1900; father of two sons, Nelson and Joseph, both of Marshalltown. For a number of years he was in the mercantile business at State Center, where he served upon the town council and school board. Served for a time as county chairman of the republican central committee. In 1916 he was appointed by the board of control as commandant of the Iowa Soldiers Home, which position he held for twenty years, or until 1936, when he was elected senator. A member of various Masonic orders and civic organizations.



**WHITEHILL, B. C., Marshalltown** *Republican*  
**28th Senatorial District—Marshall County**

Born on a farm near State Center, Iowa, March 6, 1875. Graduated from State Center high school and attended Grinnell College. Enlisted in the forty-ninth Iowa infantry in the Spanish-American war, serving in Cuba. Married to Manie L. Vance, of Laurens, Iowa, April 5, 1900; father of two sons, Nelson and Joseph, both of Marshalltown. For a number of years he was in the mercantile business at State Center, where he served upon the town council and school board. Served for a time as county chairman of the republican central committee. In 1916 he was appointed by the board of control as commandant of the Iowa Soldiers Home, which position he held for twenty years, or until 1936, when he was elected senator. A member of various Masonic orders and civic organizations.



B. C. WHITEHILL, Marshalltown.—Senator from the twenty-eighth district, Marshall county, was born on a farm near State Center, Iowa, March 6, 1875. Graduated from State Center high school and attended Grinnell college. Enlisted in the forty-ninth Iowa infantry in the Spanish-American war, serving in Cuba. Married Manie L. Vance, of Laurens, Iowa, April 5, 1900, and has two sons, Nelson and Joseph, both of whom reside in Marshalltown. For a number of years he was in the mercantile business at State Center, where he was a member of the town council and school board. Served for a time as county chairman of the republican central committee. In 1916 he was appointed by the board of control as commandant of the Iowa Soldiers Home, which position he held for twenty years, or until 1936 when he was elected senator. A member of various Masonic orders and civic organizations. A republican.