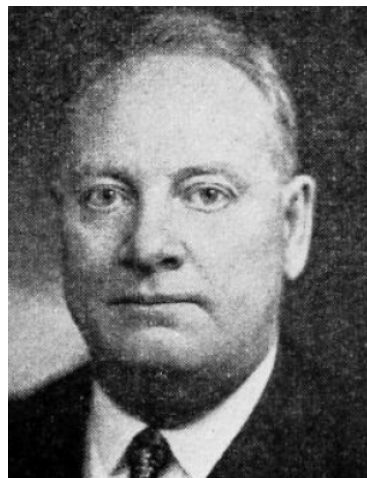


MOWRY, Ross R., Newton **Republican**
29th Senatorial District—Jasper County

Born on a farm near Baxter, Iowa, March 5, 1882. Graduated from Baxter high school in 1900 and from the law department of the State University of Iowa in 1903. Admitted to the Iowa bar in 1903 and located at Newton, where he has since been continuously engaged in the practice of law. Married to Edith Mathews, Newton, Iowa, 1908. Father of two daughters, Virginia and Gertrude. Was Jasper County Attorney, 1910-1914; Assistant to the Attorney General of Iowa in 1916; United States Attorney for the Southern District of Iowa, 1924-1932. A member of the Methodist church and the Masonic and the K. of P. lodges. Serving fifth session in Senate.



MOWRY, Ross R., Newton *Republican*
29th Senatorial District—Jasper County

Born on a farm near Baxter, Iowa, March 5, 1882. Graduated from Baxter high school in 1900 and from the law department of the State University of Iowa in 1903. Admitted to the Iowa bar in 1903 and located at Newton, where he has since been continuously engaged in the practice of law. Married to Edith Mathews, Newton, Iowa, 1908. Father of two daughters, Virginia and Gertrude. Was Jasper county attorney, 1910-1914; assistant to the attorney general of Iowa in 1916; United States attorney for the southern district of Iowa, 1924-1932. A member of the Methodist church and the Masonic and the K. of P. lodges. Serving second session in senate.



MOWRY, Ross R., Newton

Republican

29th Senatorial District—Jasper County

Born on a farm near Baxter, Iowa, March 5, 1882. Graduated from Baxter high school in 1900 and from the law department of the State University of Iowa in 1903. Admitted to the Iowa bar in 1903 and located at Newton, where he has since been continuously engaged in the practice of law. Married to Edith Mathews, Newton, Iowa, 1908. Father of two daughters, Virginia and Gertrude. Was Jasper county attorney, 1910-1914; assistant to the attorney general of Iowa in 1916; United States attorney for the southern district of Iowa, 1924-1932. A member of the Methodist church and the Masonic and the K. of P. lodges. Serving second session in senate.



MOWRY, Ross R., Newton

Republican

29th Senatorial District—Jasper County

Born on a farm near Baxter, Iowa, March 5, 1882. Graduated from Baxter high school in 1900 and from the law department of the State University of Iowa in 1903. Admitted to the Iowa bar in 1903 and located at Newton, where he has since been continuously engaged in the practice of law. Was Jasper county attorney, 1910-1914; assistant to the attorney general of Iowa in 1916; United States attorney for the southern district of Iowa, 1924-1932. A member of the Methodist church and the Masonic and the K. of P. lodges. Serving first term in state senate.