

**LATCHAW, Fred A., Wilton Muscatine County
Republican**

Son of Dr. John R. H. and Zella Coolidge Latchaw, born Barkeyville, Pennsylvania, December 8, 1883. Educated Chicago public schools, Findlay College and Defiance College in Ohio, Palmer University, Muncie, Indiana, his father being president of these colleges. His mother, a cousin of Calvin Coolidge, was a professor of romance languages. In 1906 was superintendent, Mailing Division, Muncie, Indiana; 1909, secretary, Warner Lamp Company, Davenport, and manager National Electric Lighting Company, Wilton. In 1921-1943 promoted and built electric farm transmission lines. June 14, 1913, married Elizabeth Holzhauer of Wilton. Children: Marjorie, teacher at Waterloo high; Fred, 1st Lt., U. S. Army; John, 1st Lt., U. S. Navy; James, sergeant, U. S. Air Corps—Italy; Mae, clerk—Chicago Stock Exchange. Member Presbyterian church, Wilton firemen, Masonic lodge, Knights of Pythias, Eastern Star. Served in 47th, 48th, 49th, 50th, 50th Extra, and 51st legislative sessions.



LATCHAW, Fred A., Wilton Muscatine County

Republican

Son of Dr. John R. H. and Zella Coolidge Latchaw, born Barkeyville, Pennsylvania, December 8, 1883. Educated Chicago public schools, Findlay College and Defiance College in Ohio, Palmer University, Muncie, Indiana, his father being president of these colleges. His mother, a cousin of Calvin Coolidge, was a professor of romance languages. In 1906 was superintendent, Mailing Division, Muncie, Indiana; 1909, secretary, Warner Lamp Company, Davenport, and manager National Electric Lighting Company, Wilton. In 1921-1936 promoted and built electric farm transmission lines. June 14, 1913, married Elizabeth Holzhauser of Wilton. Children: Marjorie, instructor in I. S. T. C.; Fred, Corporal in Officers' Training, U. S. Army; John, Ensign U. S. Navy; James, Private U. S. Army, and Mae, public school teacher. Member Presbyterian church, Wilton firemen, Masonic lodge, Knights of Pythias, Eastern Star. Served in 47th, 48th, 49th and 50th legislative sessions.



LATCHAW, Fred A., Wilton Muscatine County
Republican

Son of Dr. J. R. H. and Zella Coolidge Latchaw, born in Barkeville, Pa., Dec. 8, 1883. Attended schools at Chicago, Ill., Findlay and Defiance, Ohio, Findlay College, Defiance College and Palmer University, Muncie, Ind. Salesman at Muncie, Ind., then superintendent of mails in Federal building. In 1909 became secretary of Warner Lamp Company, Davenport, Iowa, later manager of Warner Arc Lamp Co., at Wilton. In 1914 incorporated National Electric Lighting Co., of Wilton. In 1921 sold this business and confined all of his time to contracting and building electric farm transmission and distributing systems. June 14, 1913, married Elizabeth B. Holzhauser. Children: Marjorie, Fred, John, James and Mae. Member Presbyterian church, Masonic lodge, Eastern Star, Knights of Pythias, Wilton fireman. Served in the 47th, 48th and 49th legislative sessions.

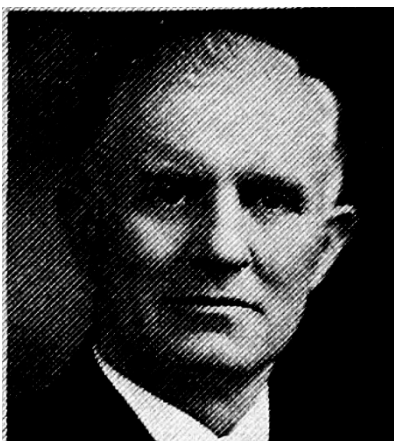


LATCHAW, Fred A., Wilton

Muscatine County

Republican

A son of Dr. John R. H. and Zella Coolidge Latchaw, born in Barkeyville, Pennsylvania, December 8, 1883. He attended school at Findlay, Ohio, and Chicago, Illinois; Findlay College and Defiance College, Ohio, and Palmer University, at Muncie Indiana. For two years he was assistant manager of the Muncie Shoe Store, later superintendent of mails, Muncie, Indiana. In 1909, he moved to Wilton, Iowa, to engage in the manufacture of farm electric plants. Has constructed many miles of electric transmission lines and electrified more than 600 farm homes. On June 14, 1913, he was married to Elizabeth B. Holzauer. He is the father of five children: Marjorie, Frederic, John, James, and Elda Mae. A member of the Presbyterian church, Masonic lodge, Eastern Star Order and Knights of Pythias. Serving second term in the legislature.



FRED A. LATCHAW, Wilton.—Representative from Muscatine county, the son of Dr. John R. H. and Zella Coolidge Latchaw, was born in Barkeyville, Pennsylvania, December 8, 1883. He attended the city schools at Findlay, Ohio and Chicago, Illinois. Completing his education at Findlay College, and Defiance College in Ohio and Palmer University at Muncie, Indiana; his father being president of these three schools for many years. His mother was professor of French languages at Palmer and she was a cousin of Calvin Coolidge. For two years he was a shoe salesman, leaving that position to accept the superintendency of mails in the federal building at Muncie, Indiana. In the year 1909, he moved to Wilton, Iowa, where he engaged in the electrical business, manufacturing and selling farm electric plants under the corporate name of the National Electric Lighting Company. Later he became interested in the construction of farm transmission lines and constructed and built many miles of lines and electrified more than six hundred farm homes in eastern Iowa, and western Illinois. On June 14, 1913, he married Elizabeth B. Holzhauer, a teacher in the Wilton public schools and they have five children, Marjorie, Frederic, John, James and Elda Mae. Member of the Presbyterian church and belongs to the Masonic lodge and the Eastern Star. Serving first term in the legislature. A republican.