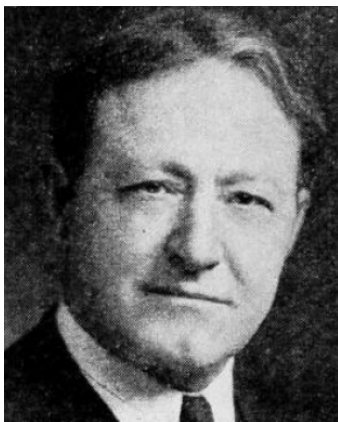




**HEFFNER, John S., Webster City
Hamilton County**

Republican

Representative Heffner, 62, is a farmer and stockman. He was born in Webster county, January 11th, 1883, the oldest son of the late Dr. Samuel Heffner, who came to Iowa from Pennsylvania in 1855. Received early education in rural schools, later going to Tobin College at Fort Dodge, Iowa, graduating with the class of 1900. Also attended University of Iowa. Twelve years banking experience with the State Bank of Williams, the First National Bank of Fort Dodge, and the Duncombe Savings Bank. Taught school for a time. He is a member of the Hamilton County Board of Education; twelve years on the Blairsburg Consolidated School Board, President the last six years. Member of Board of Trustees and affiliated with First Congregational church of Webster City. Married to Iva Mae Bartlett of Hamilton County. Father of four daughters, Mrs. Philip L. Spencer, Baltimore, Maryland, Miss Dorothy Heffner, St. Paul, Minnesota, and Ramona and Beth, at home. Serving fourth term.



HEFFNER, John S., Webster City
Hamilton County
Republican

Representative Heffner, 58, is a farmer and stockman. He was born in Webster county, the oldest son of the late Dr. Samuel Heffner, who came to Iowa in 1855. Received early education in rural schools, later going to Tobin College at Fort Dodge, Iowa, graduating with the class of 1900. Also attended Iowa University. Twelve years of banking experience with the State Bank of Williams, the First National Bank of Fort Dodge, and the Duncombe Saving Bank. Taught school for a time. A member of the Hamilton county board of education; eight years on the Blairsburg consolidated school board, president the last four years. Member of Board of Trustees and affiliated with First Congregational church of Webster City. Married to Iva Mae Bartlett of Hamilton county. Father of four daughters, Mrs. Philip L. Spencer, St. Paul, Minnesota, and Dorothy, Ramona and Beth, at home. Serving third term.



HEFFNER, John S., Webster City

Hamilton County

Republican

Representative Heffner, 58, is a farmer and stockman. He was born in Webster county, the oldest son of the late Dr. Samuel Heffner, who came to Iowa in 1855. Received early education in rural schools, later going to Tobin College at Fort Dodge, Iowa, graduating with the class of 1900. Also attended Iowa University. Twelve years of banking experience with the State Bank of Williams, the First National Bank of Fort Dodge, and the Duncombe Saving Bank. Taught school for a time. A member of the Hamilton county board of education; eight years on the Blairsburg consolidated school board, president the last four years. Member of Board of Trustees and affiliated with First Congregational Church of Webster City. Married to Iva Mae Bartlett of Hamilton county. Father of four daughters, Charlotte, Dorothy, Ramona and Beth.



HEFFNER, John S., Webster City

Hamilton County

Republican

Representative Heffner, 56, is a farmer and stockman. He was born in Webster county, the oldest son of the late Dr. Samuel Heffner, who came to Iowa in 1855. Received early education in rural schools, later going to Tobin College at Fort Dodge, Iowa, graduating with the class of 1900. Also attended Iowa University. Twelve years of banking experience with the State Bank of Williams, the First National Bank of Fort Dodge, and the Duncombe Savings Bank. Taught school for a time. A member of the Hamilton county board of education; eight years on the Blairsburg consolidated school board, president the last four years. Married to Iva Mae Bartlett of Hamilton county. Father of four daughters, Charlotte, Dorothy, Ramona and Beth.