

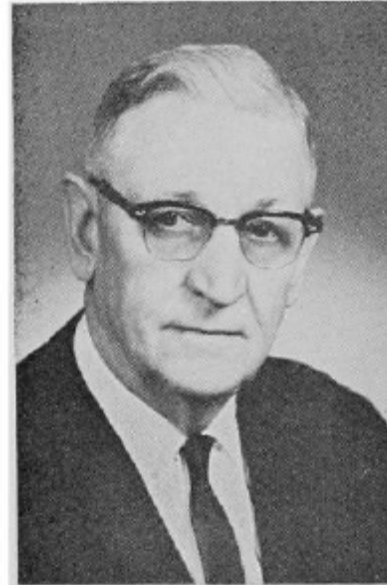
**HANSON, Fred B., Osage
Howard-Mitchell Counties**
Republican

Born at Inwood, Iowa, November 20, 1888. Son of pioneer parents. Educated in Lyon County, Lenox College, and Iowa State University. Farmed 12 years with late brother, A. C. Hanson at Inwood. Extension director Harrison County 11½ years, project manager Granger Homesteads seven years, same at Waukegan, Illinois, five years. Member Methodist Church, Rotary, Masons, Eastern Star, Farm Bureau, Historical Society, Illinois Reserve Militia during World War II. active in school community and cooperative enterprises at Inwood, Logan, Granger and Osage. Red Cross campaign one year, school secretary 15 years, general agent Farm Bureau insurance six years. Secretary Manager Mitchell County Fair past 14 years. Married Anna Thorvaldsen 1915, who passed away 1951. Three sons: Merle, at Osage, war veteran and Lt. Colonel in Army Reserve; Virgil, a personnel director Gulf Oil Co. at Houston, Texas; and Delmar, a division director TWA Air Lines overhaul base at Kansas City. Seven grandchildren. Has traveled extensively in U. S. and Europe. Married Grace M. Layton January 12, 1963. Served in 59th, 60th, 60th Extra Sessions, and 62nd. Now serving fourth term and 4-year appointment by governor to the State Capitol-Planning Commission.



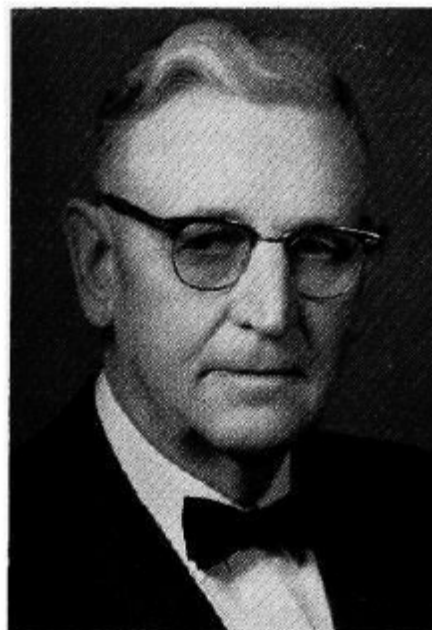
**HANSON, Fred B., Osage
Howard-Mitchell Counties
Republican**

Born at Inwood, Iowa, November 20, 1888. Son of pioneer parents. Educated in Lyon County, Lenox College, and Iowa State University. Farmed 12 years with late brother, A. C. Hanson at Inwood. Extension director Harrison County 11½ years, project manager Granger Homesteads seven years, same at Waukegan, Illinois, five years. Member Methodist Church, Rotary, Masons, Eastern Star, Farm Bureau, Historical Society, Illinois Reserve Militia during World War II. Active in school community and cooperative enterprises at Inwood, Logan, Granger and Osage. Red Cross campaign one year, school secretary 15 years, general agent Farm Bureau insurance six years. Secretary Manager Mitchell County Fair past 12 years. Married Anna Thorvaldsen 1915, who passed away 1951. Three sons: Merle, farming at Inwood, war veteran and Lt. Colonel in Army Reserve; Virgil, a personnel director Gulf Oil Co. at Houston, Texas; and Delmar, a division director TWA Air Lines at Kansas City. Seven grandchildren. Has traveled extensively in U. S. and Europe. Married Grace M. Layton January 12, 1963. Served in 59th 60th and 60th Extra Session. Now serving third term.



**HANSON, Fred B., Osage
Mitchell County
Republican**

Born at Inwood, Iowa, son of Iowa pioneers, Henry J. and Olive Hanson, Nov. 20, 1888. Educated in Lyon County, Lenox College, and Iowa State University, class of 1913. Farmed 12 years with brother, Arthur, at Inwood. Extension director Harrison County 11½ years, project manager Granger Homesteads seven years, same at Lake County Homesteads, Waukegan, Ill., five years. Member and official Methodist Church, Masons, Rotary, State Historical Society, National Travel Club, Farm Bureau, Illinois Reserve Militia World War II, school board secretary 15 years, U. S. Weather Bureau local observer 19 years. General agent Farm Bureau Insurance, Mitchell County, 1949 to 1955, Red Cross campaign chairman one year, secretary-manager Mitchell County Fair eight years. In 1915 married Anna Thorvaldsen, who died in February, 1951. Three sons: Merle, a four-year war veteran and reserve officer, farming at Osage; Virgil, an employee-relations director, and Delmar, a standards and methods engineer, and two-year war veteran, both at Kansas City. Seven grandchildren. Traveled in 47 states and provinces, 12 countries in Europe. Jan. 12, 1963, married Mrs. Grace Layton of La-Crosse, Wis. Serving second term.





**HANSON, Fred B., Osage
Mitchell County
Republican**

Born at Inwood, son of Iowa pioneers, Henry J. and Olive Hanson, Nov. 20, 1888. Educated in Lyon County, Lenox College, and Iowa State University, class of 1913. Farmed 12 years with brother Arthur at Inwood. Extension director Harrison county 11½ years, project manager Granger Homesteads seven years, same at Lake County Homesteads, Waukegan, Ill., five years. Member and official Methodist Church, Masons, Rotary, State Historical Society, National Travel Club, Farm Bureau, Illinois Reserve Militia World War II, school board secretary 15 years. General agent Farm Bureau Insurance, Mitchell County, 1949 to 1955, Red Cross campaign chairman one year, secretary-manager Mitchell County Fair six years. In 1915 married Anna Thorvaldsen, who died in February, 1951. Three sons: Merle, a four year war veteran and reserve officer, farming at Osage; Virgil, an employee-relations director, and Delmar, a standards and methods engineer, and two-year war veteran, both at Kansas City. Seven grandchildren. Travelled in 47 states and provinces, 12 countries in Europe. Serving first term.