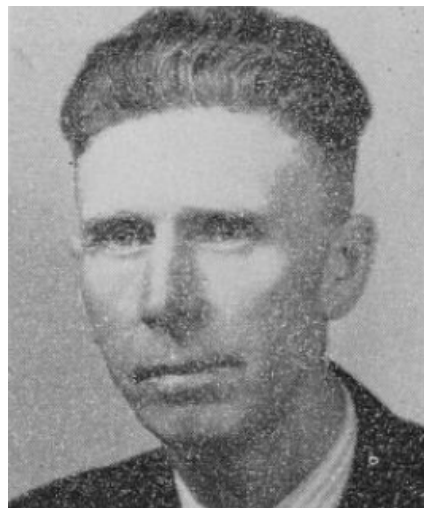


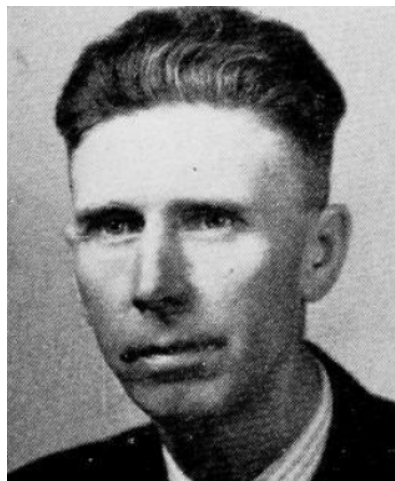
**SIEFKAS, Henry Osceola Clarke County
Republican**

Born on a farm near Osceola, August 27, 1897, son of R. F. and Hannah Siefkas. Received his education in the public schools. Engaged in farming. Married to Eula Kelley, May, 1922; has two living daughters: Marcia and Enid, the youngest daughter, Myrna, having passed away July 7, 1945. Served as township assessor, trustee, member of the school board, director of Clarke County Farm Bureau for 11 years, and is a member of county board of education. Member of Methodist Church and I.O.O.F. lodge. Serving sixth term.



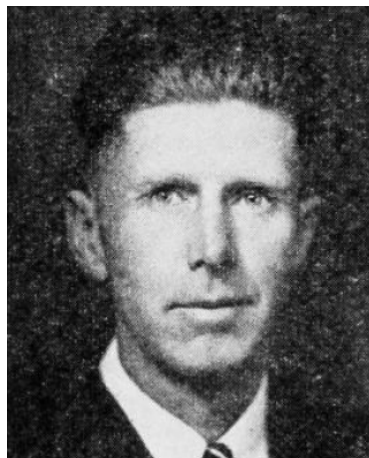
SIEFKAS, Henry, Osceola Clarke County
Republican

Born on a farm near Osceola, August 27, 1897, son of R. F. and Hannah Siefkas. Received his education in the public schools. Engaged in farming. Married to Eula Kelley, May, 1922; has two living daughters: Marcia and Enid, the youngest daughter, Myrna, having passed away July 7, 1945. Served as township assessor, trustee, member of the school board, director of Clarke County Farm Bureau for 11 years, and is a member of county board of education. Member of Methodist church and I.O.O.F. lodge. Serving fifth term.



SIEFKAS, Henry, Osceola Clarke County
Republican

Born on a farm near Osceola, August 27, 1897, son of R. F. and Hannah Siefkas. Received his education in the public schools. Engaged in farming. Married to Eula Kelley, May, 1922; father of three daughters: Marcia, Enid and Myrna. Served as Township Assessor, Trustee, member of the School Board and member of the County Board of Education. Has been director of Clarke County Farm Bureau for 11 years. Member of Methodist church and I.O.O.F. lodge. Serving fourth term.



SIEFKAS, Henry, Osceola **Clarke County**

Republican

Born on a farm near Osceola, August 27, 1897, son of R. F. and Hannah Siefkas. Received his education in the public schools. Engaged in farming. Married to Eula Kelley, May, 1922; father of three daughters: Marcia, Enid and Myrna. Served as township assessor, trustee, member of the school board and member of the county board of education. Has been director of Clarke County Farm Bureau for eleven years. Member of Methodist church and I. O. O. F. lodge. Serving third term.

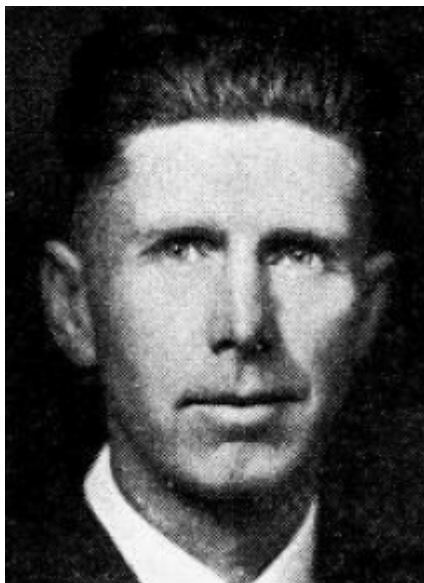


SIEFKAS, Henry, Osceola

Clarke County

Republican

Born on a farm near Osceola, August 27, 1897, son of R. F. and Hannah Siefkas. Received his education in the public schools. Engaged in farming. Married to Eula Kelley, May, 1922; father of three daughters: Marcia, Enid and Myrna. Served as township assessor, trustee, member of the school board and member of the county board of education. Has been director of Clarke County Farm Bureau for eleven years. Member of Methodist church and I. O. O. F. lodge. Serving second legislative term.



SIEFKAS, Henry, Osceola

Clarke County

Republican

Born on a farm near Osceola, August 27, 1897, son of R. F. and Hannah Siefkas. He received his education in the public schools. Engaged in farming. Married to Eula Kelley, May, 1922; father of three daughters: Marcia, Enid and Myrna. Served as township assessor, trustee and member of the school board. Has been director of Clarke County Farm Bureau for nine years. Member of Methodist church and I. O. O. F. lodge. Serving first legislative term.