

FOSTER, Harlan C., Mount Pleasant
Republican

**10th Senatorial District—Henry and
Washington Counties**

Born near Hastings, Nebr., March 10, 1886. Son of Charles and Arminda Foster. Educated in rural school and a graduate of the Mt. Pleasant academy. Taught in public schools three years. Married in 1909 at Sinton, Texas, to Nellie L. Ross. Has three children, Frances, Floyd and Dorothy. Lives on the farm which has been in the family since 1853. Engaged in general farming and livestock feeding. Has served on Olds Consolidated School board. Member of the Methodist Church and an honorary member of the Mount Pleasant Kiwanis club. Elected to the Iowa House of Representatives in 1936. Re-elected in 1938 and 1940. Elected to the Iowa Senate in 1942 and 1946.



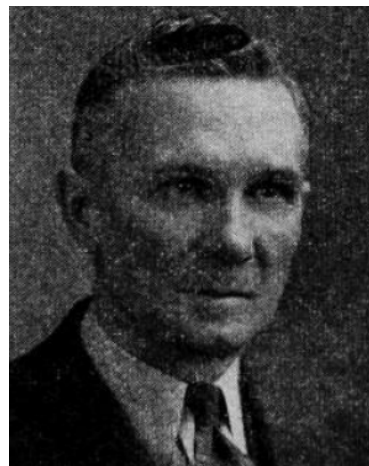
FOSTER, Harlan C., Mount Pleasant
Republican
10th Senatorial District—Henry and
Washington Counties.

Born near Hastings, Nebr., March 10, 1886. Son of Charles and Arminda Foster. Educated in rural school and a graduate of the Mt. Pleasant academy. Taught in public schools three years. Married in 1909 at Slnton, Texas, to Nellie L. Ross. Has three children, Frances, Floyd and Dorothy. Lives on the farm which has been in the family since 1853. Engaged in general farming and livestock feeding. Has served on Olds Consolidated School board. Member of the Methodist church, and an Honorary Member of the Mt. Pleasant Kiwanis club. Elected to the Iowa House of Representatives in 1936. Reelected in 1938 and 1940. Elected to the Iowa State Senate in 1942 and 1946.



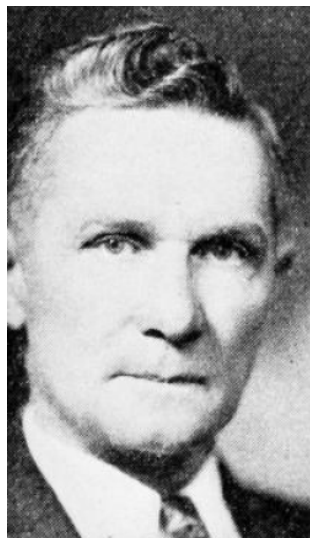
**FOSTER, Harlan C., Mount Pleasant Republican
10th District—Henry and Washington Counties**

Born near Hastings, Nebr., March 10, 1886. Son of Charles and Arminda Foster. Educated in rural school and a graduate of the Mt. Pleasant Academy. Taught in public schools three years. Married in 1909 at Sinton, Texas, to Nellie L. Ross. Has three children, Frances, Floyd and Dorothy. Lives on the farm which has been in the family since 1853. Engaged in general farming and livestock feeding. Has served on Olds Consolidated School Board. Member of the Methodist church, and an Honorary Member of the Mt. Pleasant Kiwanis Club. Elected to the Iowa House of Representatives in 1936. Re-elected in 1938 and 1940. Elected to the Iowa State Senate in 1942.



FOSTER, Harlan C., Mount Pleasant *Republican*
10th District—Henry and Washington Counties

Born near Hastings, Nebraska, March 10, 1886. Son of Charles and Arminda Foster. Educated in rural school and a graduate of the Mt. Pleasant Academy. Taught in public schools three years. Married and has three children. Lives on a farm which has been in the family since 1853. Carries on general farming and livestock feeding. Elected to legislature in 1936, re-elected in 1938 and 1940. Elected to the senate in 1942.

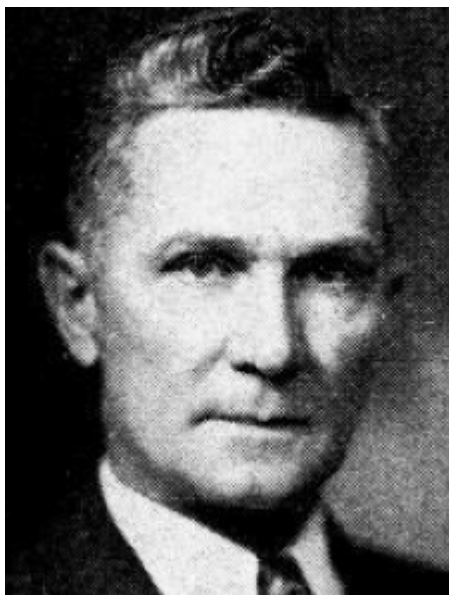


FOSTER, Harlan C., Mount Pleasant

Republican

Henry County

Born near Hastings, Nebraska, March 10, 1886. Son of Charles and Arminda Foster. Educated in rural school and a graduate of the Mt. Pleasant Academy. Taught in public schools three years. Married and has three children. Lives on a farm which has been in the family since 1853. Carries on general farming and livestock feeding. Elected to legislature in 1936, re-elected in 1938 and 1940.

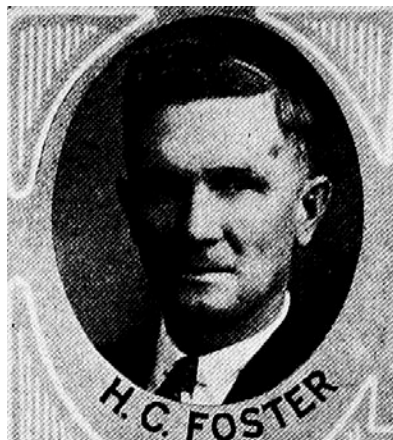


FOSTER, Harlan C., Mount Pleasant

Henry County

Republican

Born near Hastings, Nebraska, March 10, 1886. Son of Charles and Arminda Foster. Educated in rural school and a graduate of the Mt. Pleasant Academy. Taught in public schools three years. Married and has three children. Lives on a farm which has been in the family since 1853. Carries on general farming and livestock feeding. Elected to legislature in 1936, re-elected in 1938.



HARLAN C. FOSTER, Mt. Pleasant.—Representative from Henry county, was born March 10, 1886 on a farm near Hastings, Nebraska, the son of Charles and Arminda (Brown) Foster. Lived five years in Thomas county, Kansas where his father took a homestead, then moved to Henry county, Iowa in 1891 where he received his education in rural school and was graduated from Mt. Pleasant academy. Taught one year in Henry county and two years near Hastings, Nebraska. Married to Nellie L. Ross, September 26, 1909, at Corpus Christi, Texas, and has three children, Mrs. Swiers Brown, Floyd and Dorothy. Farmed three years near Panama, Nebraska then moved to the farm in Henry county which his grandfather bought in 1853, and which has been owned by members of the family since that time, where he has been engaged in general farming, and feeding of live stock. Has served as director and secretary of schools and co-operatives. Elected to the legislature in 1936. A republican.