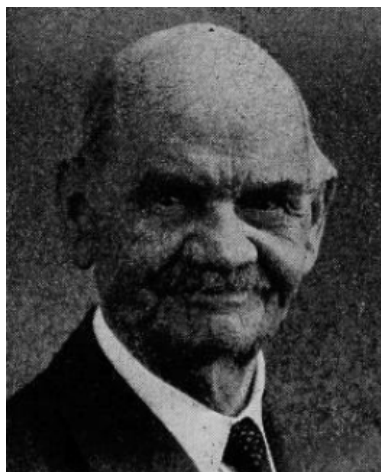


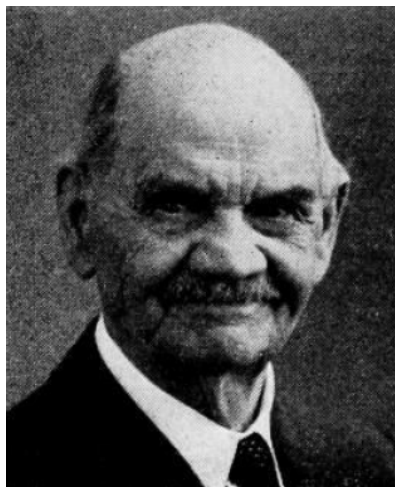
**AVERY, Amphas H., Spencer, Clay County**  
Republican

Born near Excelsior, Richland county, Wisconsin, May 20, 1870. Attended rural schools and Cedar Valley seminary, Osage, Iowa. In 1889, moved to South Dakota, taught in rural and town schools at Ashton and Woonsocket. Moved to Spencer, Iowa, in 1901; superintendent of city schools there until 1915. In life insurance business from 1915 to present. Served one term as mayor of Spencer. Married first to Grace Cornwall (deceased). To this union one child was born, Theta Avery Tucker, of Minneapolis. Married Grace Dunham and to this union three children were born, two of whom are living, Alden D. and Barbara. One daughter, Margaret Avery Dunning, died in 1931 leaving three children. The eldest, Robert Douglas Dunning, was killed in action in Normandy July 3, 1944, at the age of 19. Served in 44th, 45th Extra, 46th, 46th Extra, 48th, 49th, 50th, 50th Extra, 51st, 52nd, 52nd Extra and 53rd General Assemblies. Speaker pro tem, 50th. Member of Congregational Church and a Mason.



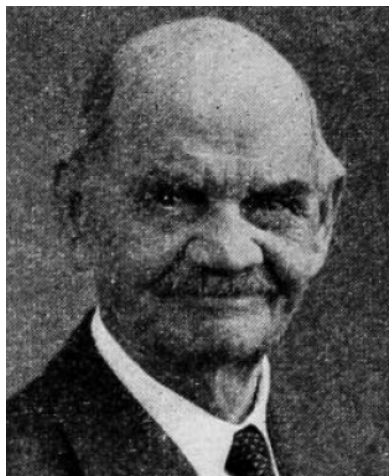
**AVERY, Amplias H., Spencer Clay County  
Republican**

Born near Excelsior, Richland county, Wis., May 20, 1870. Attended rural schools and Cedar Valley seminary, Osage, Iowa. In 1889, moved to South Dakota, taught in rural and town schools at Ashton and Woonsocket. Moved to Spencer, Iowa, in 1901, was superintendent of city schools there until 1915. In life insurance business from 1915 to present. Served one term as mayor of Spencer. Married first to Grace Cornwall (deceased). To this union one child was born, Theta Avery Tucker, of Minneapolis. Married Grace Dunham, and to this union three children were born, two of whom are living, Alden D., and Barbara. One daughter, Margaret Avery Dunning, died in 1931 leaving three children. The eldest, Robert Douglas Dunning, was killed in action in Normandy July 3, 1944, at the age of 19. Served in 44th, 45th Extra, 46th, 46th Extra, 48th, 49th, 50th, 50th Extra, 51st and 52nd General Assemblies. Speaker pro tem, 50th. Member of Congregational church and a Mason.



**AVERY, Amplias, Spencer**                      **Clay County**  
**Republican**

Born near Excelsior, Richland county, Wis., May 20, 1870. Attended rural schools and Cedar Valley Seminary, Osage, Iowa. In 1889, moved to South Dakota, taught in rural and town schools at Ashton and Woonsocket. Moved to Spencer, Iowa, in 1901, was Superintendent of City Schools there until 1915. In life insurance business from 1915 to present. Served one term as Mayor of Spencer. Married first to Grace Cornwall (deceased). To this union one child was born, Theta Avery Tucker, of Minneapolis. Married Grace Dunham, and to this union three children were born, two of whom are living, Alden D., and Barbara. One daughter, Margaret Avery Dunning, died in 1931 leaving three children. The eldest, Robert Douglas Dunning, was killed in action in Normandy July 3, 1944, at the age of 19. Served in 44th, 45th Extra, 46th, 46th Extra, 48th, 49th, 50th, 50 Extra and 51st General Assemblies. Speaker pro tem, 50th. Member of Congregational church and a Mason.

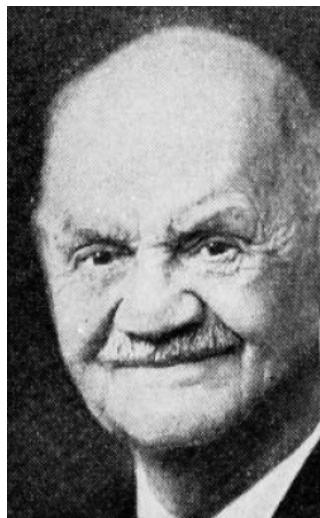


**AVERY, Amplias, Spencer**

**Clay County**

*Republican*

Born near Excelsior, Richland county, Wis., May 20, 1870. Attended rural schools and Cedar Valley Seminary, Osage, Iowa. In 1889, moved to South Dakota, taught in rural and town schools at Ashton and Woonsocket. Moved to Spencer, Iowa, in 1901, was superintendent of city schools there until 1915. In life insurance business from 1915 to present. Served one term as mayor of Spencer. Married first to Grace Cornwall (deceased). To this union one child was born, Theta Avery Tucker, of Minneapolis. Married Grace Dunham, and to this union three children were born, two of whom are living: Alden D., and Barbara. Served in 44th, 45th Extra, 46th, 46th Extra, 48th, 49th and 50th General Assemblies. Speaker pro tem 50th. Member of Congregational church and a Mason.



**EVERY, Amplias Hale, Spencer**

**Clay County**

***Republican***

Born near Excelsior, Richland county, Wis., May 20, 1870. Attended rural schools and Cedar Valley Seminary, Osage, Iowa. In 1889, moved to South Dakota, taught in rural and town schools at Ashton and Woonsocket. Moved to Spencer, Iowa, in 1901, was superintendent of city schools there until 1915. In life insurance business from 1915 to present. Served one term as mayor of Spencer. Married first to Grace Cornwall (deceased). To this union one child was born, Theta Avery Tucker, of Minneapolis, Married Grace Dunham, and to this union three children were born, two of whom are living; Alden D., and Barbara. Served in 44th, 45th Extra, 46th, 48th and 49th General Assemblies. Member of Congregational church and a Mason.



**EVERY, Amphas Hale, Spencer**  
*Republican*

**Clay County**

Born near Excelsior, Richland county, Wisconsin, May 20, 1870. Attended the rural schools of his home county, and Cedar Valley Seminary, Osage, Iowa. In 1889, he moved to South Dakota, taught in rural schools and in the town schools at Ashton and Woonsocket. Moved to Spencer, Iowa, in 1901, was superintendent of city schools there until 1915. In life insurance business from 1915 to present. Served one term as mayor of Spencer, during which time he was president of the Iowa League of Municipalities. Married first to Grace Cornwall (deceased). To this union one child was born, Theta Avery Tucker, of Minneapolis. Married to Grace Dunham, and to this union three children were born, two of whom are living: Alden D., and Barbara. Served in the 44th, the 45th Extra, 46th and 48th General Assemblies. A member of the Congregational church and a Mason.

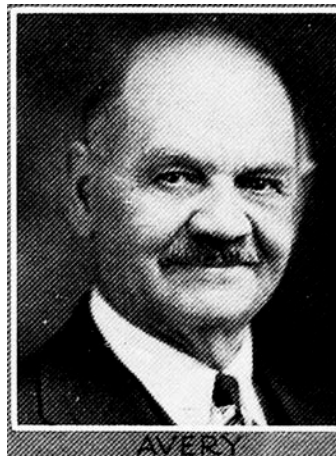


**AMPLIAS HALE AVERY**, Spencer.—Representative from Clay county, was born in a one-room log house on a farm near Excelsior, Richland county, Wisconsin, May 20th, 1870. After completing the work in the rural schools of his home county, he moved to Osage, Iowa, where he attended Cedar Valley seminary for several years. In 1889, he moved to South Dakota, where he taught in the rural schools, and in the town schools of Ashton and Woonsocket. He moved to Spencer, Iowa, in 1901, being superintendent of city schools there until 1915, when he resigned to go into the life insurance business which he has since followed. He married first Grace Cornwall (deceased). To this union was born one child, Theta Avery Tucker, of Minneapolis, Minnesota. He married again to Grace Dunham, and to this union three children were born, Margaret Avery Dunning, who died February 8, 1931, Alden D., and Barbara. He was a member of the 44th general assembly and was elected September 26th, 1933, to fill a vacancy in the 45th general assembly. Re-elected in 1934. A republican.



**AMPLAS HALE AVERY, Spencer.**—Representative from Clay county, was born in a one-room log house on a farm near Excelsior, Richland county, Wisconsin, May 20th, 1870. After completing the work in the rural schools of his home county, he moved to Osage, Iowa, where he attended Cedar Valley seminary for several years. In 1889, he moved to South Dakota, where he taught in the rural schools, and in the town schools of Ashton and Woonsocket. He moved to Spencer, Iowa, in 1901, being superintendent of city schools there until 1915, when he resigned to go into the life insurance business which he has since followed. He married first Grace Cornwall (deceased). To this union was born one child, Theta Avery Tucker, of Minneapolis, Minnesota. He married again to Grace Dunham, and to this union three children were born, Margaret Avery Dunning, who died February 8, 1931, Alden D., and Barbara. He was a member of the 44th General Assembly and was elected September 26th, 1933, to fill a vacancy in the 45th General Assembly caused by the appointment of Frank E. Wenig as labor commissioner. A republican.





**AMPLIAS HALE AVERY.**—Representative from Clay county, was born on a farm near Excelsior, Richland county, Wisconsin, May 20th, 1870. After completing the work in the rural schools of his home county, he moved to Osage, Iowa, where he attended Cedar Valley Seminary for several years. In 1889, he moved to South Dakota where he taught in the rural schools, and in the town schools of Ashton and Woonsocket. He moved to Spencer, Iowa, in 1901, being superintendent of city schools there until 1915 when he resigned to go into the life insurance work which he has since followed. He married first Grace Cornwall (deceased). To this union was born one child, Theta Avery Tucker, of Minneapolis, Minn. He married second Grace Dunham. To this union three children were born, Margaret Avery Dunning, who died February 8, 1931, Alden D. Avery, and Barbara Avery. A republican.