

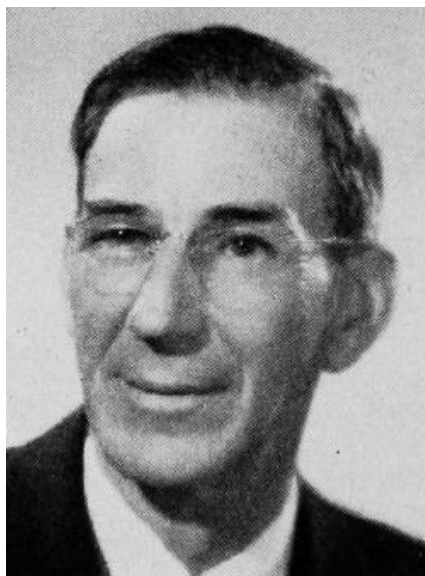


SHEPARD, Ray E., Chariton

Lucas County

Republican

Born on a farm in Appanoose county, January 25, 1895, the son of David D. and Nancy Jane Shepard. Moved to Lucas county in 1910. Educated in public schools of Appanoose and Lucas counties. Entered the army in 1918 and served with A. E. F. Married Gladys Van Arsdale of Blandinsville, Illinois, October 9, 1919. Father of three daughters. Following discharge from the army was sales manager of automobile agency at Chariton. In 1935 was appointed Deputy Sheriff of Lucas county and served two terms. Then was elected sheriff for three terms. Operator of Shepard Skelgas service. Member of Presbyterian church, past commander of the American Legion, member of A. F. & A. M., I. O. O. F., K.P., and Iowa State Sheriff's Association. Serving fourth term.



SHEPARD, Ray E., Chariton
Lucas County

Republican

Born on a farm in Appanoose county, January 25, 1895, the son of David D. and Nancy Jane Shepard. Moved to Lucas county in 1910. Educated in public schools of Appanoose and Lucas counties. Entered the army in 1918 and served with A.E.F. Married Gladys Van Arsdale of Blandinsville, Illinois, October 9, 1919. Father of three daughters, Marilyn, Roberta and Mrs. Evelyn Beebout. Following discharge from the army was sales manager of automobile agency at Chariton. In 1935 was appointed Deputy Sheriff of Lucas county and served two terms. Then was elected sheriff for three terms. Operator of Shepard Skelgas Service. Member of Presbyterian Church, past commander of the American Legion, member of A.F. & A. M., I.O.O.F., K.P., and Iowa State Sheriff's Association. Serving third term.



**SHEPARD, Ray E., Chariton, Lucas County
Republican**

Born on a farm in Appanoose county January 25, 1895, the son of David D. and Nancy Jane Shepard. Moved to Lucas county in 1910. Educated in public schools of Appanoose and Lucas counties. Entered the army in 1918 and served with A.E.F. Married Gladys Van Arsdale of Blandinsville, Illinois, October 9, 1919. Father of three daughters, Marilyn, Roberta, and Mrs. Evelyn Beebout. Following discharge from the army was sales manager of automobile agency at Chariton. In 1935 was appointed deputy sheriff of Lucas county and served two terms and was then elected sheriff for three terms. Operator of Shepard Skelgas service. Member of Presbyterian church, past commander of the American Legion, member of A.F. & A.M., I.O.O.F., K.P., and Iowa State Sheriff's association. Serving second term.



SHEPARD, Ray E., Chariton Lucas County
Republican

Born on a farm in Appanoose county January 25, 1895, the son of David D. and Nancy Jane Shepard. Moved to Lucas county in 1910. Educated in public schools of Appanoose and Lucas counties. Entered the army in 1918 and served with A.E.F. Married Gladys Van Arsdale of Blandinsville, Illinois, October 9, 1919. Father of three daughters, Evelyn, 21, Roberta, 19, and Marilyn, 11. Following discharge from the army was sales manager of automobile agency at Chariton. In 1935 was appointed Deputy Sheriff of Lucas county and served two terms and was then elected Sheriff for three terms. Member of Presbyterian church, American Legion, A. F. and A. M., I.O.O.F. and K.P., and Iowa State Sheriffs' Association. Serving first term.