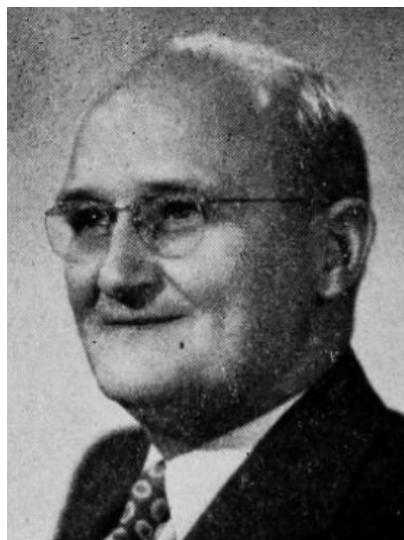


**SHARP, Fern Eugene, Elkader Republican  
36th Senatorial District—Clayton County**

Born on a farm at Edgewood, Iowa, February 19, 1894. Attended rural schools and graduated from Edgewood high school in 1912. Graduated from Iowa State Teachers' College in 1916. High school teacher and superintendent of schools for three years. Served in U.S. Army in France during World War I for 18 months. Attended University of Wisconsin and graduated from Iowa University Law school in 1924. Practiced law since 1923. Mayor of Edgewood, 1924 to 1927. Clayton county attorney, 1928 to 1932. Member of Elkader board of education six years. Married to Jessie A. Fritz in 1920; father of three children: Laura Mae, Eugene and Betty. Member of Congregational church, Masonic lodge, Knights of Pythias, Iowa Bar Association and American Bar Association. Served in House of Representatives in 48th, 49th, 50th and 50th Extra General Assemblies. Elected to the Senate in 1944 and 1948. Iowa Industrial and Defense Commission 1943-45. State Office Building Committee 1947-51.



**SHARP, Fern Eugene, Elkader Republican  
36th Senatorial District—Clayton County**

Born on a farm at Edgewood, Iowa, February 19, 1894. Attended rural schools and graduated from Edgewood high school in 1912. Graduated from Iowa State Teachers' college in 1916. High school teacher and superintendent of schools for three years. Served in U.S. Army in France during World War I for 18 months. Attended University of Wisconsin and graduated from Iowa University Law school in 1924. Practiced law since 1923. Mayor of Edgewood, 1924 to 1927. Clayton county attorney, 1928 to 1932. Member of Elkader board of education six years. Married to Jessie A. Fritz in 1920; father of three children; Laura Mae, Eugene and Betty. Member of Congregational Church, Masonic lodge, Knights of Pythias, Iowa Bar Association and American Bar Association. Served in House of Representatives in 48th, 49th, 50th and 50th Extra General Assemblies. Elected to the Senate in 1944 and 1948.



**SHARP, Fern Eugene, Elkader Republican  
36th Senatorial District—Clayton County.**

Born on a farm at Edgewood, Iowa, February 19, 1894. Attended rural schools and graduated from Edgewood high school in 1912. Graduated from Iowa State Teachers' college in 1916. High school teacher and superintendent of schools for three years. Served in U. S. Army in France during World War I for 18 months. Attended University of Wisconsin, and graduated from Iowa University Law school in 1924. Practiced law since 1923. Mayor of Edgewood, 1924 to 1927. Clayton county attorney, 1928 to 1932. Member of Elkader board of education six years. Married to Jessie A. Fritz in 1920; father of three children: Laura Mae, Eugene and Betty. Member of Congregational church, Masonic lodge and Knights of Pythias. Served in House of Representatives in 48th, 49th, 50th, and 50th extra General Assemblies. Elected to the Senate in 1944.



**SHARP, Fern Eugene, Elkader      Republican**  
**36th Senatorial District—Clayton County**

Born on a farm at Edgewood, Iowa, February 19, 1894. Attended rural schools and graduated from Edgewood high school in 1912. Graduated from Iowa State Teachers' college in 1916. High school teacher and Superintendent of Schools for three years. Served in U. S. Army in France during World War I for 18 months. Attended University of Wisconsin, and graduated from Iowa University Law School in 1924. Practiced law since 1923. Mayor of Edgewood 1924 to 1927. Clayton County Attorney, 1928 to 1932. Member of Elkader Board of Education six years. Married to Jessie A. Fritz in 1920; father of three children: Laura Mae, Eugene and Betty. Member of Congregational church, Masonic lodge and Knights of Pythias. Served in House of Representatives in 48th, 49th, 50th, and 50th extra General Assemblies. Elected to the Senate in 1944.



**SHARP, Fern Eugene, Elkader Clayton County**

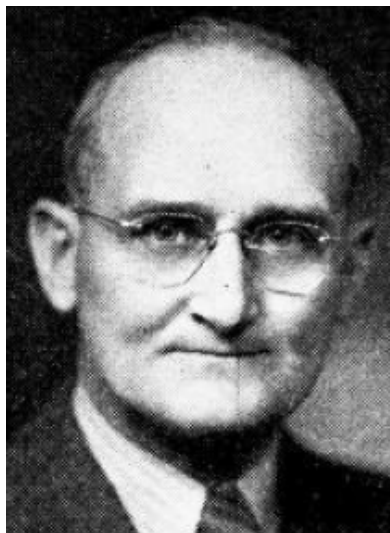
*Republican*

Born on a farm at Edgewood, Iowa, February 19, 1894. Attended rural schools and graduated from Edgewood high school in 1912. Graduated from Iowa State Teachers College in 1916. High school teacher and superintendent of schools for three years. Served in U. S. Army in France during World War I for 18 months. Attended University of Wisconsin, and graduated from Iowa University Law School in 1924. Practiced law since 1923. Mayor of Edgewood 1924 to 1927. Clayton county attorney, 1928 to 1932. Member of Elkader board of education six years. Married to Jessie A. Fritz in 1920; father of three children: Laura Mae, Eugene and Betty. Member of Congregational church, Masonic lodge and Knights of Pythias. Serving third term.



**SHARP, Fern Eugene, Elkader**      **Clayton County**  
*Republican*

Born on a farm at Edgewood, Iowa, February 19, 1894. Attended rural schools and graduated from Edgewood high school in 1912. Graduated from Iowa State Teachers College in 1916. High school teacher and superintendent of schools for three years. Served in U. S. Army in France during World War for 18 months. Attended University of Wisconsin, and graduated from Iowa University Law School in 1924. Practiced law since 1923. Mayor of Edgewood 1924 to 1927. Clayton county attorney, 1928 to 1932. Member of Elkader board of education six years. Married to Jessie A. Fritz in 1920; father of three children: Laura Mae, Eugene and Betty. Member of Congregational church, Masonic lodge and Knights of Pythias. Second term in legislature.



**SHARP, Fern Eugene, Elkader**

**Clayton County**

*Republican*

Born on a farm at Edgewood, Iowa, February 19, 1894. Attended rural schools and graduated from Edgewood high school in 1912. Graduated from Iowa State Teachers College in 1916. High school teacher and superintendent of schools for three years. Served in U. S. Army in France during World War for 18 months. Attended University of Wisconsin, and graduated from Iowa University Law School in 1924. Practised law since 1923. Mayor of Edgewood 1924 to 1927. Clayton county attorney, 1928 to 1932. Member of Elkader board of education six years. Married to Jessie A. Fritz in 1920; father of three children: Laura Mae, Eugene and Betty. Member of Congregational church, Masonic lodge and Knights of Pythias. First term in legislature.