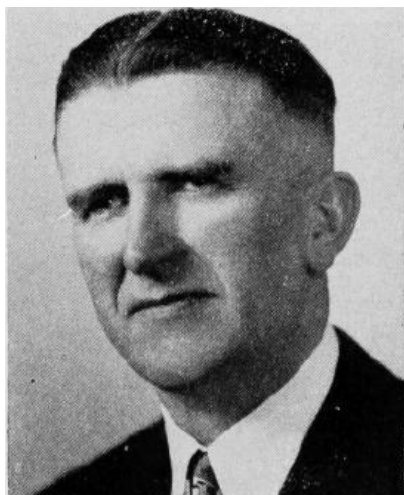


**OLSON, Allert G., Osage Mitchell County
Republican**

Born in Rudd township, Floyd county, March 13, 1896. Moved to Mitchell county in 1910. Education: rural schools, Cedar Valley seminary, Osage high school and one and one-half years Iowa State College. Left college to enlist for World War I, serving overseas with 88th division. Past commander, Osage Post, American Legion. Occupation: farming. Married in 1927 to Rikka M. H. Haugen. Four children, Yvonne, Aida, Joyce and A. Gilman Jr. Pioneered the following R.E.A. organizations: as president of Co-op Electric company serving Mitchell and parts of four other counties; as secretary, Dairyland Power Cooperative. Serving as V. P., Iowa Rural Electric Coop. and director, National Rural Electric Cooperative Association; director, Home Trust & Savings bank, Osage. Member of Osage Evangelical Lutheran church, American Legion, Commandery, Consistory, and Shrine. Active in various farm and civic organizations. Always interested in social measures and affairs of government. Serving fourth term.



**OLSON, Allert G., Osage Mitchell County
Republican**

Born in Rudd township, Floyd county, March 13, 1896. Moved to Mitchell county in 1910. Education: rural schools, Cedar Valley seminary, Osage high school and one and one-half years Iowa State college. Left college to enlist for World War I, serving overseas with 88th division. Past commander, Osage Post, American Legion. Occupation: farming. Married in 1927 to Rikka M. H. Haugen. Four children, Yvonne, Aida, Joyce and A. Gilman Jr. Pioneered the following R.E.A. organizations: as president of the Co-op, Electric company serving areas of Mitchell, Worth, Floyd, Chickasaw and Cerro Gordo counties; as secretary of Dairyland Power Cooperative serving 25 member cooperatives with 67,000 farm members in Iowa, Minnesota, Wisconsin and Illinois. Director Home Trust and Savings Bank, Osage. Member Osage Evangelical Lutheran Church, American Legion, Coeur de Leon Commandery No. 19, Osage, and Des Moines Consistory. Active in various farm and civic organizations. Always interested in social measures and affairs of government. Serving third term.



**OLSON, Allert G., Osage Mitchell County
Republican**

Born in Rudd township, Floyd county, March 13, 1896. Moved to Mitchell county in 1910. Education: rural schools, Cedar Valley seminary, Osage high school and one and one-half years Iowa State college. Left college to enlist for World War I, serving overseas with 88th division. Past Commander, Osage Post, American Legion. Occupation: farming. Married in 1927 to Rikka M. H. Haugen. Four children, Yvonne, Aida, Joyce and A. Gilman, Jr. Pioneered the following R.E.A. organizations: as president of the Co-Op. Electric company serving areas of Mitchell, Worth, Floyd, Chickasaw and Cerro Gordo counties; as secretary of Dairyland Power Cooperative serving 25 member cooperatives with 61,000 farm members in Iowa, Minnesota, Wisconsin and Illinois. Director Home Trust and Savings bank, Osage. Member Osage Evangelical Lutheran church, American Legion, Coeur de Leon Commandery No. 19, Osage, and Des Consistory. Active in various farm and civic organizations. Always interested in social measures and affairs of government. Second term.



**OLSON, Allert G., Osage Mitchell County
Republican**

Born in Rudd township, Floyd county, March 13, 1896. Moved to Mitchell county in 1910. Education: rural schools, Cedar Valley Seminary, Osage High School and one and one-half years Iowa State College. Left college to enlist for World War I, serving overseas with 88th division. Past Commander, Osage Post, American Legion. Occupation: farmer. Married in 1927 to Rikka M. H. Haugen. Four children, Yvonne, Aida, Joyce and A. Gilman Jr. Pioneered the following R.E.A. organizations: as president of the Co-op Electric Company serving areas of Mitchell, Worth, Floyd, Chickasaw and Cerro Gordo counties. As secretary of Dairyland Power Cooperative serving 24 member cooperatives with 36,500 farm members in Iowa, Minnesota, Wisconsin and Illinois. Director Home Trust and Savings Bank, Osage. Member Osage Evangelical Lutheran church, American Legion, and Coeur de Leon Commandery No. 19, Osage. Active in various farm and civic organizations. Always interested in social measures and affairs of government. First term.