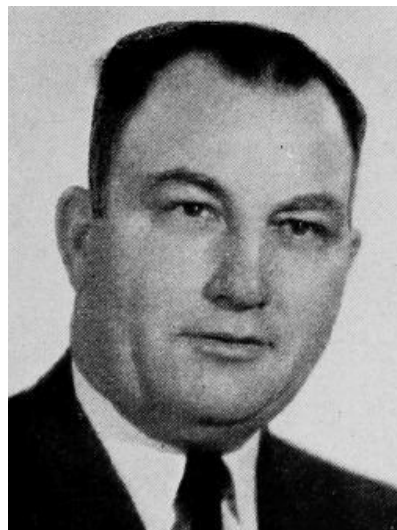


NIELSEN, Harry, Blencoe Monona County
Democrat

Born in Walnut, Iowa, May 3, 1895. Moved to Monona county at the age of 12. Educated in rural schools and the Little Sioux high school. Farmer all his life and now operates several farms in partnership with his sons and owns two. Raises alfalfa hay; also buys and sells ground, chopped and baled hay. Was a dirt contractor in 1940-41. Served as president of the Blencoe consolidated school board, township trustee, member of Farmers elevator board and Farm Bureau executive board. Married Irene Perry of Blencoe, Iowa. The Nielsens have five children, three sons and two daughters. Serving second term.



NIELSEN, Harry, Blencoe, Monona County
Democrat

Born in Walnut, Iowa, May 3, 1895. Moved to Monona county at the age of 12. Educated in rural schools and the Little Sioux high school. Farmer all his life and now operates several farms in partnership with his sons and owns two. Raises alfalfa hay; also buys and sells ground chopped and baled hay. Was a dirt contractor in 1940-41. Served as president of the Blencoe consolidated school board, township trustee, member of Farmers Elevator board and Farm Bureau executive board. Married Irene Perry of Blencoe, Iowa. The Nielsens have five children, three sons and two daughters. Serving first term.