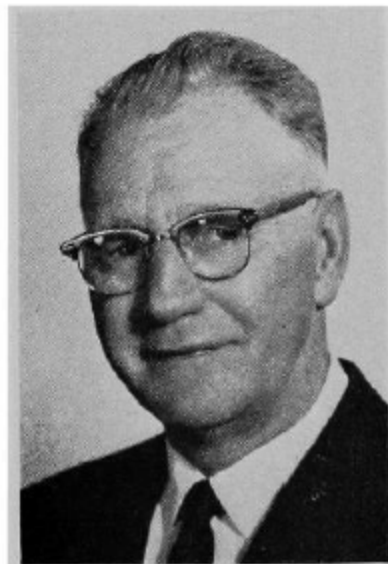


ELTHON, Leo, Fertile
Republican

**45th Senatorial District—Howard, Mitchell
and Worth Counties**

Born in Fertile, Iowa, June 9, 1898. Graduated from the Fertile High School in 1917. Attended Augsburg Seminary, Minneapolis, Minn., and Hamilton's University of Commerce, Mason City, Iowa. Taught manual training and athletics at Clear Lake, Iowa, in 1918 and was principal in the high school at Fertile. Engaged in farming and quarrying. Married Synneva Hjelmeland of Fertile, Feb. 28, 1922, and has two sons and four daughters. Served in the state senate in the 45th, 45th Extra, 46th, 46th Extra, 47th, 48th, 49th, 50th, 50th Extra, 52nd, 52nd Extra, 53rd and 54th sessions. He was Lieutenant governor from 1953 to 1957, and was governor for a short period after the death of William S. Beardsley. Re-elected to the senate and served in the 60th, 60th Extra and 61st sessions.



ELTHON, Leo, Fertile

Republican

**45th Senatorial District—Howard, Mitchell
and Worth Counties**

Born in Fertile, Iowa, June 9, 1898. Graduated from the Fertile High School in 1917. Later he attended the Augsburg Seminary, Minneapolis, Minn.; and Hamilton's University of Commerce, Mason City, Iowa. Taught manual training and athletics at Clear Lake, Iowa, in 1918 and later was principal in the high school at Fertile. Engaged in farming and quarrying. Married Synneva Hjelmeland of Fertile, Feb. 28, 1922, and has two sons and four daughters. Served in the state senate in the 45th, 45th Extra, 46th, 46th Extra, 47th, 48th, 49th, 50th, 50th Extra, 51st, 52nd, 52nd Extra, 53rd and 54th sessions. He was lieutenant governor from 1953 to 1957—and was governor for a short period after the death of William S. Beardsley.

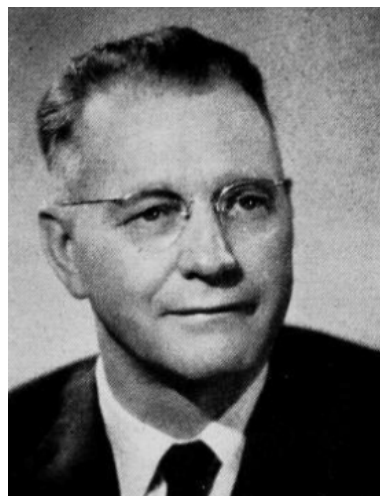




ELTHON, Leo, Fertile Republican

**41st Senatorial District—Mitchell,
Winnebago and Worth Counties**

Born in Fertile, Iowa, June 9, 1898. Graduated from the Fertile high school in 1917. Later he attended the Augsburg Seminary, Minneapolis, Minn.; Iowa State Teachers' College, Cedar Falls; and Hamilton's University of Commerce, Mason City, Iowa. Taught manual training and athletics at Clear Lake, Iowa, in 1918 and later was principal in the high school at Fertile. Engaged in farming and quarrying. Married to Synneva Hjelmeland of Fertile, February 28, 1922, and has two sons and four daughters. Served in the State Senate at the 45th, 45th Extra, 46th, 46th Extra, 47th, 48th, 49th, 50th, 50th Extra, 51st, 52nd, 52nd Extra, 53rd and 54th sessions.



ELTHON, Leo, Fertile Republican
**41st Senatorial District—Mitchell,
Winnebago and Worth Counties**

Born in Fertile, Iowa, June 9, 1898. Graduated from the Fertile high school in 1917. Later he attended the Augsburg Seminary, Minneapolis, Minn.; Iowa State Teachers' College, Cedar Falls; and Hamilton's University of Commerce, Mason City, Iowa. Taught manual training and athletics at Clear Lake, Iowa, in 1918 and later was principal in the high school at Fertile. Engaged in farming and quarrying. Married to Synneva Hjelmeland of Fertile, February 28, 1922, and has two sons and four daughters. Served in the State Senate at the 45th, 45th Extra, 46th, 46th Extra, 47th, 48th, 49th, 50th, 50th Extra, 51st, 52nd, 52nd Extra and 53rd sessions.



ELTHON, Leo, Fertile Republican
41st Senatorial District—Mitchell,
Winnebago and Worth Counties.

Born in Fertile, Iowa, June 9, 1898. Graduated from the Fertile high school in 1917. Later he attended the Augsburg Seminary, Minneapolis, Minn.; Iowa State Teachers' college, Cedar Falls; and Hamilton's University of Commerce, Mason City, Iowa. Taught manual training and athletics at Clear Lake, Iowa, in 1918 and later was principal in the high school at Fertile. Engaged in farming. Married to Synneva Hjelmeland of Fertile, February 28, 1922, and has two sons and four daughters. Served in the State Senate at the 45th, 45th extra, 46th, 46th extra, 47th, 48th, 49th, 50th, 50th extra, 51st and 52nd sessions.



ELTHON, Leo, Fertile

Republican

**45th Senatorial District—Mitchell, Winnebago
and Worth Counties**

Born in Fertile, Iowa, June 9, 1898. Graduated from the Fertile high school in 1917. Later he attended the Augsburg Seminary, Minneapolis, Minnesota; Iowa State Teachers College, Cedar Falls, and Hamilton's University of Commerce, Mason City, Iowa. Taught manual training and athletics at Clear Lake, Iowa, in 1918 and later was principal in the high school at Fertile. Engaged in farming, truck gardening, pickle processing, and cattle and hog feeding since 1920. Married to Synneva Hjelmeland of Fertile, February 28, 1922, and has two sons and four daughters. Elected to the senate in 1932, 1936, and 1940.



ELTHON, Leo, Fertile

Republican

**45th Senatorial District—Mitchell, Winnebago and
Worth Counties**

Born in Fertile, Iowa, June 9, 1898. Graduated from the Fertile high school in 1917. Later he attended the Augsburg Seminary, Minneapolis, Minnesota; Iowa State Teachers College, Cedar Falls, and Hamilton's University of Commerce, Mason City, Iowa. Taught manual training and athletics at Clear Lake, Iowa, in 1918 and later was principal in the high school at Fertile. Engaged in farming, truck gardening, pickle processing, and cattle and hog feeding since 1920. Married to Synneva Hjelmeland of Fertile, February 28, 1922, and has two sons and four daughters. Elected to the senate in 1932, 1936, and 1940.



ELTHON, Leo, Fertile *Republican*
45th Senatorial District—Mitchell, Winnebago and Worth
Counties

Born in Fertile, Iowa, June 9, 1898. Graduated from the Fertile high school in 1917. Later he attended the Augsburg Seminary, Minneapolis, Minnesota, Iowa State Teachers College, Cedar Falls, and Hamilton's University of Commerce, Mason City, Iowa. Taught manual training and athletics at Clear Lake, Iowa, in 1918 and later was principal in the high school at Fertile. Engaged in farming, truck gardening, pickle processing, and cattle and hog feeding since 1920. Married to Synneva Hjelmeland of Fertile, February 28, 1922, and has two sons and four daughters. Elected to the senate in 1932, and re-elected in 1936.



LEO ELTHON, Fertile.—Senator from the forty-fifth district, comprising Worth, Winnebago and Mitchell counties, was born in Fertile, Iowa, June 9, 1898, and is now engaged in general farming. He attended the elementary schools at Fertile and graduated from the high school there in 1917. Later he attended the Augsburg Seminary, Minneapolis, Minnesota, Iowa State Teachers college, Cedar Falls, and Hamilton's University of Commerce, Mason City, Iowa. He taught school during two years, 1918 and 1919, instructing manual training and athletics at Clear Lake, Iowa, and later as principal in the high school at Fertile. He started farming in 1920. His farming operations include truck gardening, pickle processing, and in the winter, cattle and hog feeding. He was married to Synneva Hjelmeland of Fertile, February 28, 1922, and has two sons and four daughters. Elected to the senate in 1932, and re-elected in 1936. A republican.



LEO ELTHON, Fertile.—Senator from the forty-first district, comprising Worth, Winneshago and Mitchell counties, was born in Fertile, Iowa, June 9, 1898, and is now engaged in general farming. He attended the elementary schools at Fertile and graduated from the high school there in 1917. Later he attended the Augsburg seminary, Minneapolis, Minnesota, Iowa State Teachers college, Cedar Falls, and Hamilton's University of Commerce, Mason City, Iowa. He taught school during two years, 1918 and 1919, instructing manual training and athletics at Clear Lake, Iowa, and later as principal in the high school at Fertile. He started farming in 1920. His farming operations include truck gardening, pickle processing, and in the winter, cattle and hog feeding. He was married to Synneva Hjelmeland of Fertile, February 28, 1922, and has two sons and three daughters. A republican.



LEO ELTHON, Fertile.—Senator from the forty-first district, comprised of Worth, Winnebago and Mitchell counties, was born in Fertile, Iowa, June 9, 1898, and is now engaged in general farming. He attended the elementary schools at Fertile and graduated from the high school there in 1917. Later he attended the Augsburg Seminary, Minneapolis, Minnesota, Iowa State Teachers College, Cedar Falls, and Hamilton's University of Commerce, Mason City, Iowa. He taught school during two years, 1918 and 1919, in the capacity of manual training and athletics at Clear Lake, Iowa, and later as principal in the high school at Fertile. He started farming in 1920. His farming operations include truck gardening, pickle processing, and in the winter cattle and hog feeding. He was married to Synneva Hjelmeland of Fertile, February 28, 1922, and has two sons and two daughters. A republican.