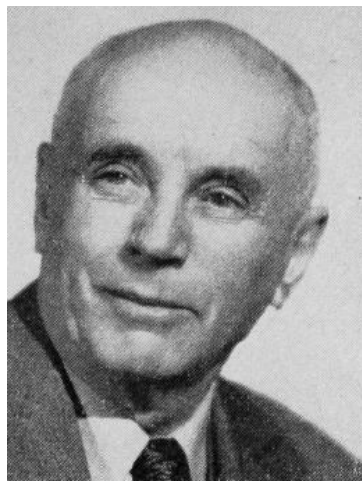


BERRY, Richard C., Pomeroy
Calhoun County
Republican

Born in England, November 8, 1876. Son of Mary and John Berry who immigrated to the United States in 1881. Reared on a farm in Pocahontas county. Attended Pomeroy high school and the Highland Park college, Des Moines, Iowa, and the Chillicothe Business college, Chillicothe, Missouri. Entered banking circles in 1900 and retired in 1947. During this period served as cashier and vice president of the Pomeroy State Bank. Married in 1904 to Nellie Holmes, now deceased. One daughter, Mrs. Gladys Albrecht, and four grandsons. Affiliated with the Methodist church. Member of the Masonic lodge, Modern Woodmen, and the Order of the Eastern Star. Serving second term.



BERRY, Richard C., Pomeroy
Calhoun County
Republican

Born in England, November 8, 1876. Son of Mary and John Berry who immigrated to the United States in 1881. Reared on a farm in Pocahontas county. Attended Pomeroy high school and the Highland Park college, Des Moines, Iowa, and the Chillicothe Business college, Chillicothe, Missouri. Entered banking circles in 1900 and retired in 1947. During this period served as Cashier and Vice-president of the Pomeroy State Bank. Married in 1904 to Nellie Holmes. She passed away in July 1944. One daughter, Mrs. Gladys Albrecht, and three grandsons. Affiliated with the Methodist Church. Member of the Masonic lodge, Modern Woodmen, and the Order of the Eastern Star. Serving first term.