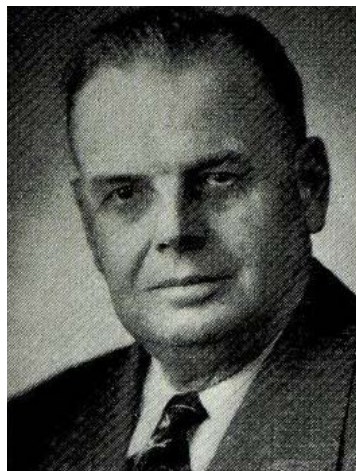




STRAWMAN, Clifford M., Anamosa
Jones County
Republican

Born in Jones County, Iowa, 1889. Graduate Anamosa high school, Cornell College, Columbia University Law school. Admitted to bar in Montana and Iowa. Married Blanche Mason of Valley City, North Dakota, 1918, two children. At successive periods was manager Montana Wheat Growers Association, American Wheat Growers Association, member of Minneapolis Grain exchange, attorney for Illinois Agricultural association, National livestock credit corporations, Penn Mutual life insurance in Mexico. Farm owner and operator. Delta Chi, Acacia, Tau Kappa Alpha fraternities, Mason, Methodist. Serving fifth term.



STRAWMAN, Clifford M., Anamosa
Jones County
Republican

Born in Jones county, Iowa, 1889. Graduate Anamosa high school, Cornell College, Columbia University Law school. Admitted to bar in Montana and Iowa. Married Blanche Mason of Valley City, North Dakota, 1918, two children. At successive periods was manager Montana Wheat Growers Association, American Wheat Growers Association, member of Minneapolis Grain exchange, attorney for Illinois Agricultural association, National livestock credit corporations, Penn Mutual life insurance in Mexico. Farm owner and operator. Delta Chi, Acacia, Tau Kappa Alpha fraternities, Mason, Methodist. Serving fourth term.



STRAWMAN, Clifford M., Anamosa
Jones County
Republican

Born in Jones county, Iowa, 1889. Graduate Anamosa high school, Cornell college, Columbia University Law school. Admitted to bar in Montana and Iowa. Married Blanche Mason of Valley City, North Dakota, 1918, two children. At successive periods was manager Montana Wheat Growers Association, American member Minneapolis Grain Exchange, attorney for Illinois Agricultural association, National livestock credit corporation, Penn Mutual life insurance in Mexico. Farm owner and operator. Delti Chi, Acacia, Tau Kappa Alpha fraternities, Mason, Methodist. Serving third term.



STRAWMAN, Clifford M., Anamosa
Jones County

Republican

Born in Jones county, Iowa, 1889. Graduate Anamosa high school, Cornell college, Columbia university law school. Admitted to bar in Montana and Iowa. Married Blanche Mason of Valley City, North Dakota, 1918, two children. At successive periods; was manager Montana Wheat Growers association, American Wheat Growers association, Minneapolis, Member Minneapolis Grain Exchange, Attorney for Illinois Agricultural association, National Livestock Credit Corporation, Penn Mutual life insurance in Mexico. Farm owner and operator. Delta Chi, Acacia, Tau Kappa Alpha fraternities, Mason, Methodist. Serving second term.



STRAWMAN, Clifford M., Anamosa
Jones County
Republican

Born in Jones county, Iowa, 1889. Graduate Anamosa High School, Cornell College, Columbia University Law School. Admitted to bar in Montana and Iowa. Married Blanche Mason of Valley City, North Dakota, 1918, two children. At successive periods was manager Montana Wheat Growers' Association, American Wheat Growers Associated, Minneapolis, Member Minneapolis Grain Exchange, Attorney for Illinois Agricultural Association, National Livestock Credit Corporation, Penn Mutual Life Insurance, in Mexico. Farm owner and operator. Delta Chi, Acacia, Tau Kappa Alpha fraternities, Mason, Methodist. Serving first term.