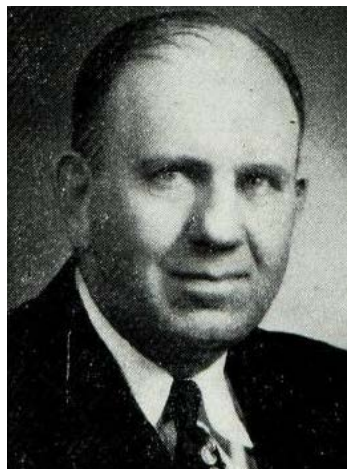




**MEYER, Dwight W., Odebolt Sac County
Republican**

Born October 18, 1901, on the farm north of Odebolt, Iowa, which he now owns. Educated in the local schools and graduated from Iowa State College in 1925 with a B.S. degree in animal husbandry. Competed in college athletics and member of Alpha Zeta, "A.A." and Adelante fraternities. Married Helen Rocho in 1925 and they have five children. Has been active in farm organizations, school and church affairs. Purebred livestock breeder, and livestock feeder and producer of farm seeds. Operates 355-acre farm under partnership agreement. Member of Methodist church, Farm Bureau, Rotary and State R.E.A. board. Serving third term. Named state PMA chairman, August, 1953.



MEYER, Dwight W., Odebolt Sac County
Republican

Born October 18, 1901 on the farm north of Odebolt, Iowa, which he now owns and operates. Educated in the local schools and graduated from Iowa State College in 1925 with a B.S. degree in animal husbandry. Competed in college athletics and member of Alpha Zeta, "A.A." and Adelante fraternities. Married Helen Rocho in 1925 and they have five children. Has been active in farm organizations, school and church affairs. Purebred livestock breeder, and livestock feeder and producer of farm seeds. Operates 355 acre farm under partnership agreement. Member of Methodist church, Farm Bureau, Rotary and State R.E.A. board. Serving second term.



MEYER, Dwight W., Odebolt Sac County
Republican

Born October 18, 1901 on the farm north of Odebolt, Iowa, which he now owns and operates. Educated in the local schools and graduated from Iowa State college in 1925 with a B.S. degree in Animal husbandry. Lettered in wrestling and awarded numerals in football and baseball. Member of Alpha Zeta, "A.A." and Adelante fraternities. Married Helen Rocho, November 26, 1925, and they have five children, Mary Jeanne, Barbara, Clyde, Lois and James. Has been active in farm organization, school and church affairs. Purebred livestock breeder, livestock feeder and producer of farm seeds. Operates 355 acre farm under partnership agreement. Member of Methodist Church, Farm Bureau, local school board and State R.E.A. board. Serving first term.