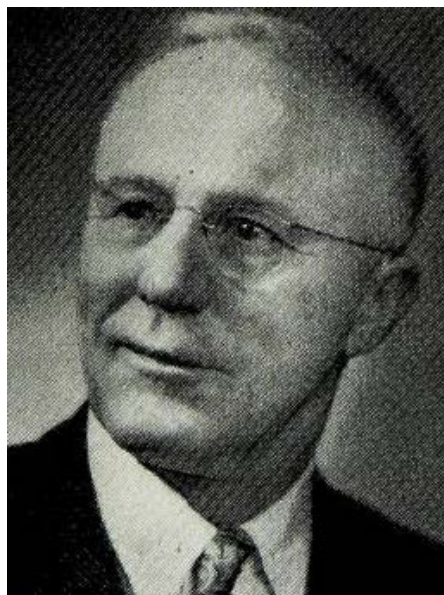


**HUISMAN, Robert, Sibley Osceola County
Republican**

Born January 5, 1894, on a farm near Lennox, South Dakota. Attended rural schools. Moved to Scotland, South Dakota, with parents in 1901. Married Lydia Stipich in 1918. Moved to a farm near Sibley, Iowa, in 1935. Father of five children: Mrs. Ted Schoon of George, Iowa; Fred of Sibley, Iowa; Mrs. Raymond Beving of Wellsburg, Iowa; Seth, living in Sibley, Iowa, and Ted, a freshman at Central College, Pella, Iowa. Owns and operates a 208-acre farm near Sibley, Iowa. Is active in farm organizations and community affairs. Member of the county board of education, secretary of the Holman township school and president of Holman county telephone company. Served overseas in World War I, a member of the American Legion and past commander of the local post. Is an active member of the Trinity Reformed church, serving as a member of the Consistory the past twelve years. Serving second term.



**HUISMAN, Robert, Sibley Osceola County
Republican**

Born January 5, 1894, on a farm near Lennox, South Dakota. Attended rural schools. Moved to Scotland, South Dakota with parents in 1901. Married Lydia Stipich in 1918. Moved to a farm near Sibley, Iowa, in 1935. Father of five children; Mrs. Ted Schoon of George, Iowa, Fred of Sibley, Iowa, Mrs. Raymond Beving of Wellsburg, Iowa, Seth, a Junior in Central College at Pella, Iowa and Ted, a Junior in Sibley high school. Owns and operates a 208 acre farm near Sibley, Iowa. Is active in farm organizations and community affairs. Member of the county Board of Education, secretary of the Holman township school and president of Holman County Telephone Company. Served over seas in World War one, a member of the American Legion and Past Commander of the local post. Is an active member of the Trinity Reformed church, serving as a member of the Consistory the past twelve years. Serving first term.