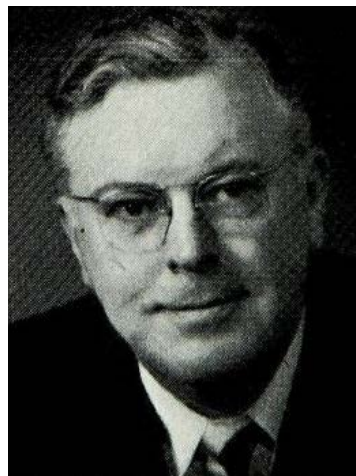




**HART, Stanley Lawrence, Keokuk**  
Republican  
**1st Senatorial District—Lee County**

Born in Woodstock, Ill., March 21, 1896. Attended public and high schools of Woodstock and School of Commerce at Chicago. World War I veteran, served with American Expeditionary Forces in France and Germany. In business in Des Moines until 1923; in Los Angeles, Calif., until 1932; engaged in cooperage manufacturing business in Keokuk at present time. Married June 12, 1929 to Kathryn Pyle of Keokuk; children, Marilyn and Stanley Lawrence II. Member of St. John's Episcopal church, American Legion and Keokuk Rotary club. Elected to fill vacancy in Senate in 1937; re-elected in 1938, 1942, 1946 and 1950. President Pro Tempore of Senate in 51st, 54th and 55th General Assemblies.



**HART, Stanley Lawrence, Keokuk**

Republican

**1st Senatorial District—Lee County**

Born in Woodstock, Ill., March 21, 1896. Attended public and high schools of Woodstock and School of Commerce at Chicago. World War I veteran, served with American Expeditionary Forces in France and Germany. In business in Des Moines until 1923; in Los Angeles, Calif., until 1932; engaged in cooperage manufacturing business in Keokuk at present time. Married June 12, 1929 to Kathryn Pyle of Keokuk; children, Marilyn and Stanley Lawrence II. Member of St. John's Episcopal church, American Legion and Keokuk Rotary club. Elected to fill vacancy in Senate in 1937; re-elected in 1938, 1942, 1946 and 1950. President Pro Tempore of Senate in 51st and 54th General Assemblies.



**HART, Stanley Lawrence, Keokuk**  
**Republican**

**1st Senatorial District—Lee County**

Born in Woodstock, Ill., March 21, 1896. Attended public and high schools of Woodstock and School of Commerce at Chicago. World War I veteran, served with American Expeditionary forces in France and Germany. In business in Des Moines until 1923; in Los Angeles, Calif., until 1932; engaged in Cooperage Manufacturing business in Keokuk at present time. Married June 12, 1929 to Kathryn Brown Pyle of Keokuk; children, Marilyn and Stanley Lawrence II. Member of St. John's Episcopal Church, American Legion and Keokuk Rotary club. Elected to fill vacancy in Senate in 1937; reelected in 1938, 1942 and 1946; served in the 47th, 48th, 49th, 50th, 50th Extra, President Pro Tempore in 51st; 52nd, 52nd Extra and 53rd General Assemblies.



**HART, Stanley Lawrence, Keokuk**  
Republican

**1st Senatorial District—Lee County.**

Born in Woodstock, Ill., March 21, 1896. Attended public and high schools of Woodstock and School of Commerce at Chicago. World War I veteran, served with American Expeditionary forces in France and Germany. In business in Des Moines until 1923; in Los Angeles, Calif., until 1932; engaged in Cooperage Manufacturing business in Keokuk at present time. Married June 12, 1929, to Kathryn Brown Pyle of Keokuk; children, Marilyn and Stanley Lawrence II. Member American Legion and Keokuk Rotary club. Elected to fill vacancy in Senate in 1937; re-elected in 1938, 1942 and 1946; served in the 47th, 48th, 49th, 50th, 50th extra, President Pro Tempore in 51st and 52nd General Assemblies.



**HART, Stanley Lawrence, Keokuk      Republican**  
**1st Senatorial District—Lee County**

Born in Woodstock, Ill., March 21, 1896. Attended public and high schools of Woodstock and School of Commerce at Chicago. World War I veteran, served with American Expeditionary forces in France and Germany. In business in Des Moines until 1923; in Los Angeles, Calif., until 1932; engaged in Cooperage Manufacturing business in Keokuk at present time. Married June 12, 1929, to Kathryn Brown Pyle of Keokuk; children, Marilyn and Stanley Lawrence II. Member American Legion and Keokuk Rotary Club. Elected to fill vacancy in Senate in 1937; re-elected in 1938 and 1942; serving in the 47th, 48th, 49th, 50th, 50th extra, and President Pro Tempore in 51st General Assemblies.



**HART, Stanley Lawrence, Keokuk**      *Republican*  
**1st Senatorial District—Lee County**

Born in Woodstock, Illinois, March 21, 1896. Attended public and high schools of Woodstock and School of Commerce at Chicago. World War No. 1 veteran, served with American Expeditionary Forces in France and Germany. In business in Des Moines until 1923; in Los Angeles, Calif., until 1932; thence in Keokuk until present time. Married June 12, 1929, to Kathryn Brown Pyle of Keokuk; children, Marilyn and Stanley Lawrence, II. Member American Legion and Keokuk Rotary Club. Elected to fill unexpired term of the late Senator T. F. Driscoll in 1937. Re-elected for full term in 1938; re-elected in 1942; serving in the 47th, 48th, 49th and 50th General Assemblies.



**HART, Stanley Lawrence, Keokuk**      *Republican*  
**1st Senatorial District—Lee County**

Born in Woodstock, Ill., March 21, 1896. Attended public and high schools of Woodstock, and School of Commerce in Chicago. World War veteran, served with American Expeditionary Forces in France and Germany. In business in Des Moines until 1923; in Los Angeles, Calif., until 1932; then moved to Keokuk, where he is engaged in a wholesale cheese business and the Tri-State Candy Company. Married June 12, 1929, to Kathryn Brown Pyle of Keokuk; children, Marilyn and Stanley Lawrence, II. Member American Legion and Keokuk Rotary Club. Elected to fill unexpired term of the late Senator T. F. Driscoll in 1937. Re-elected for full term in 1939, serving in the 47th, 48th, and 49th General Assemblies.



**HART, Stanley Lawrence, Keokuk** *Republican*  
**1st Senatorial District—Lee County**

Born in Woodstock, Illinois, March 21, 1896. Received education in the public and high schools of Woodstock, and attended a school of commerce in Chicago. World war veteran, served with American Expeditionary Forces in France and Germany. Went into business in Des Moines until 1923; in Los Angeles, California, until 1932; then moved to Keokuk, where he is now engaged in a wholesale cheese business and the Tri-State Candy Company. Married June 12, 1929, to Kathryn Brown Pyle of Keokuk; father of two children, Marilyn and Stanley Lawrence, II. A member of the American Legion and the Keokuk Rotary Club. Elected to fill unexpired term of the late Honorable Senator T. F. Driscoll.





**STANLEY LAWRENCE HART, Keokuk.**—Senator from the first district, Lee county, was born in Woodstock, Illinois, March 21, 1896. He received his education in the public and high schools of Woodstock, and attended a school of commerce in Chicago. World war veteran, and served with American Expeditionary Forces in France and Germany. Upon completion of service he was in business in Des Moines until 1923, then in Los Angeles, California, until 1932, when he moved to Keokuk where he is now engaged in the wholesale cheese business and where he also operates the Tri-State Candy Company. He was married June 12, 1929, to Kathryn Brown Pyle of Keokuk, and they have two children, Marilyn and Stanley Lawrence, II. He is a member of the American Legion and the Keokuk rotary club. Elected to fill unexpired term in the forty-seventh general assembly of the late Honorable Senator T. F. Driscoll. A republican.