



**BEKMAN, E. K., Ottumwa Republican
13th Senatorial District—Wapello County**

Born at Alton, Iowa, August 18, 1900. Graduated from the Alton High School. He received B. A. degree in 1921 from the University of Iowa and LL.B degree in 1923. Married Grace Redfield, has one daughter, Louise Bekman Larew. Engaged in the practice of law in Ottumwa. Attended the Officers Training Camp, Fort Sheridan, Ill., and was commissioned 2nd Lieutenant, Infantry, during World War I. Member of the First Presbyterian Church, Ottumwa. Served as county attorney for Wapello County three terms, 1927 to 1932. Was county chairman of the Young Republicans during the 1936 campaign. Served as State Senator during the 48th, 49th, 50th Extra, 51st, 52nd, 52nd Extra 53rd, 54th and 55th General Assemblies.



BEKMAN, E. K., Ottumwa Republican
13th Senatorial District—Wapello County

Born at Alton, Iowa, August 18, 1900. Graduated from the Alton high school. He received B.A. degree in 1921 from the University of Iowa and LL.B. degree in 1923. Married Grace Redfield, has one daughter, Louise Bekman. Engaged in the practice of law in Ottumwa. Attended the Officers' Training Camp, Fort Sheridan, Ill., and was commissioned 2nd Lieutenant, Infantry, during World War I. Member of the First Presbyterian Church, Ottumwa. Served as county attorney for Wapello county 3 terms, 1927 to 1932. Was county chairman of the Young Republicans during the 1936 campaign. Served as State Senator during the 48th, 49th, 50th Extra, 51st, 52nd, 52nd Extra, 53rd and 54th General Assemblies.



**BEKMAN, E. K., Ottumwa Republican
13th Senatorial District—Wapello County**

Born at Alton, Iowa, August 18, 1900. Graduated from the Alton high school. He received B.A. degree in 1921 from the University of Iowa and LL.B. degree in 1923. Married, father of one child. Engaged in the practice of law in Ottumwa. Attended the Officers' Training Camp, Fort Sheridan, Ill., and was commissioned 2nd Lieutenant, Infantry, during World War I. Member of the First Presbyterian Church at Ottumwa. Served as county attorney for Wapello county, 3 terms in 1927-1932. Was county chairman of the Young Republicans during the 1936 campaign. Served as State Senator during the 48th, 49th, 50th Extra, 51st, 52nd, 52nd Extra and 53rd General Assemblies.



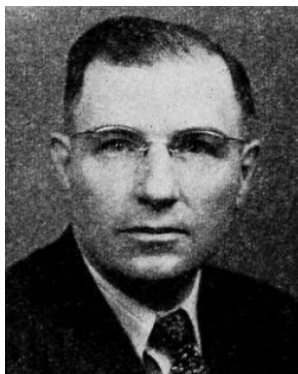
BEKMAN, E. K., Ottumwa Republican
13th Senatorial District—Wapello County

Born at Alton, Iowa, August 18, 1900. Graduated from the Alton high school. He received B.A. degree in 1921 from the University of Iowa and LL.B. degree in 1923. Married, father of one child. Engaged in the practice of law in Ottumwa. Attended the Officers' Training Camp, Fort Sheridan, Ill., and was commissioned 2nd Lieutenant, Infantry, during World War I. Member of the First Presbyterian church at Ottumwa. Served as County Attorney for Wapello county, 3 terms in 1927-1932. Was County Chairman of the Young Republicans during the 1936 campaign. Served as State Senator during the 48th, 49th, 50th Ex., 51st and 52nd General Assemblies.



BEKMAN, E. K., Ottumwa Republican
13th Senatorial District—Wapello County

Born at Alton, Iowa, August 18, 1900. Graduated from the Alton high school. Also received B.A. degree in 1921 from the University of Iowa and LL.B. degree in 1923. Married, father of one child. Engaged in the practice of law in Ottumwa. Attended the Officers' Training Camp, Fort Sheridan, Ill., and was commissioned 2nd Lieutenant Infantry during the World War. Member of the First Presbyterian church at Ottumwa. Served as County Attorney for Wapello county, 3 terms in 1927-1932. Was County Chairman of the Young Republicans during the 1936 campaign. Served as State Senator during the 48th, 49th, 50th, 50th Ex. and 51st General Assemblies.



BEKMAN, E. K., Ottumwa *Republican*

13th Senatorial District—Wapello County

Born at Alton, Iowa, August 18, 1900. Graduated from the Alton high school. Also received B.A. degree in 1921 from the University of Iowa and LL.B. degree in 1923. Married, father of one child. Engaged in the practice of law in Ottumwa. Attended the Officers' Training Camp, Fort Sheridan, Ill., and was commissioned 2nd Lieutenant Infantry during the World War. Member of the First Presbyterian church at Ottumwa. Served as county attorney for Wapello county, 3 terms in 1927-1932. Was County Chairman of the Young Republicans during the 1936 campaign. Served as state senator for Wapello county during the 48th, 49th and 50th general assemblies.



BEKMAN, E. K., Ottumwa

Republican

13th Senatorial District—Wapello County

Born at Alton, Iowa, August 18, 1900. Graduated from the Alton high school. Also received B.A. degree in 1921 from the University of Iowa and L.L.B. degree in 1923. Married, father of one child. Engaged in the practice of law in Ottumwa. Attended the Officers' Training Camp, Fort Sheridan, Ill., and was commissioned 2nd Lieutenant Infantry during the World War. Member of the First Presbyterian church at Ottumwa. Served as county attorney for Wapello county, 3 terms in 1927-1932. Was County Chairman of the Young Republicans during the 1936 campaign. Served as state senator for Wapello county during the 48th and 49th general assemblies.



BEKMAN, E. K., Ottumwa *Republican*

13th Senatorial District—Wapello County

Born at Alton, Iowa, August 18, 1900. Graduated from the Alton high school. Also received B.A. degree in 1921 from the University of Iowa and L.L.B. degree in 1923. Married, father of one child. Engaged in the practice of law in Ottumwa. Attended the Officers' Training Camp, Fort Sheridan, Ill., and was commissioned 2nd Lieutenant Infantry during the World War. Member of the First Presbyterian Church at Ottumwa. Served as county attorney for Wapello county, 3 terms in 1927-1932. Was County Chairman of the Young Republicans during the 1936 election. Served as state senator for Wapello county during the 48th general assembly.