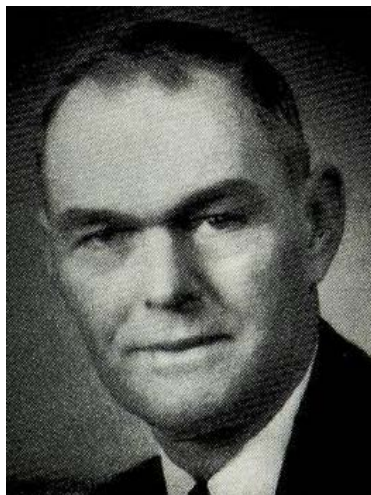




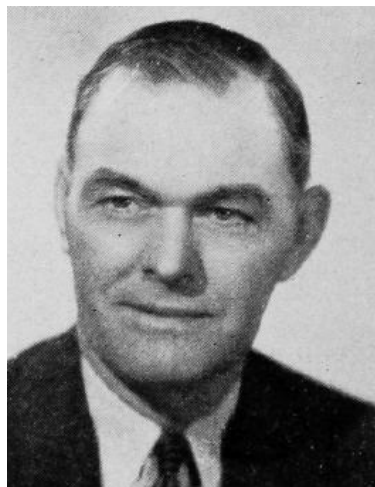
BASS, Elmer A., Red Oak
Montgomery County
Republican

Born in Pottawattamie county, Iowa, 1887; attended rural schools and Emerson high school; taught rural school, attended Iowa State college, graduated 1912; member Alpha Zeta, Phi Kappa Phi, Delta Sigma Rho honor societies. Married Nellie M. Smith, lived on Oakdale farm until moving to Red Oak in 1947. Father of Edith Bass Naylor, Rollin G. Bass. President, Oakdale Farm Inc., a family enterprise. Member Methodist church; Superintendent of Sunday school. Director and secretary of school board, member county board of education, 1920-1948. Charter member county Farm Bureau, secretary, president and voting director. Member State Planning Committee, 1938-1942. Commissioner local Soil Conservation District, 1938-1947. Director Montgomery county Farm Loan Association. Member, Montgomery N.F.L.A. board. Chairman S. W. Iowa Y.M.C.A. Skelly Agricultural Achievement award, 1949. Serving fifth term.



BASS, Elmer A., Red Oak
Montgomery County
Republican

Born in Pottawattamie county, Iowa, 1887; attended rural schools and Emerson high school; taught rural school, attended Iowa State college, graduated 1912; member Alpha Zeta, Phi Kappa Phi, Delta Sigma Rho honor societies. Married Nellie M. Smith, lived on Oakdale farm until moving to Red Oak in 1947. Father of Edith Bass Naylor, Rollin G. Bass. President, Oakdale Farm Inc., a family enterprise. Member Methodist church; Superintendent of Sunday school. Director and secretary of school board, member county board of education, 1920-1948. Charter member county Farm Bureau, secretary, president and voting director. Member State Planning Committee, 1938-1942. Commissioner local Soil Conservation District, 1938-1947. Director Montgomery county Farm Loan Association. District member, N.F.L.A. Advisory board. Chairman S.W. Iowa Y.M.C.A. Skelly Agricultural Achievement award, 1949. Serving fourth term.



**BASS, Elmer A., Red Oak
Montgomery County
Republican**

Born in Pottawattamie county, Iowa, 1887; attended rural schools and Emerson high school; taught rural school, attended Iowa State college, graduated 1912; member Alpha Zeta, Phi Kappa Phi, Delta Sigma Rho honor societies. Married Nellie M. Smith, lived on Oakdale farm until moving to Red Oak in 1947. Father of Edith Bass Naylor, Rollin G. Bass. President, Oakdale Farm Inc., a family enterprise. Member Methodist Church; teacher in church school. Director and secretary of school board, member county board of education, 1920-1948. Charter member county Farm Bureau, secretary, president and voting director. Member State Planning Committee, 1938-1942. Commissioner local Soil Conservation District, 1938-1947. Director Montgomery county Farm Loan Association. Chairman S.W. Iowa Y.M.C.A. Serving third term.



BASS, Elmer A., Emerson
Montgomery County
Republican

Born in Pottawattamie county, 1887, of Connecticut Yankee and Pennsylvania "Dutch" ancestry. Attended rural schools in Pottawattamie and Montgomery counties, and Emerson high school. Taught in rural schools, then attended Iowa State college, graduating in 1912. A member of Alpha Zeta agricultural, Phi Kappa Phi schoralship, and Delta Sigma Rho forensic societies in senior year. Married to Nellie M. Smith of Emerson after graduation, settling on Oakdale farm, still their home. Father of Edith Bass Naylor of Pocahontas, and Rollin G. Bass, manager of Oakdale farm. A member and trustee of Emerson Methodist church, and either teacher or superintendent of church school for 30 years. Director and secretary of township school board, and a member of the county board of education since 1920. A charter member of the Montgomery county Farm Bureau, successively township director, secretary, president and voting director. Member of the State Planning Committee, and a commissioner of Montgomery soil conservation district. President of YMCA, 1941-47. Serving second term.



**BASS, Elmer A., Emerson Montgomery County
Republican**

Born in Pottawattamie county, 1887, of Connecticut Yankee and Pennsylvania "Dutch" ancestry. Attended rural schools in Pottawattamie and Montgomery counties, and Emerson high school. Taught in rural schools, then attended Iowa State college, graduating in 1912. A member of Alpha Zeta agricultural, Phi Kappa Phi scholarship, and Delta Sigma Rho forensic societies in senior year. Married to Nellie M. Smith of Emerson after graduation, settling on Oakdale farm, still their home. Father of Edith Bass Naylor of Pocahontas, and Rollin G. Bass, manager of Oakdale farm. A member and trustee of Emerson Methodist church, and either teacher or superintendent of church school for 30 years. Director and Secretary of Township School Board, and a member of the County Board of Education since 1920. A charter member of the Montgomery County Farm Bureau, successively township director, secretary, president and voting director. Member of the State Planning Committee, and a Commissioner of Montgomery soil conservation district. President of the YMCA for Southwest Iowa, 1941-45. Serving first term.