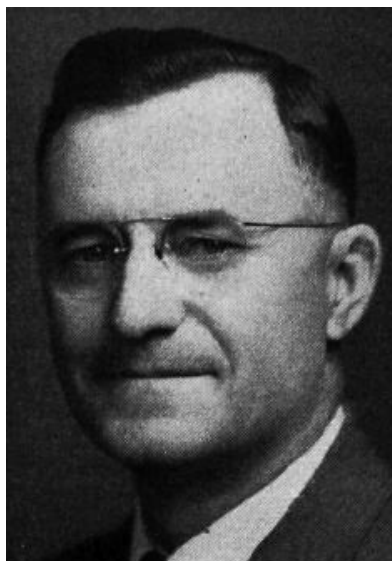


BELLMAN, G. D. (Don), Indianola
Republican

**11th Senatorial District—Clarke
and Warren Counties**

Born on a farm in Monroe county, September 19, 1894. Moved to Warren county with parents in 1902, lived on same farm 49 years. Attended rural schools and Simpson college. Married Margaret Glascock, January 16, 1918; has two daughters, Irene (Mrs. Kenneth B. Kramer), Vinton, Iowa, Kathryn (Mrs. Eugene A. Braught), Weslaco, Texas, and son Robert E. Bellman, Gladstone, Illinois. Owner and operator of dairy farm. Long an advocate of crop rotation, soil conservation and good farming practice. Host to all Iowa Soil Conservation field day in 1947. Member of Methodist church; Farm Bureau; Warren county fair board; treasurer of school board; director Des Moines Co-operative Dairy; director and vice president Central Iowa Production Credit Association; director and vice president Warren County Oil Company; Master Farmer 1946; Mason; Eastern Star; Consistory; Shrine and Rotary Club. Serving first term.



BELLMAN, G. D. (Don), Indianola

Republican

**11th Senatorial District—Clarke
and Warren Counties**

Born on a farm in Monroe County, September 19, 1894. Moved to Warren County with parents in 1902, lived on same farm 49 years. Attended rural schools and Simpson College. Married Margaret Glascock, January 16, 1918; have two daughters, Irene (Mrs. Kenneth B. Kramer), Vinton, Iowa, Kathryn (Mrs. Eugene A. Braught), Weslaco, Texas, and son, Robert E. Bellman. Owner of dairy farm, operating in partnership with his son. Long an advocate of crop rotation, soil conservation and good farming practice. Host to all Iowa Soil Conservation field day in 1947. Member of Methodist Church; Farm Bureau; Warren County Fair Board; treasurer of school board; director Des Moines Co-operative Dairy; director and vice-president Central Iowa Production Credit Association; director and vice-president Warren County Oil Company; Master Farmer 1946; Mason; Eastern Star; Consistory; Shrine and Rotary Club. Serving first term.