

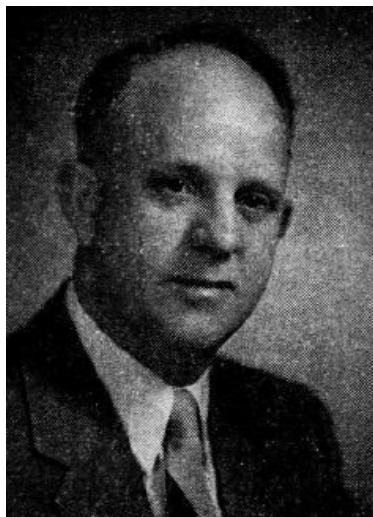


**WORMLEY, Jack M., Newton**

Republican

**20th Senatorial District—Jasper County**

Born on a farm near Newton, Iowa, August 11, 1914. Attended rural schools, Newton high school and Iowa State College. Started farming and in 1940 became manager of the Maytag farms at Newton, Iowa. Farm owner in Jasper county. Married former Chloressa Dew of Kirksville, Missouri, and has two children, Karen 12, and Jon 8. Member of First Presbyterian church. Former president of the following organizations: Jasper county rural youth group, Jasper county farm bureau and Newton Kiwanis club. Former member of Newton Junior Chamber of Commerce and present member of Newton Chamber of Commerce. One of the earliest cooperators in soil conservation work. Served as county chairman of U.S.O. drive and united defense fund. Serving first term in Senate.



**WORMLEY, Jack M., Newton**  
Republican

**27th Senatorial District—Jasper County**

Born on a farm near Newton, Iowa, August 11, 1914. Attended rural schools, Newton high school and Iowa State college. Started farming and in 1940 became manager of the Maytag farms at Newton, Iowa. Farm owner in Jasper county. Married former Chloressa Dew of Kirksville, Missouri, and has two children, Karen 10, and Jon, 6. Member of First Presbyterian church. Former president of the following organizations: Jasper county rural youth group, Jasper county farm bureau and Newton Kiwanis club. Former member of Newton Junior Chamber of Commerce and present member of Newton Chamber of Commerce. One of earliest cooperators in soil conservation work. Served as county chairman of U.S.O. drive and united defense fund. Treasurer of Jasper county Republican central committee several years. Serving first term in Senate.