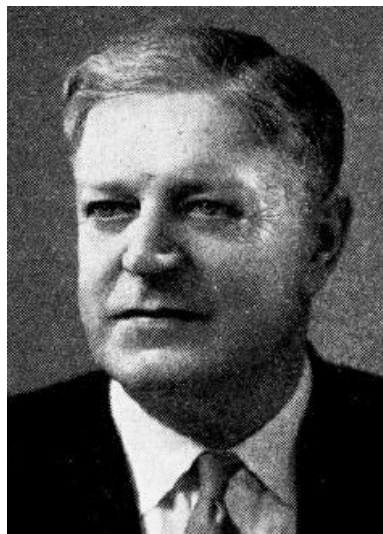


WATSON, Harry E., Sanborn
Republican
**47th Senatorial District—O'Brien, Clay
and Dickinson Counties**

Born June 27, 1906, on a farm near Archer, Iowa, in O'Brien county, a son of George and Erma Watson. Attended the Archer consolidated school; graduated in 1924. Married Eibie Hanefield of Sanborn, Iowa, December 31, 1928. Father of five daughters: Mary Glee, home economist at Sibley, Iowa; Mrs. Bernis Maye Thompson, who attended Kahler school of nursing in Rochester, Minnesota; Carole Jeane, a freshman at Iowa State Teachers College in Cedar Falls; LaVonne Raye, in junior high; and Laura Lee, in the 4th grade. Presbyterian, Eastern Star, Masons, Consistory and Abu Bekr Shrine. Land owner and operator. Served in House of Representatives in the 51st, 52nd and 52nd Extra General Assemblies. Elected to the Senate in 1948 and served there in the 53rd, 54th, 55th, 56th and 57th General Assemblies.





**WATSON, Harry E., Sanborn Republican
47th Senatorial District—O'Brien, Clay and
Dickinson Counties**

Born June 27, 1906, on a farm near Archer, Iowa, in O'Brien county, a son of George and Erma Watson. Attended the Archer consolidated school; graduated in 1924. Married Elbie Hanefield of Sanborn, Iowa, December 31, 1926. Father of five daughters: Mary Glee, graduate of Iowa State college, now teaching at Alta, Iowa; Bernis Maye, who attended Kahler School of Nursing in Rochester, Minn., now Mrs. Allen Thompson of Minneapolis, Minn.; Carole Jeane, a junior in high school; LaVonne Raye, in the 5th grade, and Laura Lea, in the 2nd grade. Presbyterian, Eastern Star, Masons, Consistory and Abu Bekr Shrine. Land owner and operator. Served in House of Representatives in the 51st and 52nd General Assemblies. Elected to the Senate in 1948. Served in Senate in 53rd, 54th, 55th and 56th General Assemblies.



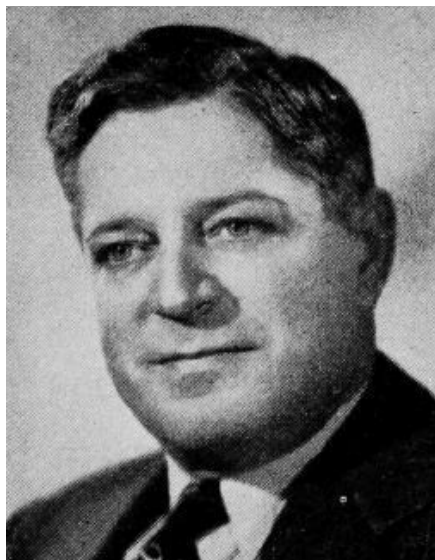
**WATSON, Harry E., Sanborn Republican
47th Senatorial District—O'Brien, Clay
and Dickinson Counties**

Born June 27, 1906, on a farm near Archer, Iowa, in O'Brien county, a son of George and Erma Watson. Attended the Archer consolidated school and was graduated with the class of 1924. Started farming in 1926 while staying at home. Married Elbie Hanefield of Sanborn, Iowa, on December 31, 1928. Moved to farm near Sanborn March 1, 1930. Father of five daughters, Mary Glee 21, Bernis Maye 18, Carole Jeane 15, LaVonne Reye nine and Laura Lea six. Member of the Presbyterian church. Also member of the Eastern Star, Masons, Consistory and Abu Bekr Shrine. Land owner and operator. Served in House of Representatives in 51st and 52nd General Assemblies. Elected to the Senate in 1948. Served in Senate in 53rd, 54th and 55th General Assemblies.



WATSON, Harry E., Sanborn Republican
47th Senatorial District—O'Brien, Clay
and Dickinson Counties

Born June 27, 1906, on a farm near Archer, Iowa, in O'Brien county, a son of George and Erma Watson. Attended the Archer consolidated school and was graduated with the class of 1924. Started farming in 1926 while staying at home. Married Elbie Hanefield of Sanburn, Iowa, on December 31, 1928. Moved to farm near Sanborn March 1, 1930. Father of five daughters, Mary Glee 19, Bernis Maye 16, Carole Jeane 13, LaVonne Reye, seven and Laura Lea, four. Member of the Presbyterian church. Also member of the Eastern Star, Masons, Consistory and Abu Bekr Shrine. Land owner and operator. Practices modern methods of mechanical farming. Served in House of Representatives in 51st and 52nd General Assemblies. Elected to the Senate in 1948. Served in Senate in 53rd and 54th General Assemblies.



**WATSON, Harry E., Sanborn Republican
47th Senatorial District—O'Brien, Clay and
Dickinson Counties**

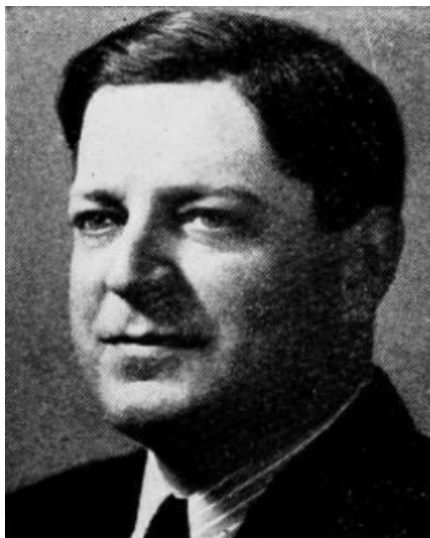
Born June 27, 1906, on a farm near Archer, Iowa, in O'Brien county, son of George and Erma Watson. Attended the Archer consolidated school and was graduated with the class of 1924. Started farming in 1926 while staying at home. Married Elbie Hanefield of Sanborn, Iowa, December 31, 1928. Moved to farm near Sanborn, March 1, 1930. Father of five daughters, Mary Glee 17, Bernis Maye, 14, Carole Jeane, 11, LaVonne Reye, five and Laura Lea, two. Member of the Presbyterian Church. Also member of the Eastern Star, Masons, Consistory and Abu Bekr Shrine. Land owner and operator. Practices modern methods of mechanical farming. Served in House of Representatives in 51st and 52nd General Assemblies. Elected to the Senate in 1948.



WATSON, Harry E., Sanborn
O'Brien County

Republican

Born June 27, 1906, on a farm near Archer, Iowa, in O'Brien county, son of George and Erma Watson. Attended the Archer consolidated school and was graduated with the class of 1924. Started farming in 1926 while staying at home. Married Elbie Hanefeld of Sanborn, Iowa, December 31, 1928. Moved to farm near Sanborn, March 1, 1930. Father of four daughters, Mary Glee, 14, Bernis Maye, 11, Carol Jeane, eight, and LaVonne Reye, three. Member of the Presbyterian church. Also member of the Eastern Star, Masons, Consistory and Abu Bekr Shrine. Land owner and operator. Practices modern methods of mechanical farming. Serving second term.



**WATSON, Harry E., Sanborn O'Brien County
Republican**

Born June 27, 1906, on a farm near Archer, Iowa, in O'Brien county, son of George and Erma Watson. Attended the Archer Consolidated School and was graduated with the class of 1924. Started farming in 1936 while staying at home. Married Elbie Hanefeld of Sanborn, Ia., December 31, 1928. Moved to farm near Sanborn, Ia., March 1, 1930. Father of 4 daughters, Mary Glee, 12, Bernis Maye, 9, Carol Jeane, 6, and LaVonne Raye, 1. Member of the Masons and Eastern Star. Land owner and operator. Practices modern methods of mechanical farming. Serving first term.