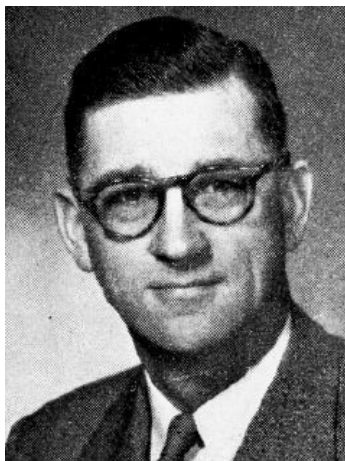


**MOLISON, Wilbur C., Grinnell**  
Republican  
**12th Senatorial District—Keokuk and  
Poweshiek Counties**

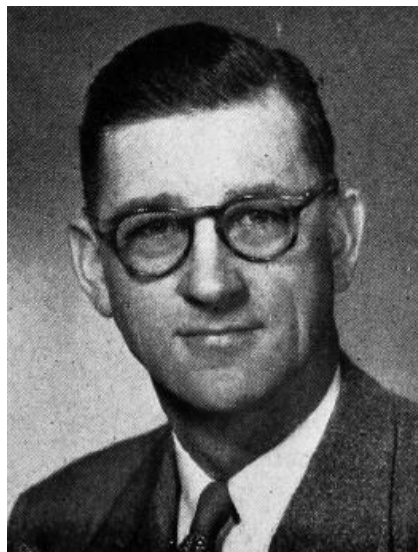
Born at Malcom, Iowa, Poweshiek county, on December 20, 1902, son of William and Elizabeth Molison. Attended rural schools and graduated from Malcom high school in 1919 and from Iowa State College in 1924, receiving B.S. degree in animal husbandry. Worked as county extension agent in Washington county 1925-1927. Married Miriam McLain of Brooklyn, Iowa, July 6, 1927. Father of three children; Mary (Mrs. Grant A. Finley) of Fort Belvoir, Va.; Mac, an employee of the extension service in Hardin county, Iowa; Robert, a senior at Oberlin College, Oberlin, Ohio. Engaged in farming since 1928. Owns and operates farms near Grinnell and Malcom, Iowa. Director of Grinnell State bank. Member of Congregational church, Masonic orders, Kiwanis club, and Farm Bureau. Trustee of committee for agricultural development. Director Community Grinnell hospital, Poweshiek county Board Education; member state and county Farm Bureau office. Serving last session of second term in Senate.





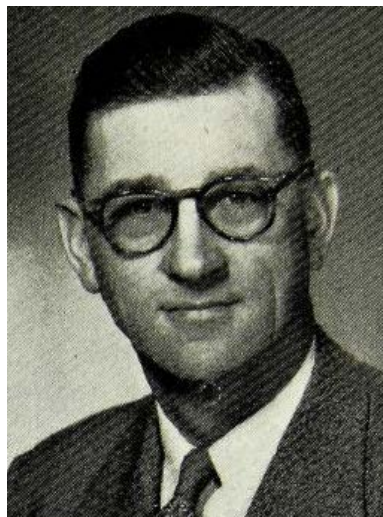
**MOLISON, Wilbur C., Grinnell Republican  
12th Senatorial District—Keokuk and  
Poweshiek Counties**

Born Malcom, Iowa, Poweshiek county, on December 20, 1902, son of William and Elizabeth Molison. Attended rural schools and graduated from Malcom high school in 1919 and from Iowa State college in 1924, receiving B.S. degree in animal husbandry. Worked as county extension agent in Washington county 1925-1927. Married Miriam McLain of Brooklyn, Iowa, July 6, 1927. Father of three children, Mac, an employee of extension service in Hardin county; Robert, a sophomore at Oberlin college, Oberlin, Ohio; Mary, a junior at Iowa State college. Engaged in farming since 1928. Owns and operates farm near Grinnell. Director of Grinnell State bank. Member of Congregational church, Masonic orders, Kiwanis club, and Farm Bureau. Trustee of committee for agricultural development. Has served on board of directors of Community hospital of Grinnell, has held county and state Farm Bureau offices, and was a member of Poweshiek county board of education from 1948 to 1950. Serving second term in Senate.



**MOLISON, Wilbur C., Grinnell Republican  
12th Senatorial District—Keokuk and  
Poweshiek Counties**

Born Malcom, Iowa, Poweshiek County, on December 20, 1902, son of William and Elizabeth Molison. Attended rural schools and graduated from Malcom High School in 1919 and from Iowa State College in 1924, receiving B. S. degree in animal husbandry. Worked as county extension agent in Washington County 1925-1927. Married Miriam McLain of Brooklyn, Iowa, July 6, 1927. Father of three children—Mac, a junior at Iowa State College; Mary, a freshman at Iowa State College; and Robert, a senior at Grinnell High School. Engaged in farming since 1928. Owns and operates farm near Grinnell. Director of Grinnell State Bank. Member of Congregational Church, Masons, Des Moines Conistory, Kiwanis Club and Farm Bureau. Has served on board of directors of Community Hospital of Grinnell, has held county and state Farm Bureau offices, and was a member of Poweshiek County Board of Education from 1948 to 1950. Serving first term in Senate.



**MOLISON, Wilbur C., Grinnell Republican  
12th Senatorial District—Keokuk and  
Poweshiek Counties**

Born Malcom, Iowa, Poweshiek county, on December 20, 1902, son of William and Elizabeth Molison. Attended rural schools and graduated from Malcom high school in 1919 and from Iowa State College in 1924, receiving B.S. degree in animal husbandry. Worked as county extension agent in Washington County 1925-1927. Married Miriam McLain of Brooklyn, Iowa, July 6, 1927. Father of three children—Mac, student at Iowa State College, and Mary and Robert, students at Grinnell high school. Engaged in farming since 1928. Owns and operates farm near Grinnell. Member of Congregational church, Masons, Izaak Walton League, Farm Bureau, and Theta Delta Chi social fraternity. Has served on board of directors of Community Hospital of Grinnell, has held county and state Farm Bureau offices, and was a member of Poweshiek county Board of Education from 1948 to 1950. Elected to Senate in November, 1950.