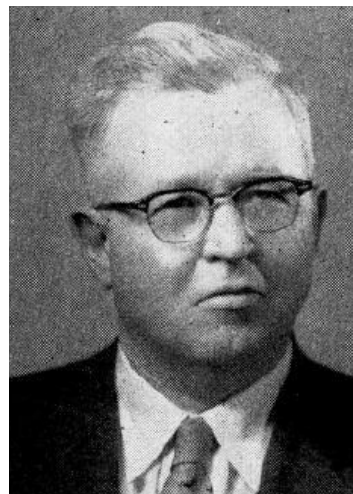


**CHAMBERS, Earl L., Gilmore City
Pocahontas County
Democrat**

Born December 10, 1899, near Traer, Iowa. Graduated from Rolfe high school in 1916 and Coe college, Cedar Rapids, Iowa, in 1921. Taught in schools at Ruthven, Ayrshire, Rolfe and Pocahontas for six years. Engaged in farming in 1929. Married Pearl B. Sandvig of Ruthven, Iowa in 1925. Has four children, Mrs. Isabelle Flanigan of Riverside, California, Mrs. Frances Measom of Azusa, California; Elwood, a student at Iowa State College and Garland, Fort Dodge, Iowa. Member of Methodist church, Masonic lodge and American Legion. Former member of school board, township clerk and executive board of American Legion. Veteran of World War I. Serving second term.





**CHAMBERS, Earl L., Gilmore City
Pocahontas County
Democrat**

Born December 10, 1899, near Traer, Iowa. Graduated from Rolfe high school in 1916 and Coe college, Cedar Rapids, Iowa, in 1921. Taught in schools at Ruthven, Ayrshire, Rolfe and Pocahontas for six years. Engaged in farming in 1929. Married Pearl B. Sandvig of Ruthven, Iowa in 1925. Has four children, Mrs. Isabelle Flanigan of Riverside, California, Mrs. Frances Measom of Philipsburg, Montana; Elwood, a student at Iowa State college and Garland, now serving in the army and stationed in Chicago. Member of Methodist church, Masonic lodge, Farm Bureau and American Legion. Former member of school board, township clerk and executive board of American Legion. Veteran of World War I. Serving first term.